

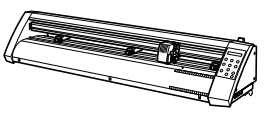
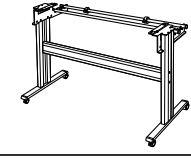

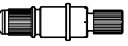

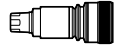



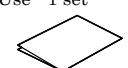
CE5000 SERIES SETUP MANUAL

This Setup Manual describes the procedures required for setup. For operation procedures and details on how to make the settings, and for any other points that are not clear, please refer to the "CE5000 User's Manual" PDF files that are included in the CD-ROM provided with the CE5000 plotter.

* Windows and Windows XP are registered trademark of Microsoft Corporation in USA and other countries.
* Adobe Acrobat is a trademark of Adobe Systems Incorporated.

1. Check the content

1. Check the content
2. Following accessories are attached to the plotter. Refer to the list and check the accessories.

<input type="checkbox"/> Plotter · 1 unit 	<input type="checkbox"/> Stand · 1 assembly 
<input type="checkbox"/> Power cable/USB cable · 1 of each 	<input type="checkbox"/> Cutter plunger · 1 set 
<input type="checkbox"/> Cutter Blade (CB09UA) · 1 set 	<input type="checkbox"/> Water based fiber pen · 1 set 
<input type="checkbox"/> User guide CD-ROM · 1 set 	<input type="checkbox"/> Media Cutter · 1 set 
<input type="checkbox"/> Setup Manual (this manual) · 1 set 	<input type="checkbox"/> Note on Use · 1 set 

2. Prepare the connection cable

Note : The RS-232C cable is an option.

Connect the plotter to PC with one of the following cables.

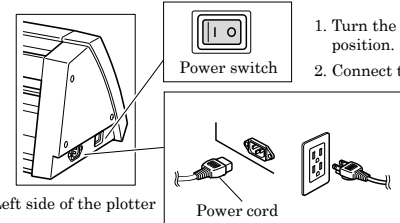
- RS-232C (Serial port)
- USB cable

Select the cable according to the specification of the application software or the availability of the communication port on your PC. Use Graphtec recommended cable for reliable operation.

If you plan to use the ROBO Master-Pro software and the Cutting Plotter Controller, use the USB cable to connect the plotter to your computer.

3. Connect the power source

Note : Remove all transportation tapes.



1. Turn the power switch to "O" position.
2. Connect the power cord.

4. Install the software

Note: This manual explains the case of Windows XP. When you install the software, you need to have computer administrator's rights.

Note: If you are using Macintosh, read "readme" file in the English folder of attached CD-ROM.

A-1 Launch Windows, then insert the User guide CD-ROM into the CD-ROM drive of the PC.



Note : At this stage, do not connect the plotter to the PC.

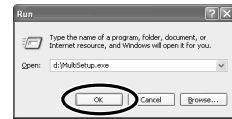
A-2 A little later, the start window is displayed. Press "Install CE5000" button to install the software and driver.



The installed software

- Print & Cut Software (ROBO Master Pro) Cutting Plotter Controller Plotter Driver
- Illustrator Plug-in(Cutting Master)
- Acrobat Reader

Note : If it is not displayed, press START menu of the Windows, then select the Run.
Select [CD-ROM]: \MultiSetup.exe and press OK button.



Note: If you are using the Windows95/98/Me, press START menu, the select the Run. Then select [CD-ROM]: \English\Drive\NSETUP.exe and press the OK button. In case of the Windows95/98/Me, it is compatible with the CE5000 driver, so skip to the section D-1.

A-3 Follow the installation wizard.

Note : If "Software License Agreement" is displayed, check the description. If you agree to the License agreement, press the Yes button.

Install CE5000 Software

A-4 If you press "Install CE5000 Software" button, the following window is displayed.



Confirm the setup items, then press the OK button.

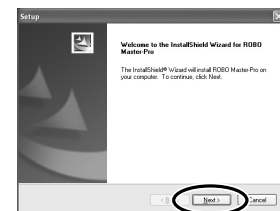
Print and Cut software (ROBO Master Pro)

Install the Print and Cut software (ROBO Master Pro) according to the instruction on the screen.

Note : The ROBO Master Pro works only when installed to Windows 2000/XP using the USB interface.

Note: The ROBO Master Pro is an application software which has easy-to-use drawing function and has a function to output to the CE5000 and printers.

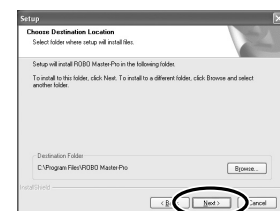
B-1. Press the Next button.



B-2. Press the Yes button.



B-3. Press the Next button.



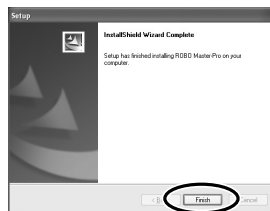
B-4. Press the Next button.



B-5. Press the Next button.



B-6. Press the Finish button.



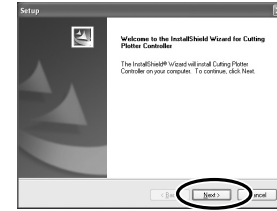
Cutting Plotter Controller

Install the Cutting Plotter Controller according to the instruction on the screen.

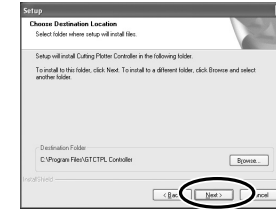
Note : The Cutting Plotter controller works only when installed to Windows 2000/XP using the USB interface.

The Cutting Plotter Controller is a software which enables to control major functions of the CE5000 from PC.

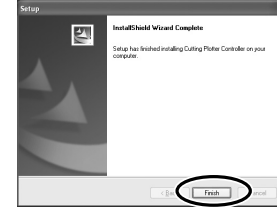
C-1. Press the Next button.



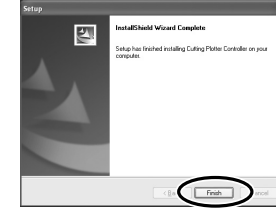
C-2. Press the Next button.



C-3. Press the Next button.



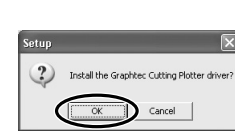
C-4. Press the Finish button.



Plotter Driver

Install the driver software according to the instructions on the screen.

D-1. Press the OK button.



D-2. Confirm that the CE5000 is not connected with the PC, then press the OK button.



D-3. Press the OK button.



D-4. Select the port then press the OK button.

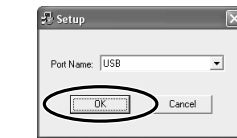
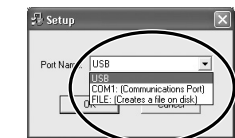
USB: Select it when using the USB cable.

COM1: Select it when using the RS-232C (Serial) cable.

FILE: Select it when plot data is output to a file.

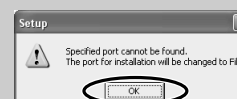
Note: Note: USB connection is not guaranteed for computers running Windows 98 SE.

Please use the RS-232C (serial) connection instead.



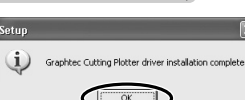
D-5. Press "Continue anyway" button.

If specified port isn't available on the PC, the following window is displayed and the destination port is changed to "File".

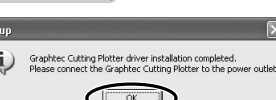


D-6. Press the OK button.

In case of COM1 and FILE connection,



In case of USB connection,



To install Illustrator plug-in go to step A-5, otherwise go to step A-6.

In case of USB connection,

Note : E-2 and E-4 may not be displayed on certain computers.

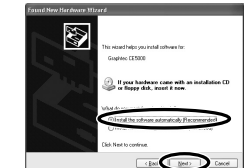
E-1. Connect the CE5000 and the PC using the USB cable, then power on the CE5000.



E-2. Select "No, not this time", then press the Next button.



E-3. Select "Install the software automatically (Recommended)" then press the Next button.



E-4. Press the Next button. Install the item which is selected as a default.



E-5. Press "Continue Anyway" button. E-6. Press the Finish button.



To install Illustrator plug-in go to step A-5, otherwise go to step A-6.

Setup Illustrator Plug-in

Note : If you use the Illustrator 8 or 9 for Macintosh, please read "Plug in for Illustrator.pdf".

A-5 Press "Setup Illustrator Plug-in" button on the Start window. (Refer to A-2 and A-3)

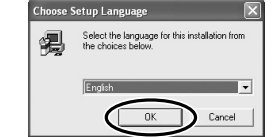
F-1. Press the English Version button.



F-2. Press the OK button.

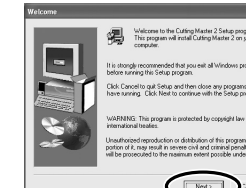


F-4. Select the language that you wish to use and then press the OK button.

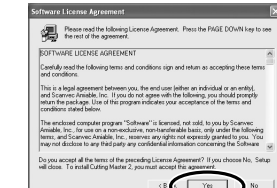


F-3. Follow the instructions displayed on the screen and then press the Next button.

F-5. Press the Next button.

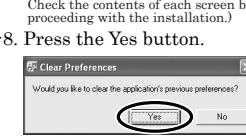


F-6. Press the Yes button.



F-7. Follow the instructions displayed on the screen and then press the Yes button. (The screens that are displayed may differ according to the operating system. Check the contents of each screen before proceeding with the installation.)

F-8. Press the Yes button.



F-9. Press the Finish button.



A-6 Install Acrobat Reader

A-7 Press the Exit button.

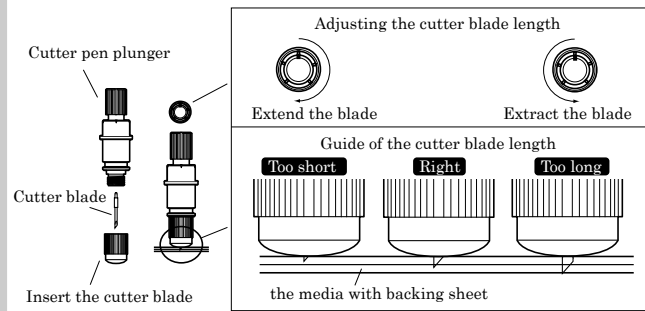
The Acrobat Reader is necessary to read attached users manual. If the Acrobat Reader is not installed in your PC, press "Acrobat Reader" to install it.



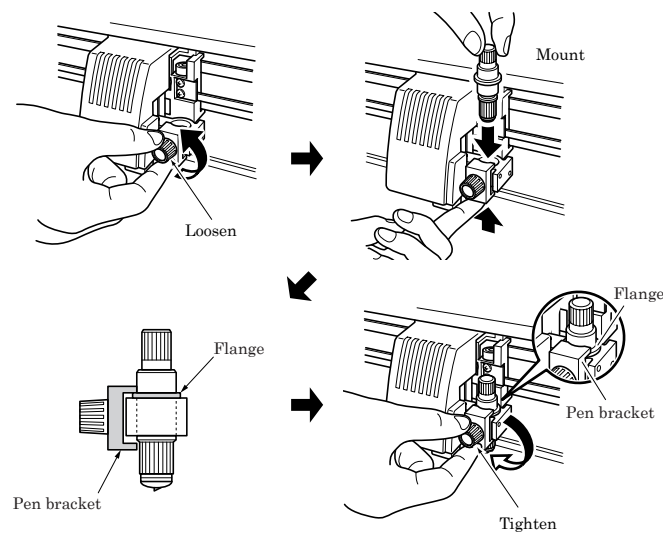
CE5000 SERIES OPERATION MANUAL

Caution
To avoid bodily injury, always handle the cutter blade with caution.

1 Preparing the cutter blade and the cutter pen plunger

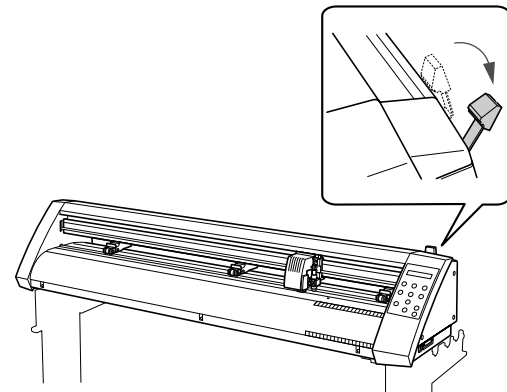


2 Mounting the cutter pen plunger

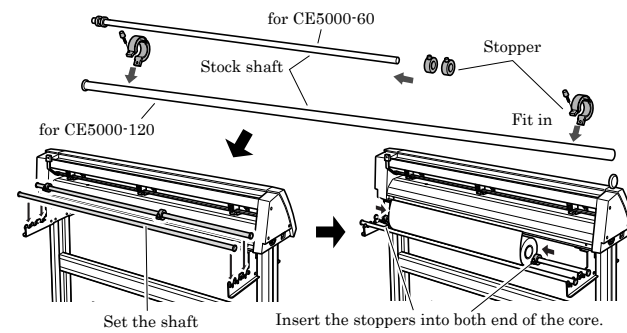


3 Loading the media

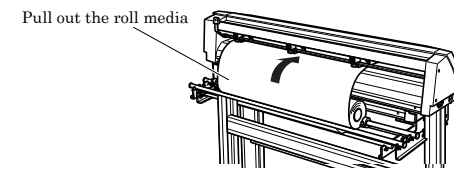
1. Lower the set lever



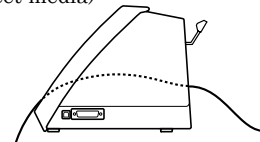
2. Setting the roll media stand



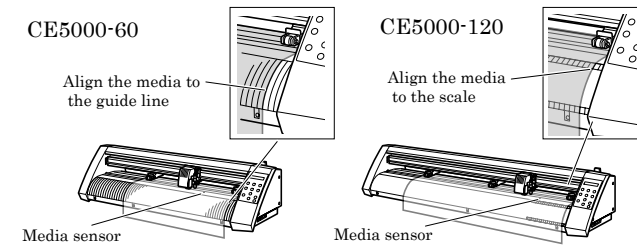
3-1. Pull out the roll media and pass through the CE5000 (in case of roll media)



3-2. Pass the sheet media through the CE5000 (in case of sheet media)

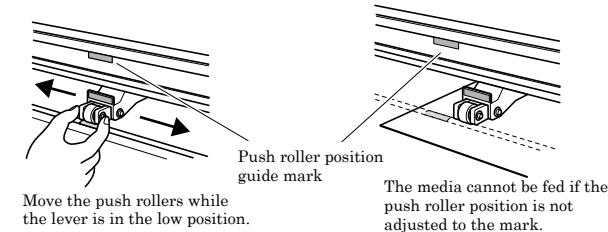


4. Align the media with the CE5000

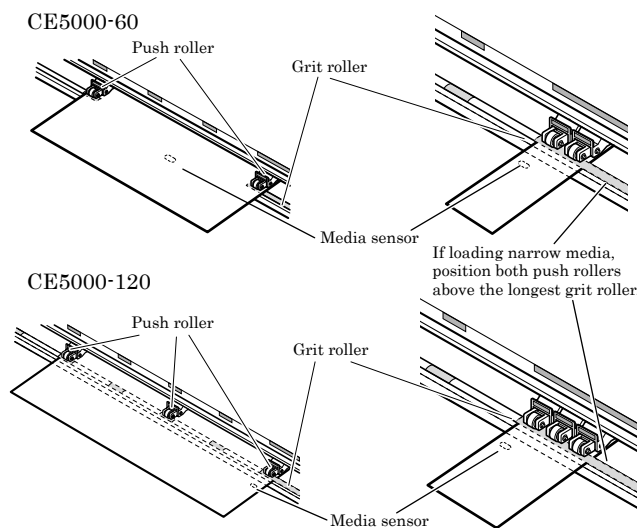


5. Adjust the push roller position

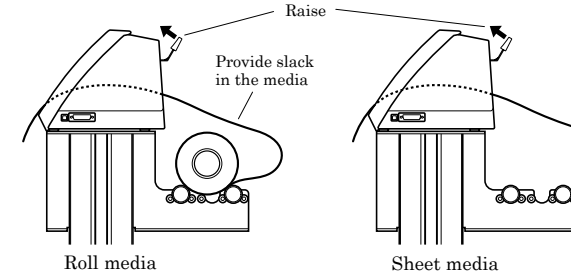
Adjust the position of the push rollers to the push roller position guide mark



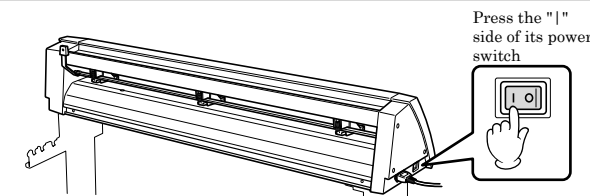
Make sure to position the media so it covers the media sensor.



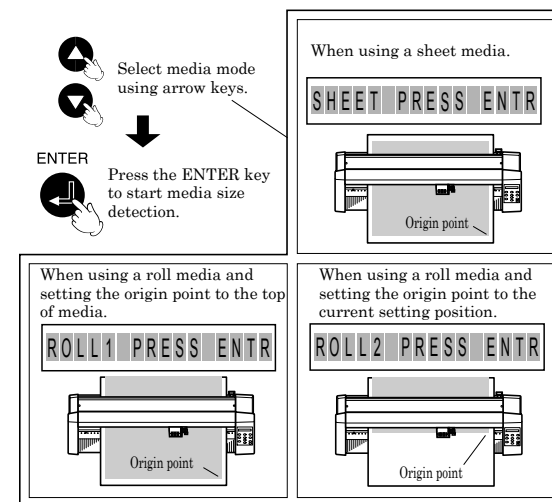
6. Adjusting the media



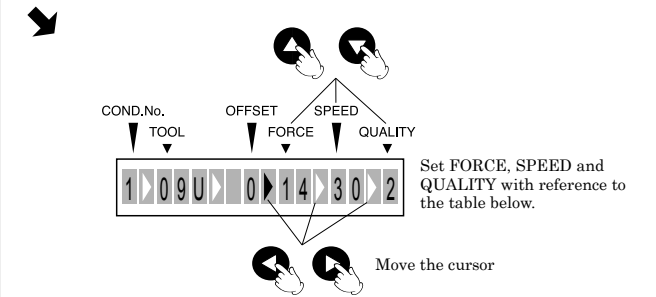
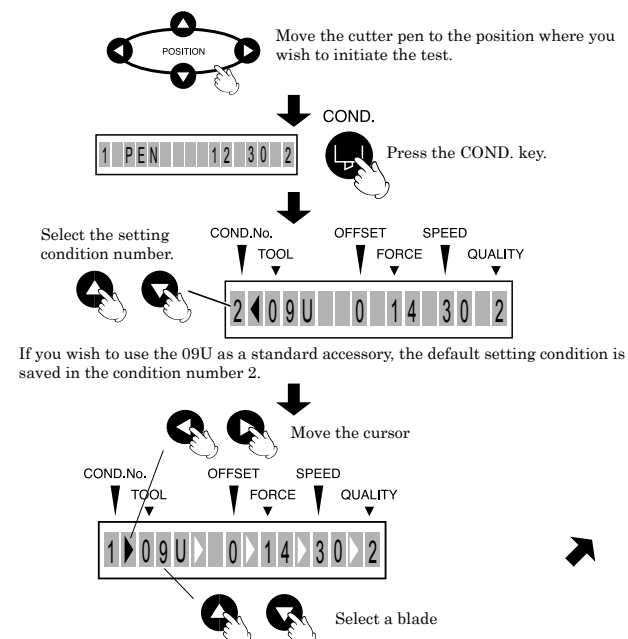
4 Turn on the cutting plotter



5 Select the media mode



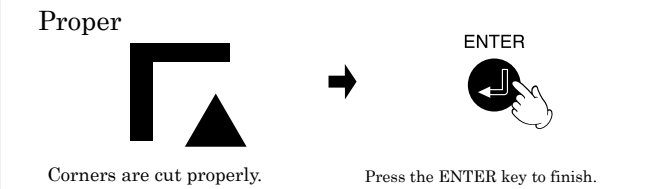
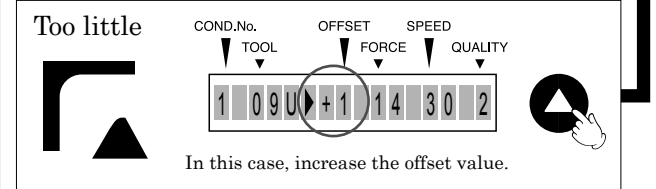
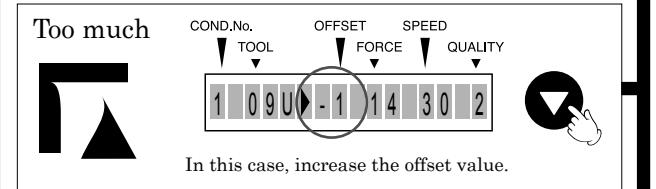
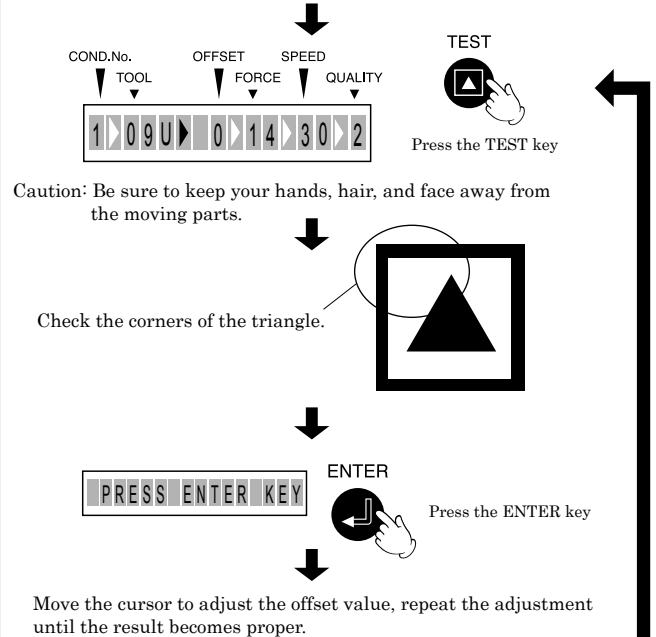
6 Setting the cutting conditions



A rough guide of the setting

Material	Thickness(mm)	Blade	Cutting force	Speed	Quality
Outdoor vinyl	0.05 to 0.08	CB09UA	10-14	1-30	2
1 (for small size character cutting)	0.05 to 0.08	CB15UB	10-14	1-20	1
Film for decoration	0.08 to 0.1	CB09UA	14-17	1-30	2
Transparent/translucent film	0.08 to 0.1	CB09UA	14-20	1-30	2
Reflection film	0.08 to 0.1	CB09UA	14-20	1-30	2
Fluorescent film	0.20 to 0.25	CB09UA	20-21	1-20	1
Fluorescent film	0.20 to 0.25	CB15U	20-21	1-20	1

Adjust the cutting force so that the cutting trace lightly appears on the media liner.



If the ENTER key is pressed, then the setting conditions are stored into the memory.