

# CE7000-AKZ

## SPECIALTY CUTTER FOR AFTERMARKET AUTOMOTIVE STYLING

The CE7000-130 AKZ cutter has been specifically designed for the aftermarket automotive industry.

Modified for the streamlined cutting of window tint film, paint protection film, paint masking pinstriping & graphics, a heavy duty precision servo motor delivers accurate cutting speeds of up to 39 inches per second with an unsurpassed 15 feet of tracking.

### FEATURES

- 450 Grams of Downforce
- 39 inch per-second Cutting Speed
- Precise Loupe for Easy Blade Adjustment
- Open Software Platform
- Ethernet Connectivity
- Thumb Drive Port



*High Performance Cutting for  
Window Tint & Paint Protection Film*

**WINDOW TINT • PROTECTION FILM • PAINT MASKING • VINYL LETTERING / GRAPHICS**

### ACCESSORIES

Accessories for the CE7000-130AKZ include an anti-static string kit for front and rear which reduces the static electricity common with PPF and tint films which can restrict media movement.

#### EACH UNIT INCLUDES:

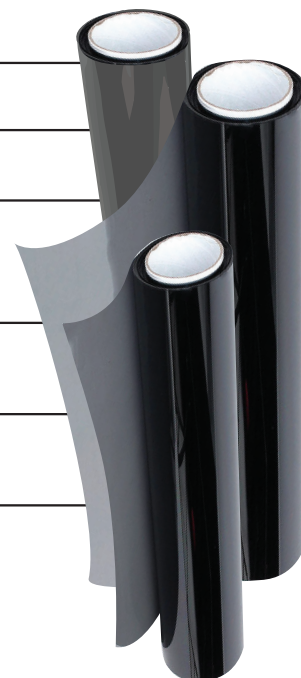
- Standard Media Roll Rack
- Specialty Tint Blade
- Heavy Duty Stand
- Anti-Static Kit
- Dual Media Catch Basket  
*designed for dust-free  
continuous tracking and/or  
repetitive job operations.*



# CE7000-AKZ

## Specifications for Cutting Window Tint and Paint Protection Media

| ITEM                        | CE7000-130AKZ   |
|-----------------------------|---|
| Maximum Cutting Area        | 50 in x 164 ft<br>(762 mm x 50 m)   |
| Compatible Media Widths     | 2 in to 53 in<br>(50 mm to 919 mm)  |
| Maximum Media Thickness     | 59.1 mil<br>(1.48 mm)   |
| Maximum Cut Speed           | 39 in/s (990 mm/s)<br>at 45° diagonal   |
| Programmable Cutting Force  | Max. 4.41N (450gf) in 38 steps  |
| Number of Push Rollers      | 4 Push Rollers  |
| Programmable Resolution     | GP-GL™: 0.1/.05/.025/.01mm; HP-GL®: 0.001 in (0.025mm);<br>GP-GL™: 254, 508, 1016, 2540; HP-GL®: 1016   |
| Command Modes               | GP-GL™, HP-GL® (Selectable in command menu or auto detection)   |
| Configuration               | Grit roller with digital servo drive system   |
| Interface                   | USB 2.0 High-speed / Serial RS-232C / Ethernet interface  |
| Display Panel               | 3.7" Graphic type LCD with back-light (240dpi x 128dpi)   |
| Compatible Media Types      | Self-adhesive Vinyl Film, Amberlith™, Rubylith™,<br>Sandblast Resist Rubber, Window Tint Film,<br>Paint Protection Film, Automotive Paint Protection Film |
| Shipping Weight with Basket | 121 lbs (54.9 kg)   |
| Unit Dimensions with Basket | 67" x 45.2" x 48"   |
| Warranty                    | 2 Years Standard Warranty for Parts & Labor<br>5 Year Extended Warranty option available within 90 days   |



For more information please contact: [cp.sales@graphtecamerica.com](mailto:cp.sales@graphtecamerica.com)