

# Graphtec Pro Studio Graphtec Pro Studio Plus Cutting Master 4

---

## Operation Manual

### **Precautions**

Graphtec Pro Studio / Graphtec Pro Studio Plus / Cutting Master 4 (hereinafter referred to as "software")

- All rights related to this software are the property of the SA International, Inc. (hereinafter referred to as "SAI, Inc.").
- To use this software, you must perform the user registration to SAI's SAI Cloud.
- To use this software, you must agree to the license agreement with the SAI.
- The activation code of Graphtec Pro Studio / Graphtec Pro Studio Plus is the right that one user can use the software with one computer.
- E-mail address for user registration is required.
- The computer that you want to install this software must be connected to the Internet.

However, although Graphtec Pro Studio / Graphtec Pro Studio Plus can be installed to a computer that is not connected to the Internet by performing the "4-1 When starting the Graphtec Pro Studio on a computer that is not connected to the Internet" procedure, a computer that is connected to the Internet is required separately.

- The screens used in this manual may differ from the actual screen. In addition, the screens and function names that have been provided is subject to change without notice.
- Please log in to the computer using the account with the administrative right.
- For the latest supported OS, please check our website.

## ● Setup Flow

### Setup of Graphtec Pro Studio

**User registration to SAi Cloud**  
[1-1 User registration to "SAi Cloud"]



**Install Graphtec Pro Studio**  
[1-2 Installing "Graphtec Pro Studio"]

### Setup of Cutting Master 4

**Install Cutting Master 4**  
[2-1 Installing "Cutting Master 4" (Windows)]  
[2-2 Installing "Cutting Master 4" (Macintosh)]



**User registration to SAi Cloud Connect**  
[2-3 User registration to "SAi Cloud Connect"]

### Setup of Graphtec Pro Studio Plus

**Upgrade to Graphtec Pro Studio Plus**  
[3-1 User registration to "SAi Cloud"]  
[3-2 Installing "Graphtec Pro Studio Plus"]

## ● Contents

### 1. Setup of Graphtec Pro Studio

1-1	User registration to "SAi Cloud" .....	6
1-2	Installing "Graphtec Pro Studio" .....	9

### 2. Setup of Cutting Master4

2-1	Installing "Cutting Master 4" (Windows) .....	12
2-2	Installing "Cutting Master 4" (Macintosh) .....	14
2-3	User registration to "SAi Cloud Connect" .....	16

### 3. Upgrade to Graphtec Pro Studio Plus

3-1	User registration to "SAi Cloud" .....	20
3-2	Installing "Graphtec Pro Studio Plus" .....	20

### 4. When Getting Help

4-1	When starting the Graphtec Pro Studio on a computer that is not connected to the Internet .....	24
4-2	When uninstalling the Graphtec Pro Studio from a computer that has not been connected to the Internet .....	28
4-3	When forgetting the password of "SAi Cloud" .....	31
4-4	When forgetting the password of "SAi Cloud Connect" .....	33
4-5	When updating the registration information of SAI account .....	35
4-6	When changing the Email for login .....	37
4-7	When changing the password for login .....	39
4-8	When moving the activation code of Graphtec Pro Studio to the other computer .....	40
4-9	When the computer in which the Graphtec Pro Studio has been installed is broken down .....	42



# ***1. Setup of Graphtec Pro Studio***

## **Product Summary**

1-1 User registration to "SAi Cloud"

1-2 Installing "Graphtec Pro Studio"

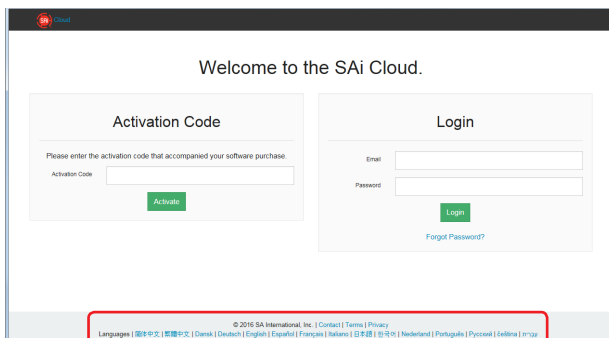
# 1. Setup of Graphtec Pro Studio

## 1-1 User registration to "SAi Cloud"

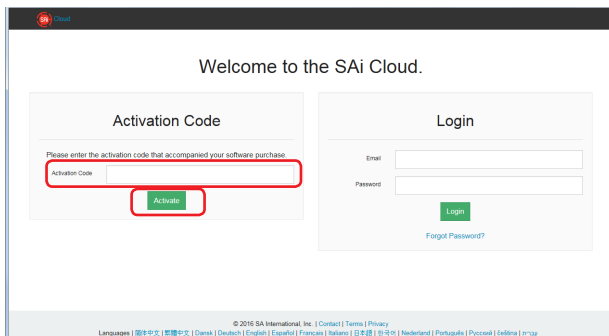
Perform the user registration to "SAi Cloud".

To install the Graphtec Pro Studio, you must perform the user registration to SAI's SAi Cloud and then enable the activation code of Graphtec Pro Studio.

1. Start the browser from the computer, enter "www.saicloud.com" in the address bar, and then press [Enter] key.
2. The following screen is displayed.  
You can change the display language by selecting the language at the bottom of the screen.



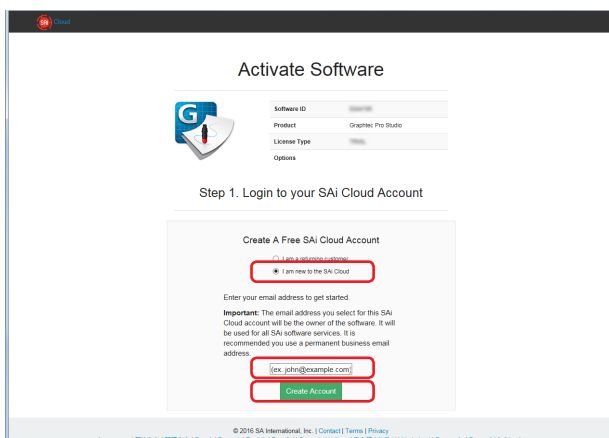
3. Enter the activation code of Graphtec Pro Studio in the "Activation Code" item.  
Click on the [Activate] button after entering it.



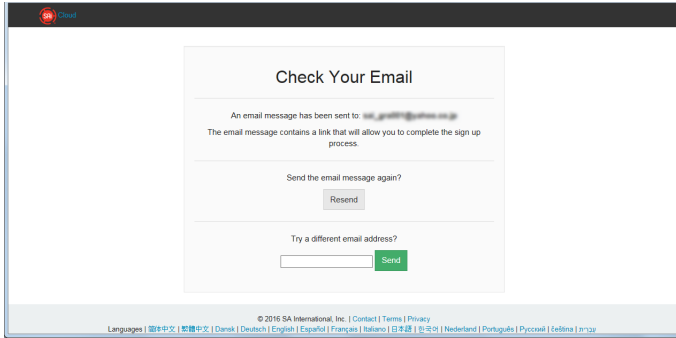
4. Select the "I am new to the SAi Cloud".  
Enter the Email address for the product registration.  
Click on the [Create Account] button after entering it.

\* When you already acquired the SAi account, select the "Account has been registered".

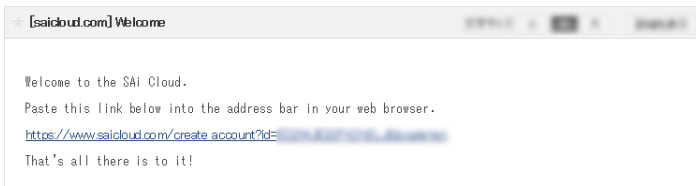
Enter the "Email" and "Password" and then click on the [Login] button.  
Go to Step 9.



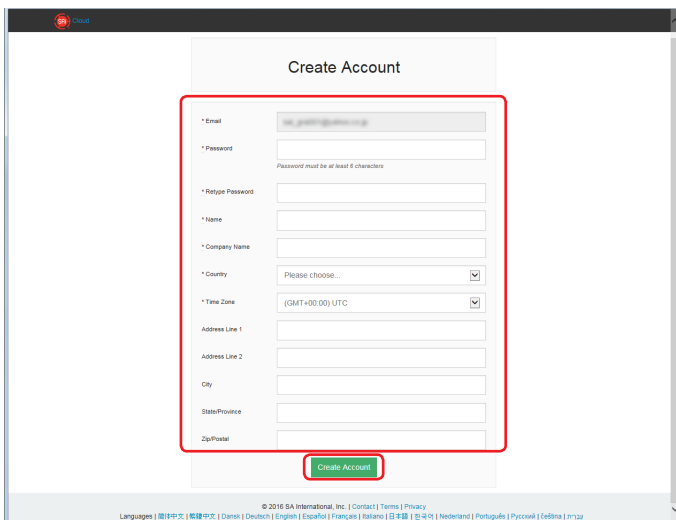
5. This screen switches to the screen asking for the confirmation of received Email.



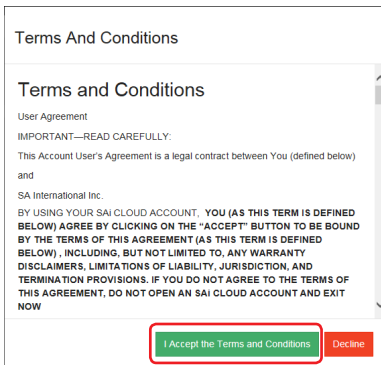
6. Open the Email sent to the specified Email address and then access to the provided URL.



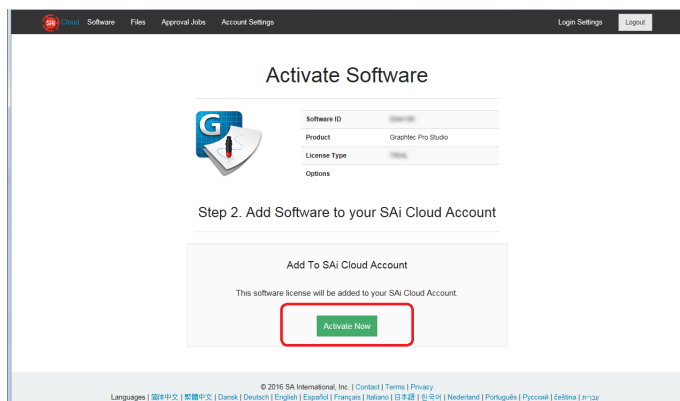
7. Enter the necessary information. The " \* " indicates the mandatory field. Click on the [Create Account] button after entering them.



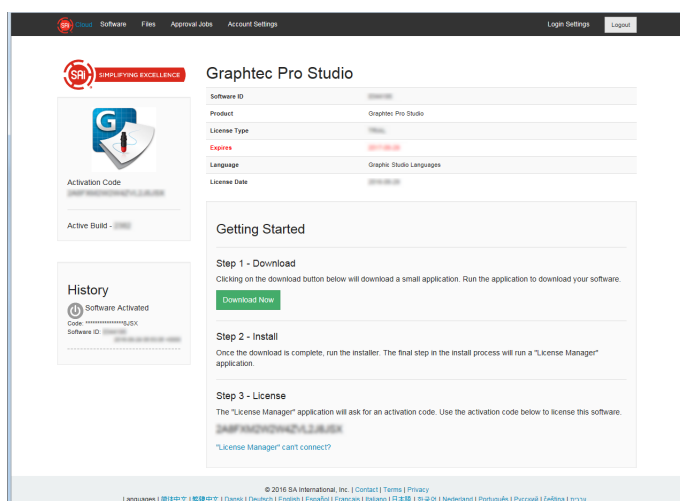
8. Click on the [I Accept the Terms and Conditions] button.



9. Click on the [Activate Now] button.



10. Operation of the activation of is complete.



Now, the user registration to "SAI Cloud" is complete.



## 1-2 Installing "Graphtec Pro Studio"

Install the Graphtec Pro Studio.

You must enable the activation code before installing it.

If the activation code has not been enabled, install it after performing the (1-1 User registration to "SAi Cloud") in (P6)

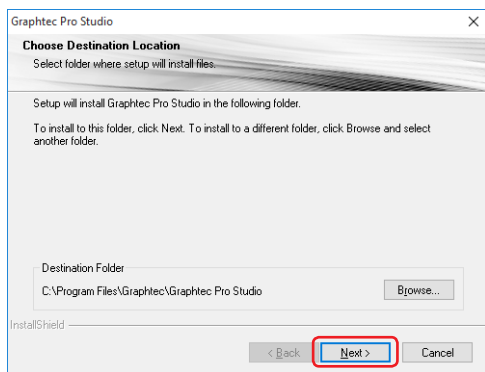
1. Insert the "USER GUIDE & SOFTWARE DVD" supplied with the product into the DVD driver of the computer. Click on the [Setup Graphtec Pro Studio] button from "Start" screen.

Install it in accordance with the wizard from here. The following procedure has been described selectively.

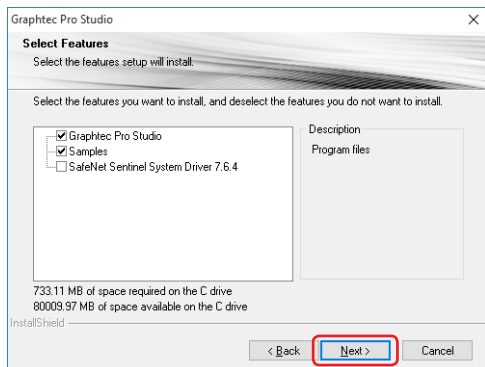
- \* When downloaded from our Web site, double-click on the "Autorun.exe".
- \* Click on the "Step 1-Download"- "Download now" displayed in Step 10 of the (1-1 User registration to "SAi Cloud") (P6) and then download the "SAi\_Software\_Download.exe". You can download the Graphtec Pro Studio by executing the downloaded "SAi\_Software\_Download.exe". Even if you downloaded it in this way, double-click on the "Autorun.exe".



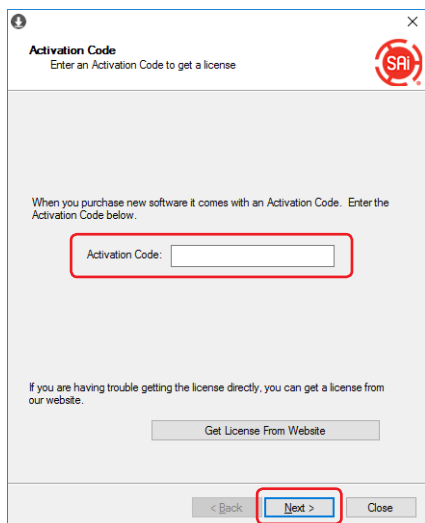
2. Click on the [Browse] button when you want to change the destination folder. Click on the [Next] button.



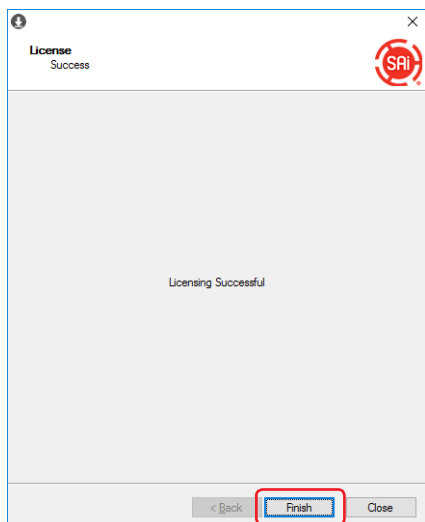
3. Leave the initial values for the check boxes. Click on the [Next] button.



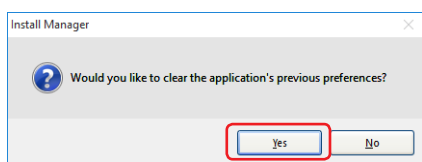
4. The screen to enter the activation code is displayed at the end of the installation.  
Enter the activation code that is entered in Step 3 of the (1-1 User Registration to "SAi Cloud") (P6) in the "Activation Code" item.  
Click on the [Next] button.



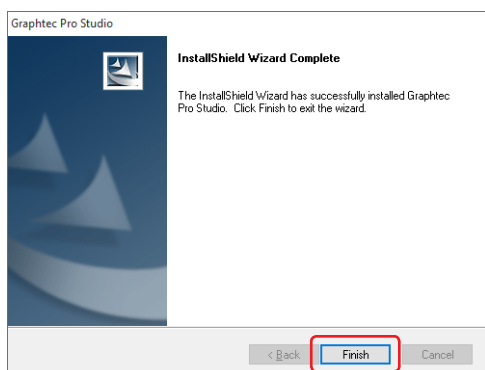
5. Click on the [Finish] button.



6. When the following screen is displayed, click on [Yes] button.



7. Click on the [Finish] button.



Now, the installation of Graphtec Pro Studio is complete.

## ***2. Setup of Cutting Master4***

### **Product Summary**

- 2-1 Installing "Cutting Master 4" (Windows)
- 2-2 Installing "Cutting Master 4" (Macintosh)
- 2-3 User registration to "SAi Cloud Connect"

## 2. Setup of Cutting Master4

### 2-1 Installing "Cutting Master 4" (Windows)

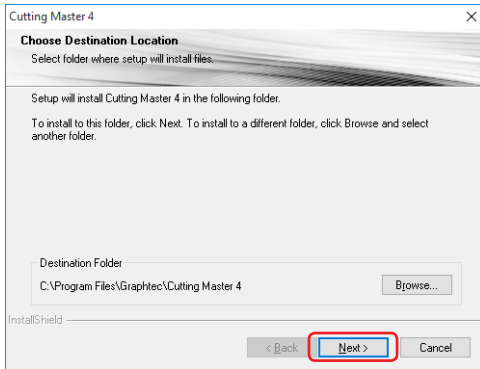
Install the Cutting Master 4.

After the installation is complete, perform the users registration to "SAi Cloud Connect".

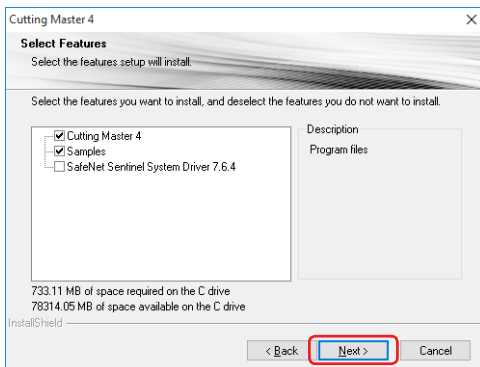
1. Insert the "USER GUIDE & SOFTWARE DVD" supplied with the product into the DVD driver of the computer. Click on the [Setup Cutting Master 4] button from "Start" screen. Install it in accordance with the wizard from here. The following procedure has been described selectively.  
\* When downloaded from our Web site, double-click on the "Autorun.exe".



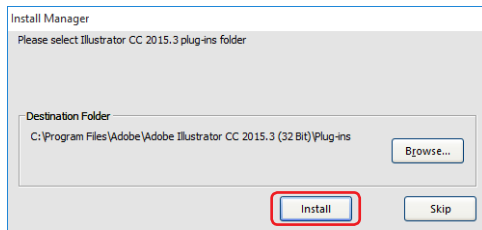
2. Click on the [Browse] button when you want to change the destination folder. Click on the [Next] button.



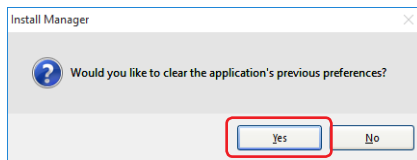
3. Leave the initial values for the check boxes. Click on the [Next] button.



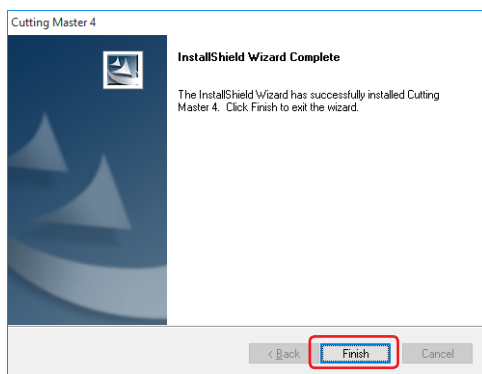
4. Click on the [Install] button.



5. When the following screen is displayed, click on [Yes] button.



6. Click on the [Finish] button.



7. Restart the computer.

Now, the installation of Cutting Master 4 is complete.

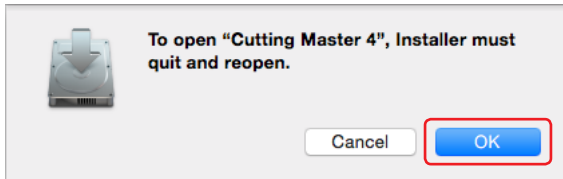
Continuously, perform the (2-3 User registration to "SAi Cloud Connect") (P16).

## 2-2 Installing "Cutting Master 4" (Macintosh)

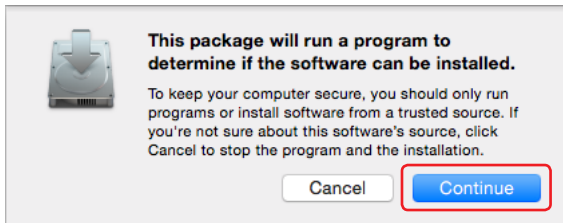
Install the Cutting Master 4.

After the installation is complete, perform the user registration to "SAi Cloud Connect".

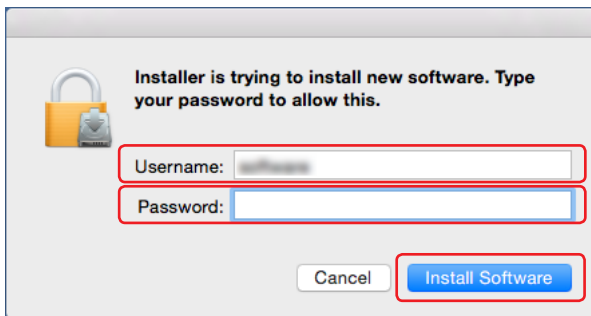
1. Insert the "USER GUIDE & SOFTWARE DVD" supplied with the product into the DVD driver of the computer.
2. Open "Cutting Master 4" folder in the DVD and double-click on the "Cutting Master 4\_signed.pkg" file. Install it in accordance with the wizard from here.  
\* When downloaded from our Web site, double-click on the "Cutting Master 4\_signed.pkg".
3. The following screen may be displayed. Click on the [OK] button.



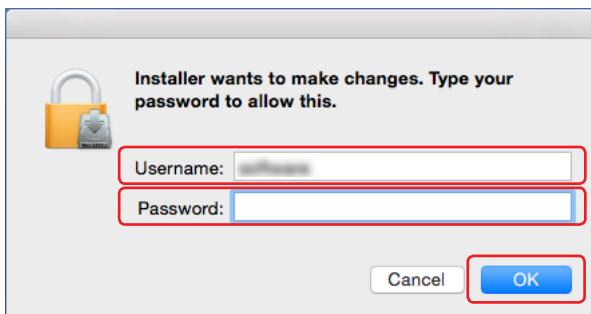
4. Click on the [Continue] button.



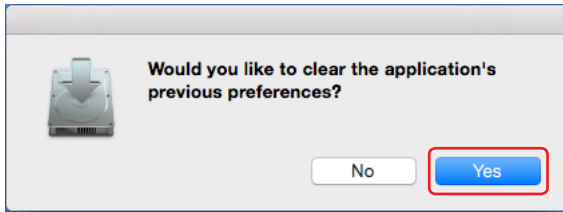
5. Enter the "User name" with the administrative right and "Password" and then click on the [Install Software] button.



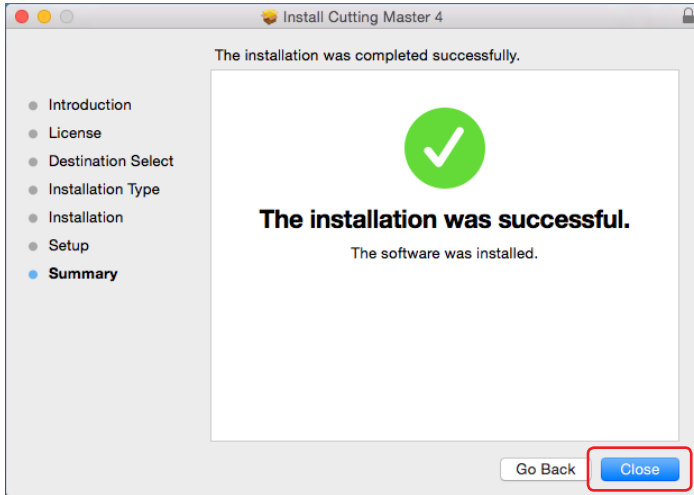
6. Enter the "User name" with the administrative right and "Password" and then click on the [OK] button.



7. When the following screen is displayed, click on [Yes] button.



8. Click on the [Close] button.



9. Restart the computer.

Now, the installation of Cutting Master 4 is complete.

Continuously, perform the (2-3 User registration to "SAi Cloud Connect") (P16).

## 2-3 User registration to "SAi Cloud Connect"

Perform the user registration to "SAi Cloud Connect".

To use the Cutting Master 4, you must perform the user registration.

### 1. Start the "SAi Cloud Connect".

When using Window machine, click on the "SAi Cloud Connect" icon from the "Task Manager".



When using Macintosh machine, click on the "SAi Cloud Connect" icon from the menu bar.



### 2. "SAi Cloud Connect" screen is displayed.

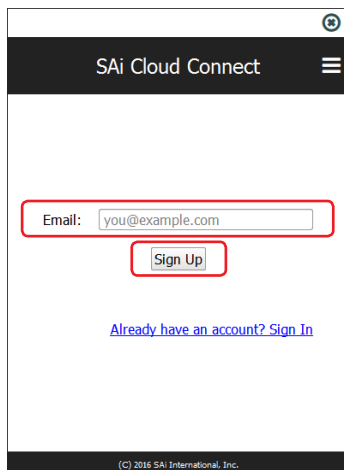
Click on the "Need an account? Sign Up" item.

\* When you have already acquired the SAi account, enter the "Email" and "Password" and then click on the [Sign In] button. Go to Step 10.



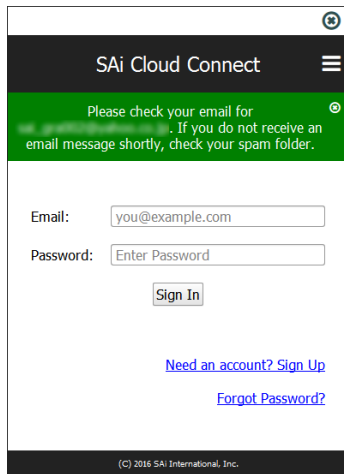
### 3. Enter the Email address for the product registration in the "Email" item.

Click on the [Sign Up] button after entering it.

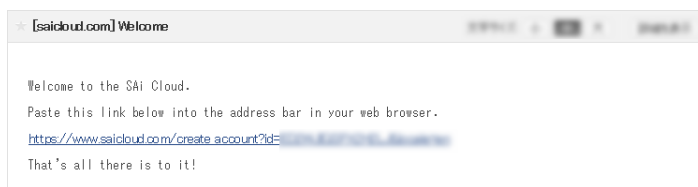




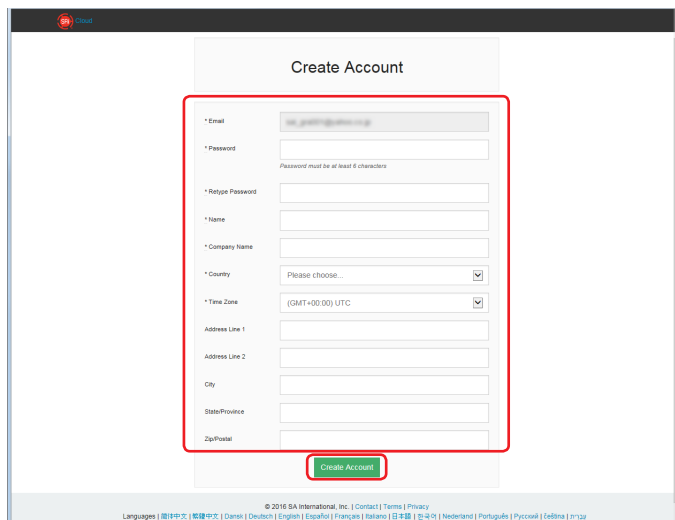
- This screen switches to the screen asking for the confirmation of received Email.



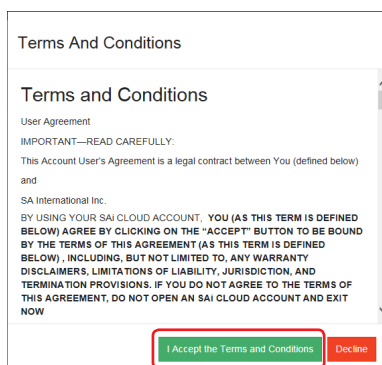
- Open the Email sent to the specified Email address and then access to the provided URL.



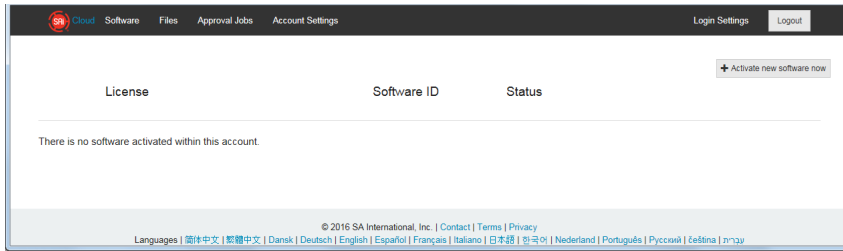
- Enter the necessary information. The "\*" indicates the mandatory field. Click on the [Create Account] button after entering them.



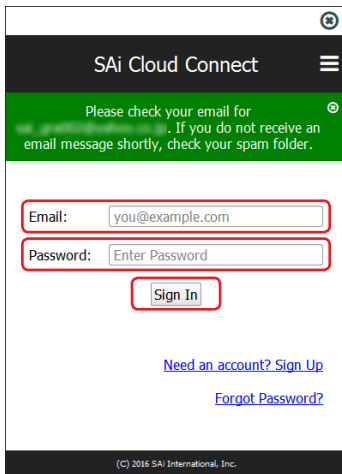
- Click on the [I Accept the Terms and Conditions] button.



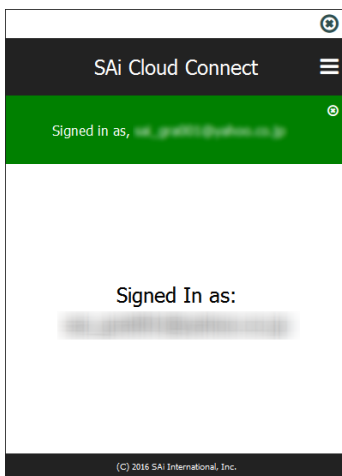
8. The following screen is displayed.



9. Enter the registered "Email" and "Password" and then click on the "Sign In" button.



10. The screen indicating that it is in the sign-in is displayed.



Now, the user registration to "SAI Cloud" is complete.

## ***3. Upgrade to Graphtec Pro Studio Plus***

---

### **Product Summary**

3-1 User registration to "SAi Cloud"

3-2 Installing "Graphtec Pro Studio Plus"

## 3. Upgrade to Graphtec Pro Studio Plus

Perform the user registration to "SAi Cloud".

To install the Graphtec Pro Studio Plus, you must perform the user registration and then enable the activation code of Graphtec Pro Studio Plus after purchasing.

### 3-1 User registration to "SAi Cloud"

1. Perform the user registration, referring the (1-1 User registration to "SAi Cloud") (P6).

### 3-2 Installing "Graphtec Pro Studio Plus"

Install the Graphtec Pro Studio Plus.

You must enable the activation code before installing it.

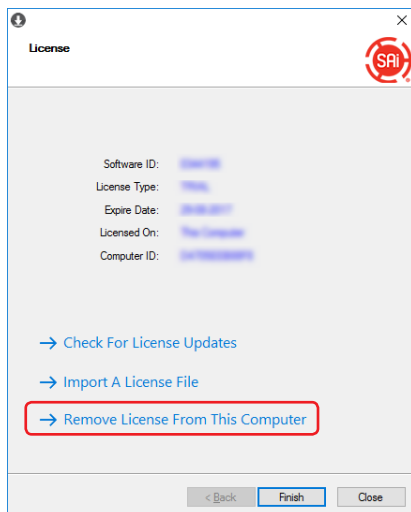
If the activation code has not been activated, install it after performing the (3-1 User registration to "SAi Cloud") in (P20).

1. Start the "License Manager" from the computer to release the activation of Graphtec Pro Studio.

\* Supplement: Select the "Start"-"All Programs"-"Graphtec Pro Studio"-"License Manager".

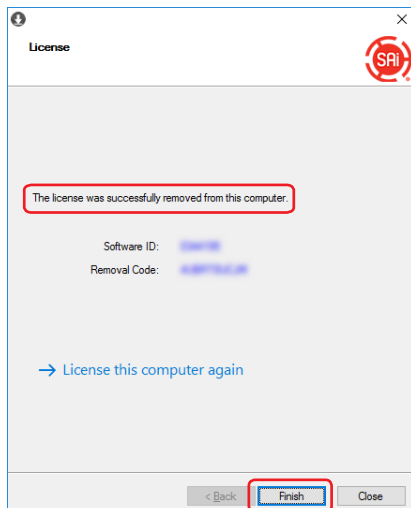
The "User Account Control" screen is displayed. Click on the [Yes] button.

2. Click on the "Remove License From This Computer" item.

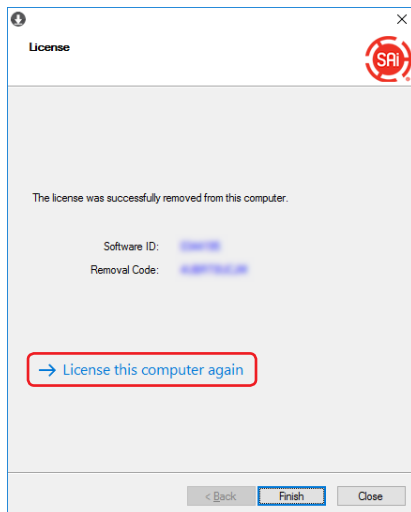


3. "The license was successfully removed from this computer" is displayed.

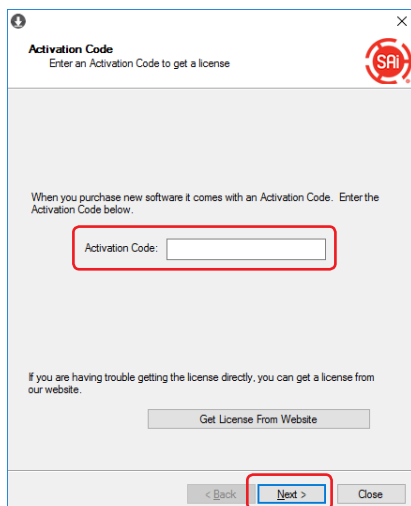
Click on the [Finish] button.



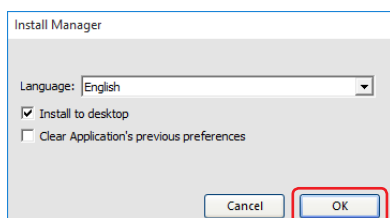
4. Start the "License Manager" again.
5. Click on the "License this computer again" item.



6. Enter the activation code for Graphtec Pro Studio Plus in the "Activation Code" item.  
Enter the activation code that is entered in Step 3 of the (1-1 User Registration to "SAi Cloud") (P6) in "Activation Code" item.  
Click on the [Next] button.



7. Start the "Install Manager".  
Click on the [OK] button.  
\* Supplement: Select the "Start"->"All Programs"->"Graphtec Pro Studio"->"Install Manager".



8. The "Graphtec Pro Studio Plus x.x" and "Graphtec Pro Studio Plus Production Manager x.x" icons are displayed on the desktop.
9. Delete "Graphtec Pro Studio x.x" and "Graphtec Pro Studio Production Manager x.x" icons on the desktop, and then delete "Graphtec Pro Studio Plus x.x" and "Graphtec Pro Studio Plus Production Manager x.x" icons in the start menu, because they are unnecessary.

Now, the upgrade to Graphtec Pro Studio Plus is complete.



## **4. When Getting Help**

### **Product Summary**

- 4-1 When starting the Graphtec Pro Studio on a computer that is not connected to the Internet
- 4-2 When uninstalling the Graphtec Pro Studio from a computer that has not been connected to the Internet
- 4-3 When forgetting the password of "SAi Cloud"
- 4-4 When forgetting the password of "SAi Cloud Connect"
- 4-5 When updating the registration information of SAi account
- 4-6 When changing the Email for login
- 4-7 When changing the password for login
- 4-8 When moving the activation code of Graphtec Pro Studio to the other computer
- 4-9 When the computer in which the Graphtec Pro Studio has been installed is broken down

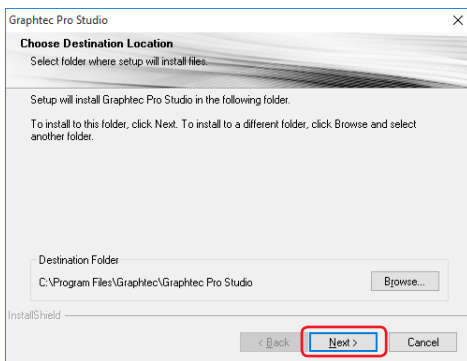
# 4. When Getting Help

## 4-1 When starting the Graphtec Pro Studio on a computer that is not connected to the Internet

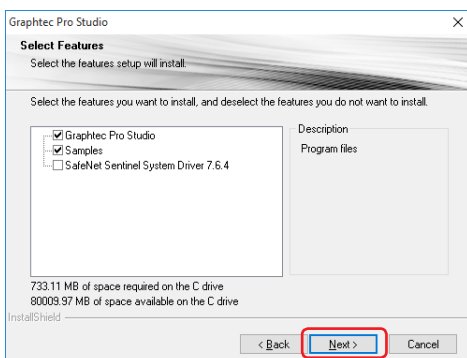
1. Perform the user registration on a computer that is connected to the Internet.  
Refer to the (1-1 User registration to "SAi Cloud") (P6).  
\* Just leave the state that Step 10 is displayed, without closing the browser. Set later. Set in the Step 7 of this procedure.
2. Insert the "USER GUIDE & SOFTWARE DVD" supplied with the product into the DVD driver of the computer to install the Graphtec Pro Studio.  
Click on the [Setup Graphtec Pro Studio] button from "Start" screen.  
Install it in accordance with the wizard from here.  
\* When downloaded from GTC's Web site, double-click on the "Autorun.exe".  
\* Click on the "Step 1-Download"->"Download now" displayed in Step 10 of the (1-1 User registration to "Sai Cloud") (P6) and then download the "SAi\_Software\_Download.exe".  
You can download the Graphtec Pro Studio by executing the downloaded "SAi\_Software\_Download.exe".  
Even if you downloaded it in this way, double-click on the "Autorun.exe".



3. Click on the [Browse] button when you want to change the destination folder.  
Click on the [Next] button.

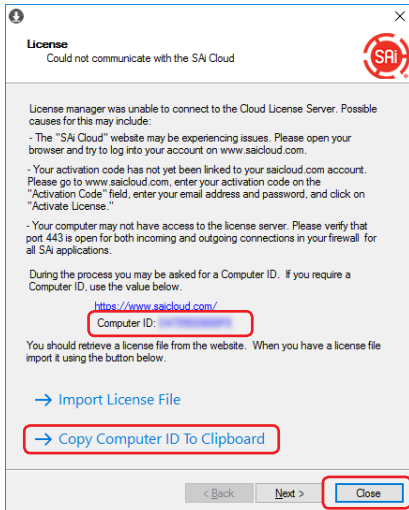


4. Leave the initial values for the check boxes.  
Click on the [Next] button.

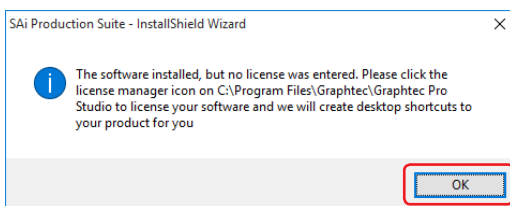




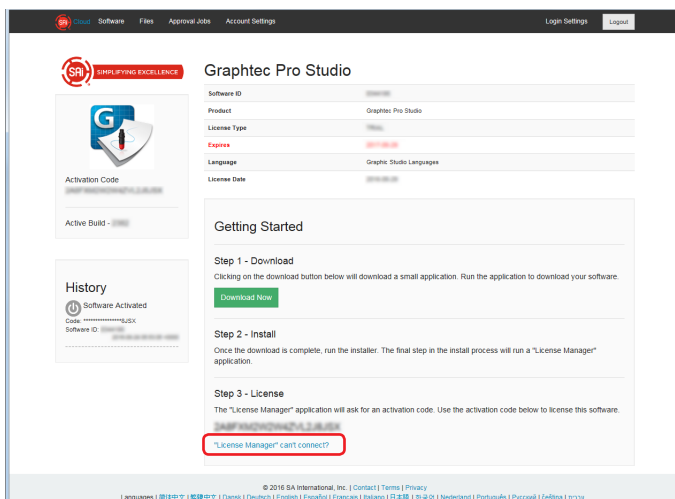
5. The screen to enter the activation code is displayed at the end of the installation. Make a note so as not to forget the ID that is displayed in the "Computer ID" item. Or, click on the [Copy Computer ID to Clipboard] item and open the Notepad and then paste the computer ID on it. Save this data file in the memory device such as a USB memory device. Click on the [Close] button.



6. The following "Information" screen is displayed. Click on the [OK] button.

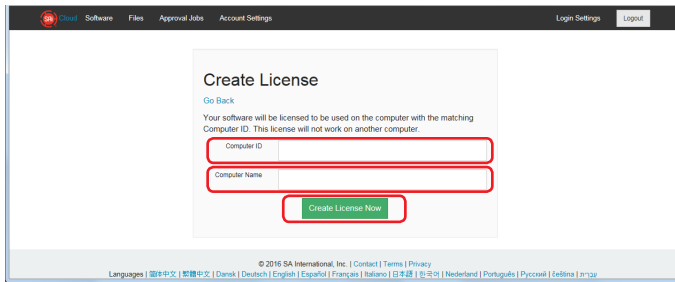


7. Return to the computer that has been connected to the Internet. Click on the [License Manager can't connect?] item.

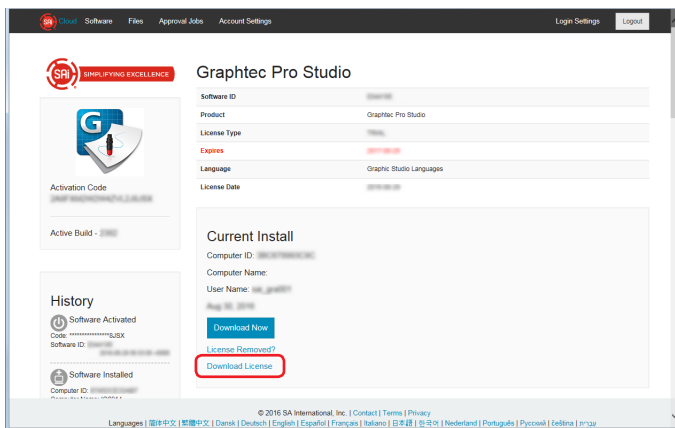


## 4. When Getting Help

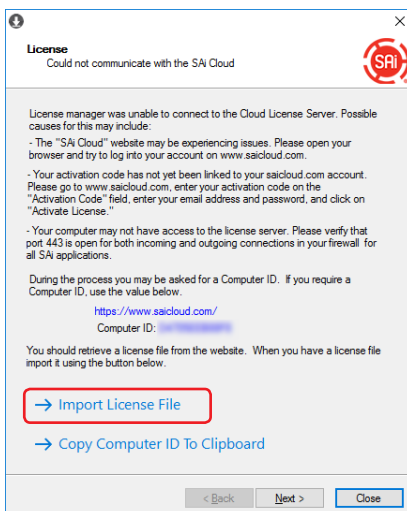
8. Enter the computer ID noted in Step 5 in the "Computer ID" item.  
The Computer Name item is left blank.  
Click on the "Create License Now" button.



9. Click on the "Download Now" item.

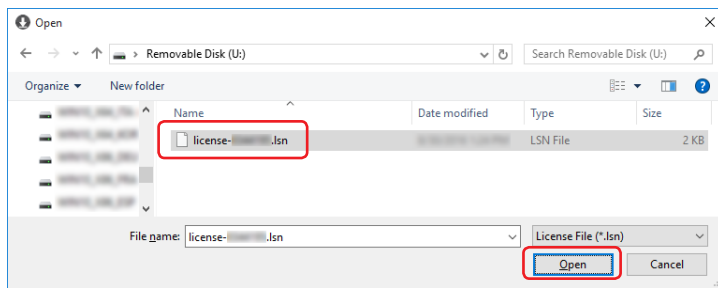


10. The screen to select a location to save the file is displayed. Save it to the USB memory device.  
\* The file to be saved is "license-xxxxxxx.lsn". The "xxxxxxx" is numerical value.
11. Connect a USB memory device used in Step 10 to the computer to install the Graphtec Pro Studio.
12. Start "License Manager".  
\* Supplement: Select the "Start"-"All Programs"-"Graphtec Pro Studio"-"License Manager".  
The "User Account Control" screen is displayed. Click on the [Yes] button.
13. Click on the "Import License File" item.



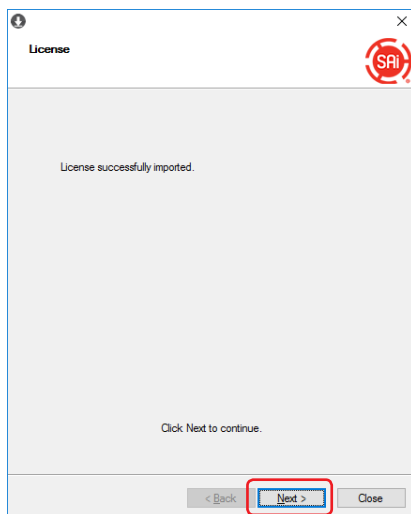
14. The screen to select the file is displayed.

Select the "license-xxxxxxx.lsn" file in the USB memory device connected in Step 11.  
Click on the [Open] button

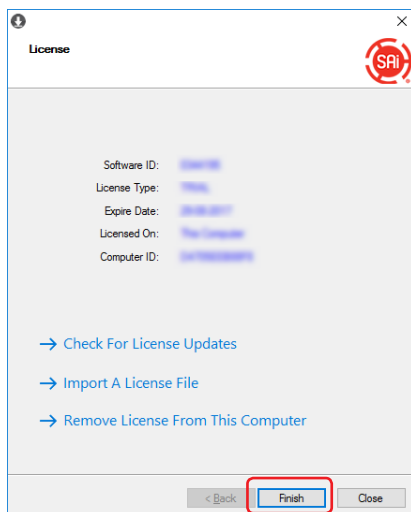


15. Click on the [Next] button.

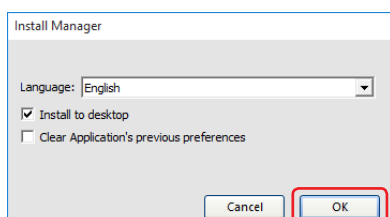
\* The screen displayed in Step 16 might be displayed in the front, in any event click the [Next] button.



16. Click on the [Finish] button.



17. Click on the [OK] button.

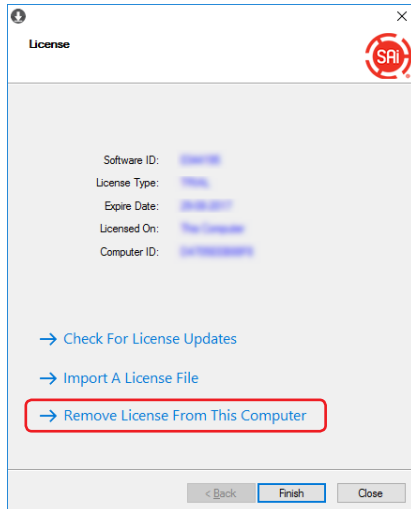


Now, the installation of Graphtec Pro Studio is complete.

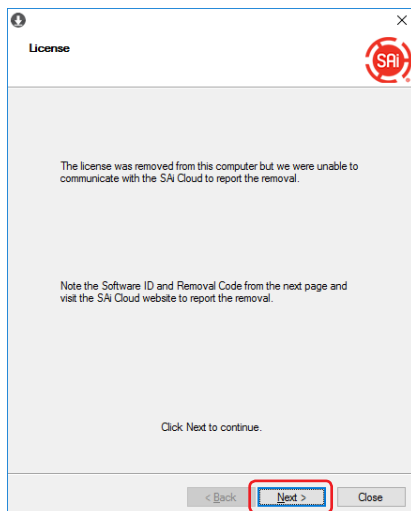
## 4-2 When uninstalling the Graphtec Pro Studio from a computer that has not been connected to the Internet

1. Start the "License Manager" from the computer to uninstall Graphtec Pro Studio.  
\* Supplement: Select the "Start"-"All Programs"-"Graphtec Pro Studio"-"License Manager".  
The "User Account Control" screen is displayed. Click on the [Yes] button.

2. Click on the "Remove License From This Computer" item.

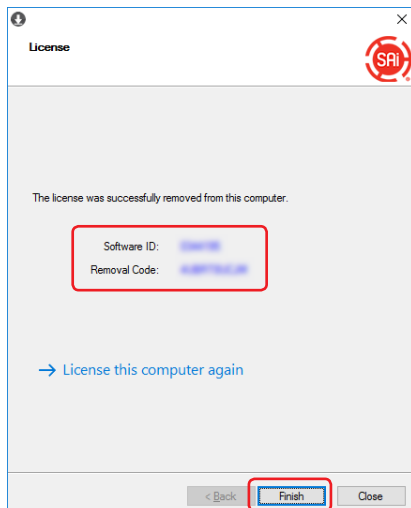


3. Click on the [Next] button.



4. Make a note the "Software ID" and "Removal Code".  
Click on the [Finish] button.

\* Do not lose the "Software ID" and "Removal Code".



5. Start the browser from the computer that has been connected to Internet and enter the "www.saicloud.com" in the address bar. Click on the [Enter] key.
6. Enter the "Email" and "Password" of user account when you registered the Graphtec Pro Studio that you want to uninstall and then click on the [Login] button.

Welcome to the SAi Cloud.

**Activation Code**

Please enter the activation code that accompanied your software purchase.

Activation Code

[Activate](#)

**Login**

Email

Password

[Login](#)

[Forgot Password?](#)

© 2016 SA International, Inc. | [Contact](#) | [Terms](#) | [Privacy](#)

Languages | [简体中文](#) | [繁體中文](#) | [Danish](#) | [Deutsch](#) | [English](#) | [Español](#) | [Français](#) | [Italiano](#) | [日本語](#) | [한국어](#) | [Nederlands](#) | [Português](#) | [Русский](#) | [עברית](#)

7. The products that have been installed are displayed. Click on the "Software ID" icon that match the Software ID noted in Step 4.

License Software ID Status

[Graphtec Pro Studio](#) [Download](#)

© 2016 SA International, Inc. | [Contact](#) | [Terms](#) | [Privacy](#)

Languages | [简体中文](#) | [繁體中文](#) | [Danish](#) | [Deutsch](#) | [English](#) | [Español](#) | [Français](#) | [Italiano](#) | [日本語](#) | [한국어](#) | [Nederlands](#) | [Português](#) | [Русский](#) | [עברית](#)

8. Click on the "License Removed?" item.

**Graphtec Pro Studio**

Software ID:

Product: Graphtec Pro Studio

License Type:

Expires:

Language: Graphtec Studio Languages

License Date:

**Current Install**

Computer ID:

Computer Name:

User Name:

Aug 26, 2016

[Download Now](#)

[License Removed?](#)

[Download License](#)

© 2016 SA International, Inc. | [Contact](#) | [Terms](#) | [Privacy](#)

Languages | [简体中文](#) | [繁體中文](#) | [Danish](#) | [Deutsch](#) | [English](#) | [Español](#) | [Français](#) | [Italiano](#) | [日本語](#) | [한국어](#) | [Nederlands](#) | [Português](#) | [Русский](#) | [עברית](#)

9. Enter the "Removal Code" noted in Step 4 in the "Removal Code" item. Click on the "Remove" button after entering it.

**Software Removed?**

When a software license is removed from your computer, it will attempt to automatically send a removal code over the Internet. If your computer was unable to communicate over the Internet when this occurred, it should have displayed a removal code. Enter the removal code below.

Removal Code  [Remove](#)

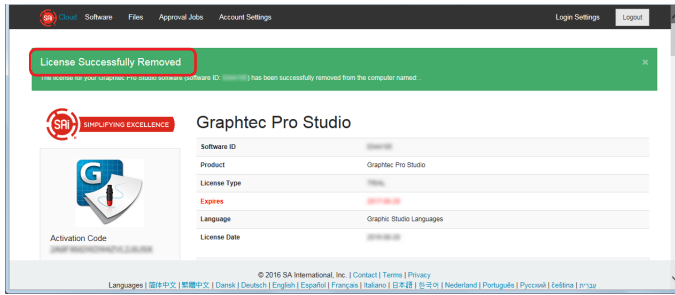
No Removal Code?

[Go Back](#)

© 2016 SA International, Inc. | [Contact](#) | [Terms](#) | [Privacy](#)

Languages | [简体中文](#) | [繁體中文](#) | [Danish](#) | [Deutsch](#) | [English](#) | [Español](#) | [Français](#) | [Italiano](#) | [日本語](#) | [한국어](#) | [Nederlands](#) | [Português](#) | [Русский](#) | [עברית](#)

10. The "License Successfully Removed" is displayed on the top of the screen.

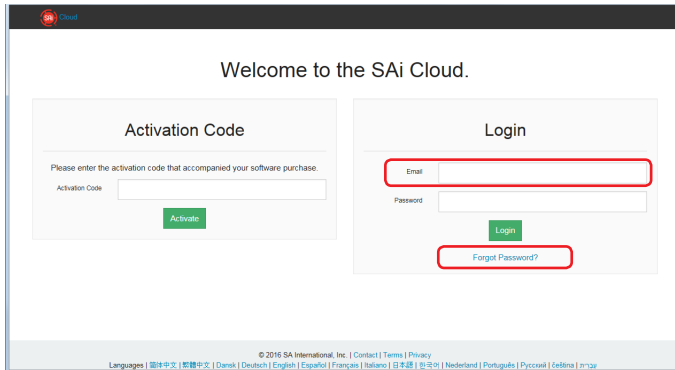


11. Uninstall the Graphtec Pro Studio from the computer to uninstall.

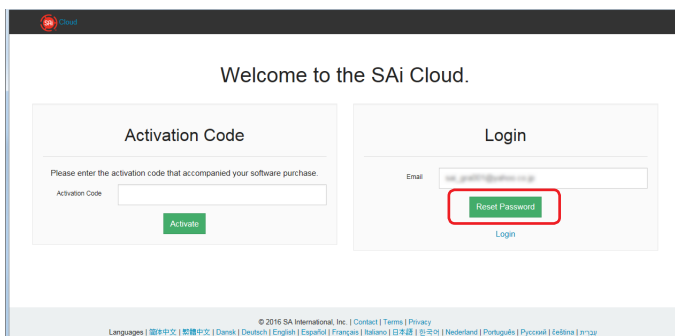
Now, the uninstallation of Graphtec Pro Studio is complete.

## 4-3 When forgetting the password of "SAi Cloud"

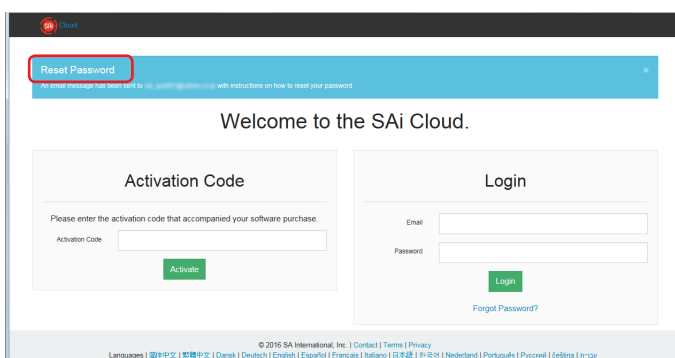
1. Start the browser from the computer and then enter the "www.saicloud.com" in the address bar. Click on the [Enter] key.
2. Enter the Email address that has been registered to the "Email" and then click on the "Forgot Password?" item.



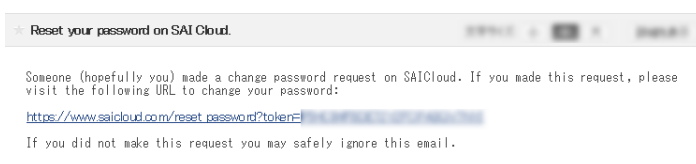
3. Click on the "Reset Password" button.



4. The "Reset Password" is displayed on the top of the screen. E-mail explaining the reset procedure is sent.



5. Open the Email that is sent to the Email address entered in Step 2 and then access to the provided URL.



## 4. When Getting Help

6. Enter the new password in the "Password" and "Retype Password" items. Click on the "Set" button.



SAI Cloud

### Set Password

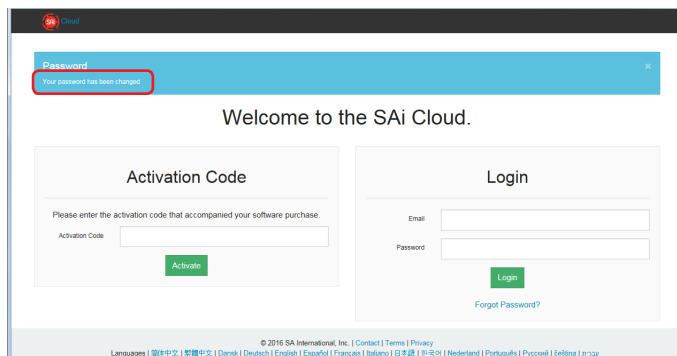
Your new password must be at least 6 characters long.

Password

Retype Password

© 2016 SA International, Inc. | [Contact](#) | [Terms](#) | [Privacy](#)  
Languages | [简体中文](#) | [繁體中文](#) | [Danak](#) | [Deutsch](#) | [English](#) | [Español](#) | [Français](#) | [Italiano](#) | [日本語](#) | [한국어](#) | [Nederlands](#) | [Português](#) | [Pycckий](#) | [עברית](#) | [ไทย](#)

7. The "Your password has been changed" is displayed on the top of the screen.



SAI Cloud

**Password**  
Your password has been changed.

Welcome to the SAI Cloud.

#### Activation Code

Please enter the activation code that accompanied your software purchase.

Activation Code

#### Login

Email

Password

[Forgot Password?](#)

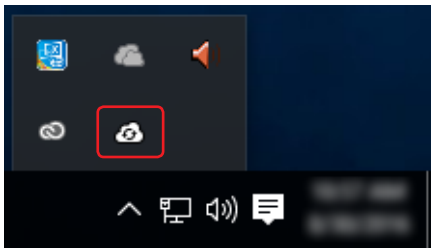
© 2016 SA International, Inc. | [Contact](#) | [Terms](#) | [Privacy](#)  
Languages | [简体中文](#) | [繁體中文](#) | [Danak](#) | [Deutsch](#) | [English](#) | [Español](#) | [Français](#) | [Italiano](#) | [日本語](#) | [한국어](#) | [Nederlands](#) | [Português](#) | [Pycckий](#) | [עברית](#) | [ไทย](#)

Now, the password reset is complete.



## 4-4 When forgetting the password of "SAi Cloud Connect"

1. Select the "SAi Cloud Connect" from the task bar in Windows or from menu bar in Macintosh.



2. Click on the "Forgot Password?" item.

\* If you are signed out from "SAi Cloud Connect", this is displayed.

SAi Cloud Connect

Email:

Password:

[Need an account? Sign Up](#)

[Forgot Password?](#)

(C) 2016 SAi International, Inc.

3. Enter the registered Email address in the "Email" item and then click the "Submit" button.

SAi Cloud Connect

Email:

[Cancel](#)

(C) 2016 SAi International, Inc.

4. The screen switches to the screen to confirm the Email.

SAi Cloud Connect

An email has been sent, with instructions for resetting your password. If the email does not arrive shortly, please check your spam folder.

Email:

Password:

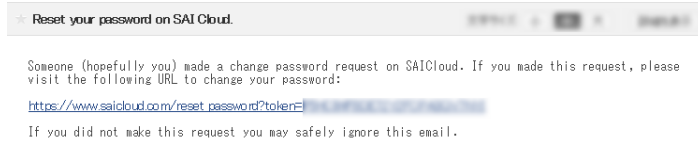
[Need an account? Sign Up](#)

[Forgot Password?](#)

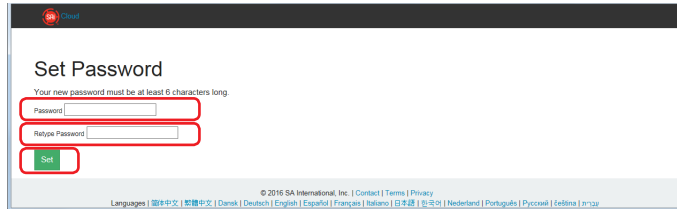
(C) 2016 SAi International, Inc.

## 4. When Getting Help

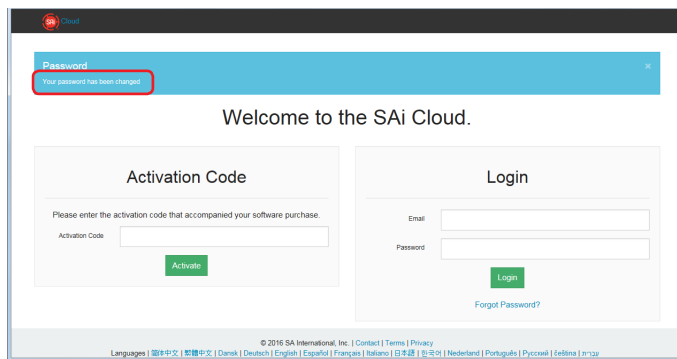
5. Open the Email that is sent to the Email address entered in Step 3 and then access to the provided URL.



6. Enter the new password in the "Password" and "Retype Password" items. Click on the "Set" button.



7. The "Your password has been changed." is displayed on the top of the screen.



Now, the password reset is complete.

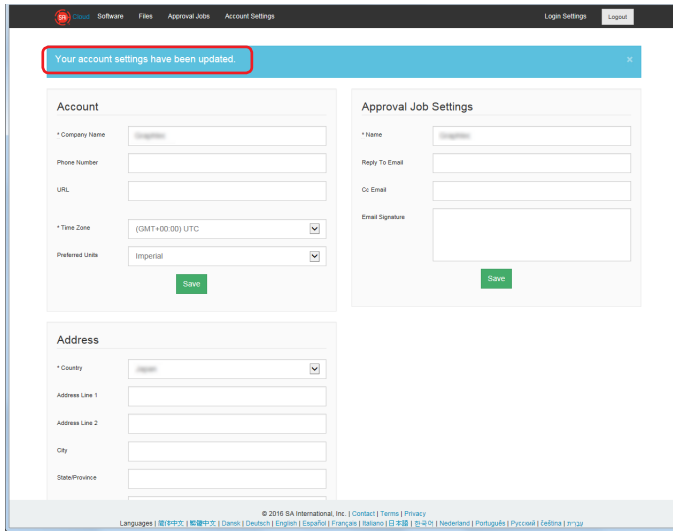
## 4-5 When updating the registration information of SAI account

1. Start the browser from the computer and then enter the "www.saicloud.com" in the address bar. Click on the [Enter] key.
2. Enter the Email and password in the "Email" and "Password" items and then click on the "Login" button.

3. Click on the "Account Settings" item.

4. Update the registration information that you want to change. The "\*" indicates the mandatory field. Click on the "Save" button

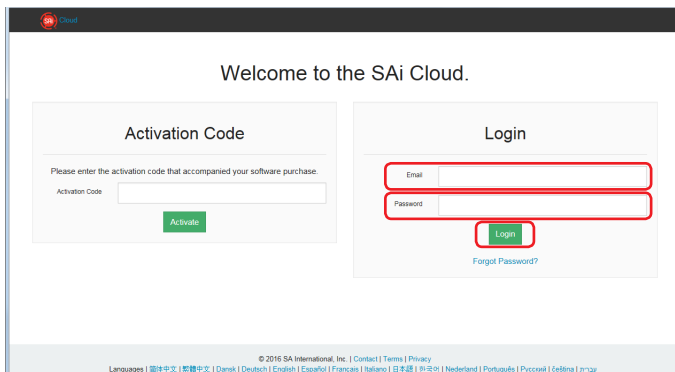
5. The "Your account settings have been updated" is displayed on the top of the screen.



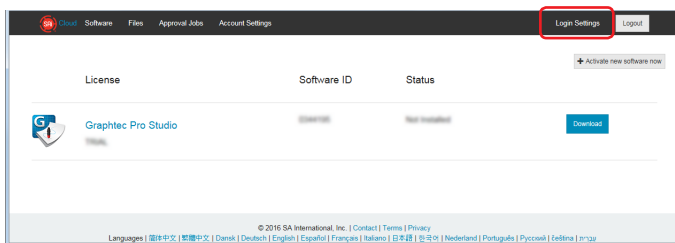
Now, the update of registration information of SAi account is complete.

## 4-6 When changing the Email for login

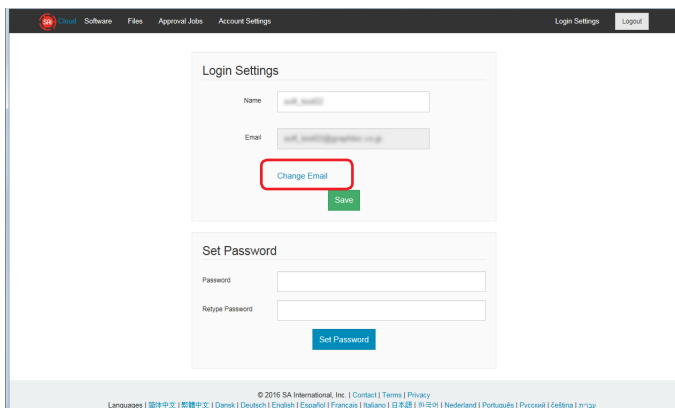
1. Start the browser from the computer and then enter the "www.saicloud.com" in the address bar. Click on the [Enter] key.
2. Enter the Email and password in the "Email" and "Password" items and then click on the "Login" button.



3. Click on the "Login Settings" item.

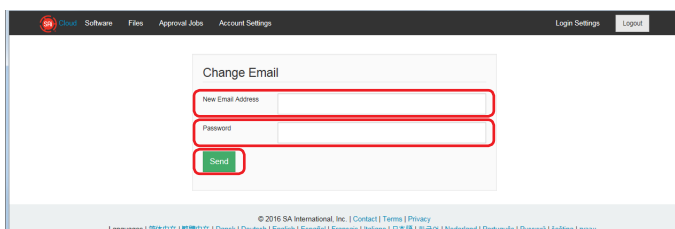


4. Click on the "Change Email" item.



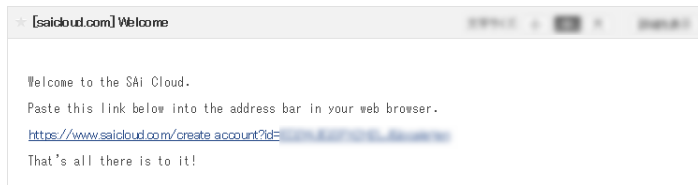
5. Enter the new Email address and password in the "New Email Address" and "Password" items. Click on the "Send" button.

\* The Email address that has already been registered to the SAi Cloud cannot be used.



#### 4. When Getting Help

6. Open the Email that is sent to the Email address entered in Step 5 and then access to the provided URL.

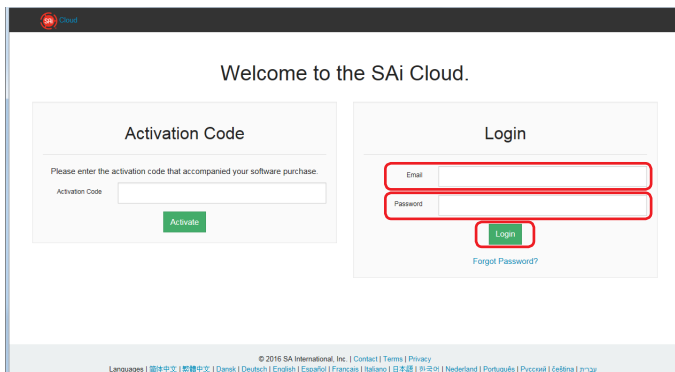


7. Set the new account from here. For details on how to set, refer to the (1-1 User registration to "SAi Cloud") (P6).

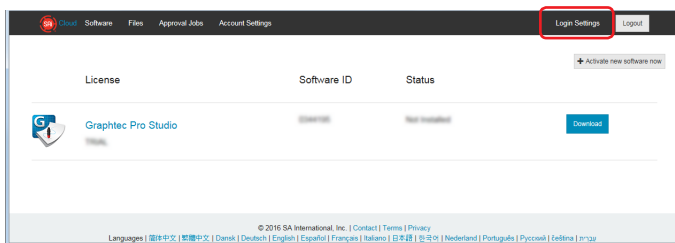
Now, the change of the Email for login is complete.

## 4-7 When changing the password for login

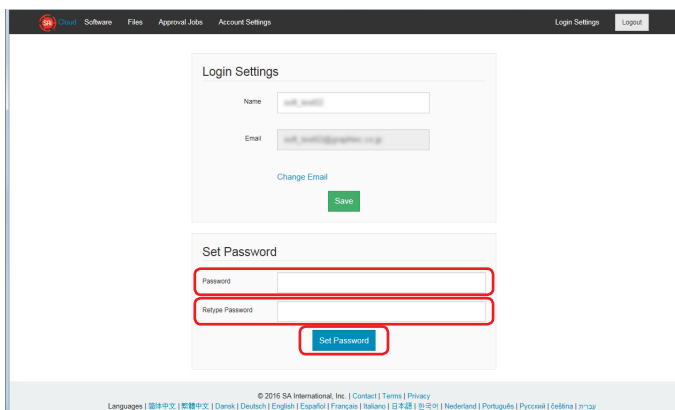
1. Start the browser from the computer and then enter the "www.saicloud.com" in the address bar. Click on the [Enter] key.
2. Enter the Email and password in the "Email" and "Password" items and then click on the "Login" button.



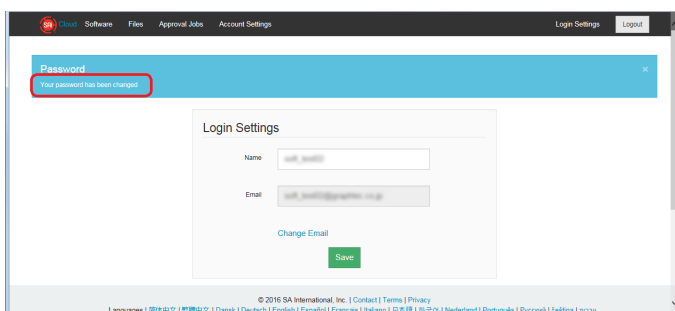
3. Click on the "Login Settings" item.



4. Enter the new password in the "Password" and "Retype Password" items. Click on the "Set Password" button.



5. The "Your password has been changed." is displayed on the top of the screen.



Now, the change of the password for login" is complete.

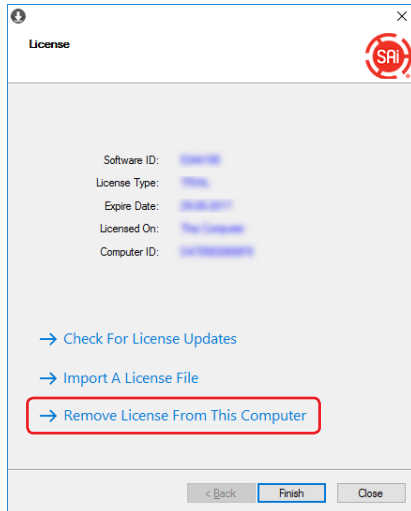
## 4-8 When moving the activation code of Graphtec Pro Studio to the other computer

1. Start the "License Manager" from the computer to release the activation code of Graphtec Pro Studio.

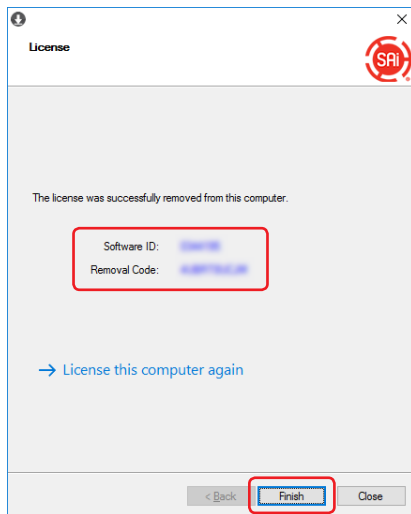
\* Supplement: Select the "Start"-"All Programs"-"Graphtec Pro Studio"-"License Manager".

The "User Account Control" screen is displayed. Click on the [Yes] button.

2. Click on the "Remove License From This Computer" item.



3. Click on the "Finish" button.



4. Start the "License Manager" from the computer to enable the activation code of Graphtec Pro Studio.

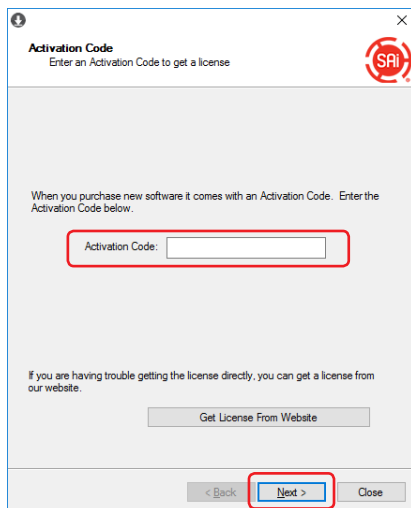
\* The Graphtec Pro Studio must be installed preliminarily.



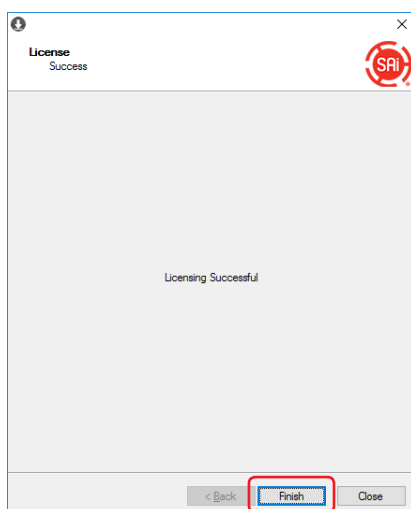
5. Click on the "License this computer again" item.



6. Enter the activation code in the "Activation Code" item.  
Click on the [Next] button.



7. Click the "Close" button.



Now, the movement of the activation code of Graphtec Pro Studio to the other computer is complete.

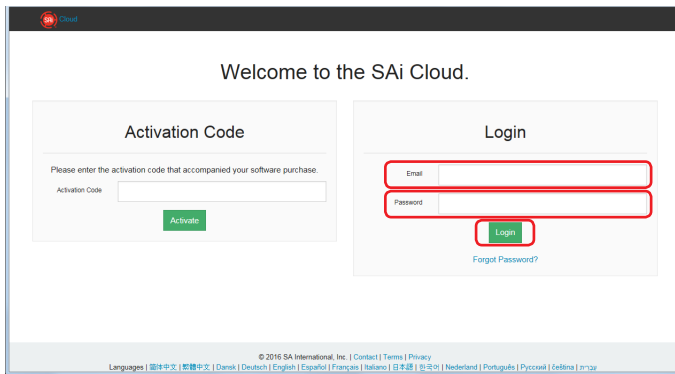
## 4-9 When the computer in which the Graphtec Pro Studio has been installed is broken down

When the computer in which the Graphtec Pro Studio has been installed is broken down and the OS does not boot, you can release the activation by the following procedure.

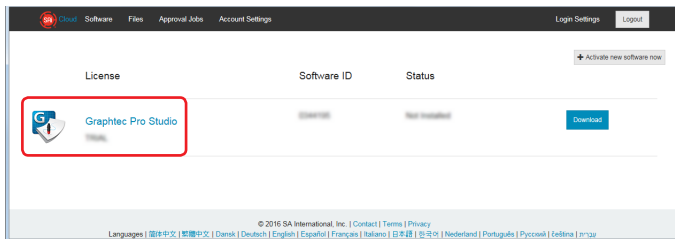
You can re-enable the activation to the other computer or the repaired computer by releasing it.

Number of times that you can release the activation in this way is one time only.

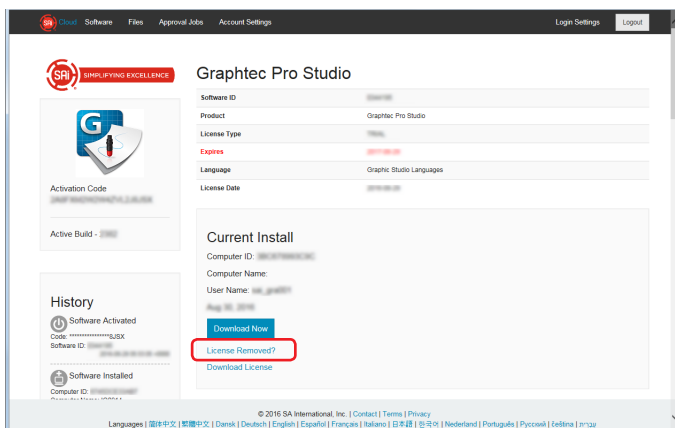
1. Start the browser from the computer and enter the "www.saicloud.com" in the address bar. Click [Enter] key.
2. Enter the Email and password in the "Email" and "password" items and then click on the "Login" button.



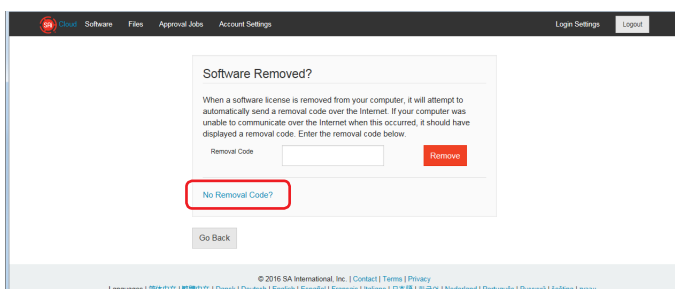
3. Click on the Graphtec Pro Studio icon that has been installed on the failed computer.



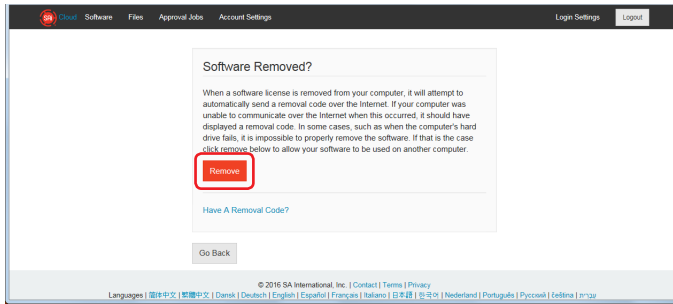
4. Click on the "License Removed?" item.



5. Click on the "No Removal Code?" item.



6. Click on the "Remove" button.



Now, the release of the activation of Graphtec Pro Studio is complete.

Specifications are subject to change without notice.

---

Cutting Master 4 / Graphtec Pro Studio / Graphtec Pro Studio  
Operation Manual

September 30, 2016 1st edition-01

**GRAPHTEC CORPORATION**

---