

F-Mark

Auto sheet feeder

Software manual

F-Mark software manual_E03

CONTENTS

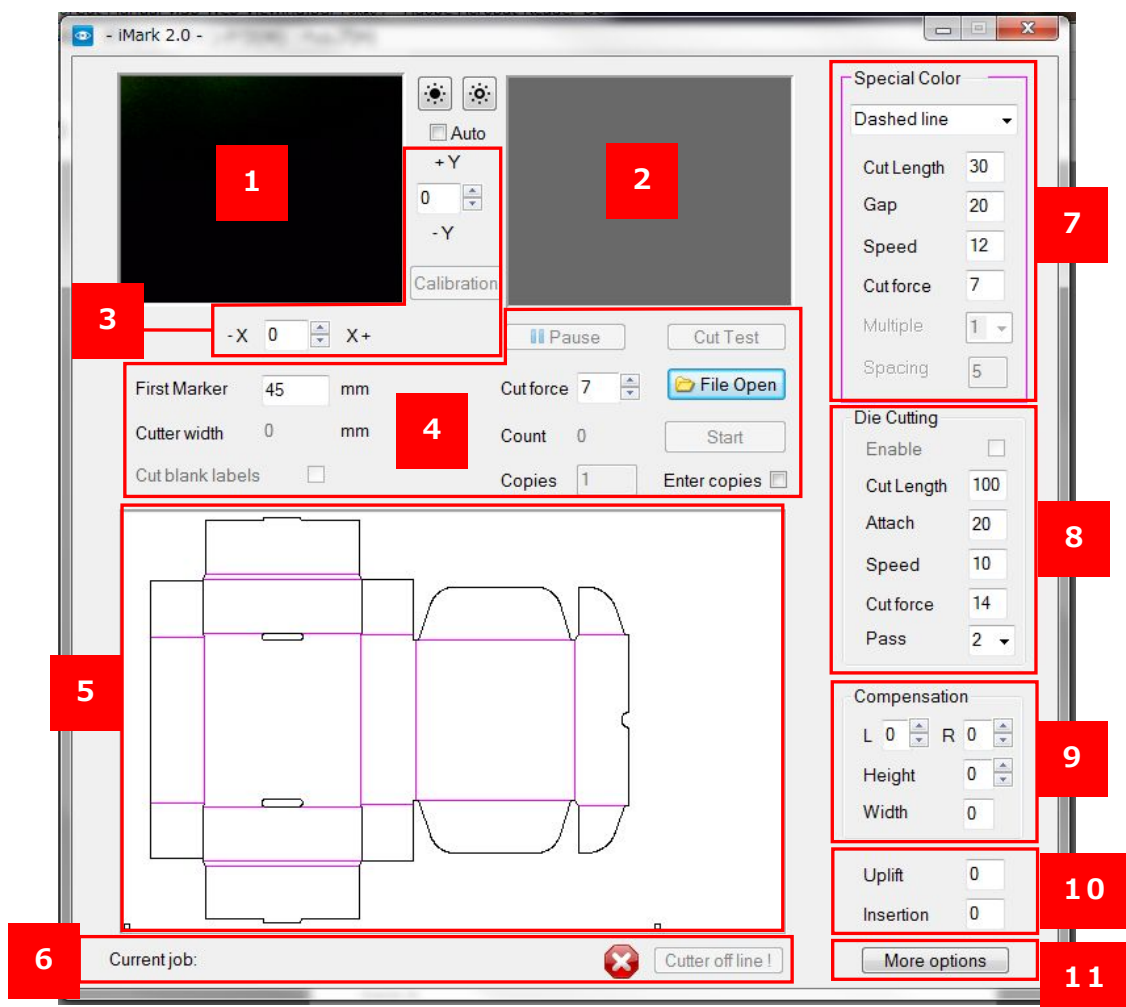
iMark software panel layout	1
Graphics file design	2
Layers for printing	3
Layers for Cutting	4
Save file for Cutting	5
Crop Marks position and Cutting area	6
Open a file for Cutting	7
Status and error messages	8
Basic operations and settings	9
Precautions before cutting	11
Print and Cut alignment	12
Calibration of the F-Mark	13
Compensation	17
Die Cutting	18
Special color panel	20
Special color "Plain Cut" : half cuts to magenta lines and black lines	21
Special color "Plain Cut" : half cuts to magenta lines and perforation cuts to black lines	22
Special color "Dashed line" : perforation cuts to magenta lines and half cuts to black lines	23
Special color "Dashed line" : perforation cuts to magenta lines and black lines	25
Special color "Blade Creasing"	26
Mechanical movement	28
More options	29
Setting to save the parameter values of the iMark software	32

iMark software window layout

- The iMark software allows to handle all the function for the automation of the digital cutting process.
- The install software in on the CD do not need to install any driver , the CE6000Plus is detected automatically.

For further details refer to the F-Mark Setup User's manual.

- The iMark software contains several parameters, most of them are used to set the proper parameters for the different cutting mode.
- Specific parts of the iMark software panel are dedicated to the optical camera and the mechanical movement on the feeder.



- 1.Current camera view .
- 2.Last optical measurement shot.
- 3.Calibration commands
- 4.Common commands area.
- 5.Preview area.
- 6.Current job: [Cutter off line!]
- 7.Special color panel.(Active when a magenta line is used on the graphics file.)
- 8.Die cutting panel.
- 9.Compensation.
- 10.Mechanical movement adjusting of F-Mark.
- 11.More options(other functions)

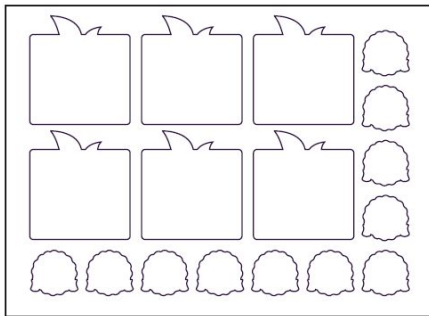
Graphics file design

When cutting labels with iMark software, it is recommended to create separate layers for each graphics as shown below.

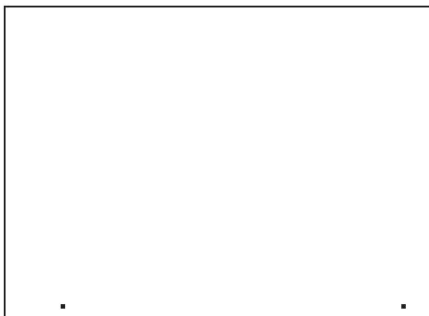
- Graphics layer: Layer on which only the label design are drawn.



- Cut contour layer: Layer on which only contour shapes to be cut by F-Mark are drawn.



- Crop Mark layer: Layer on which only crop marks are drawn.

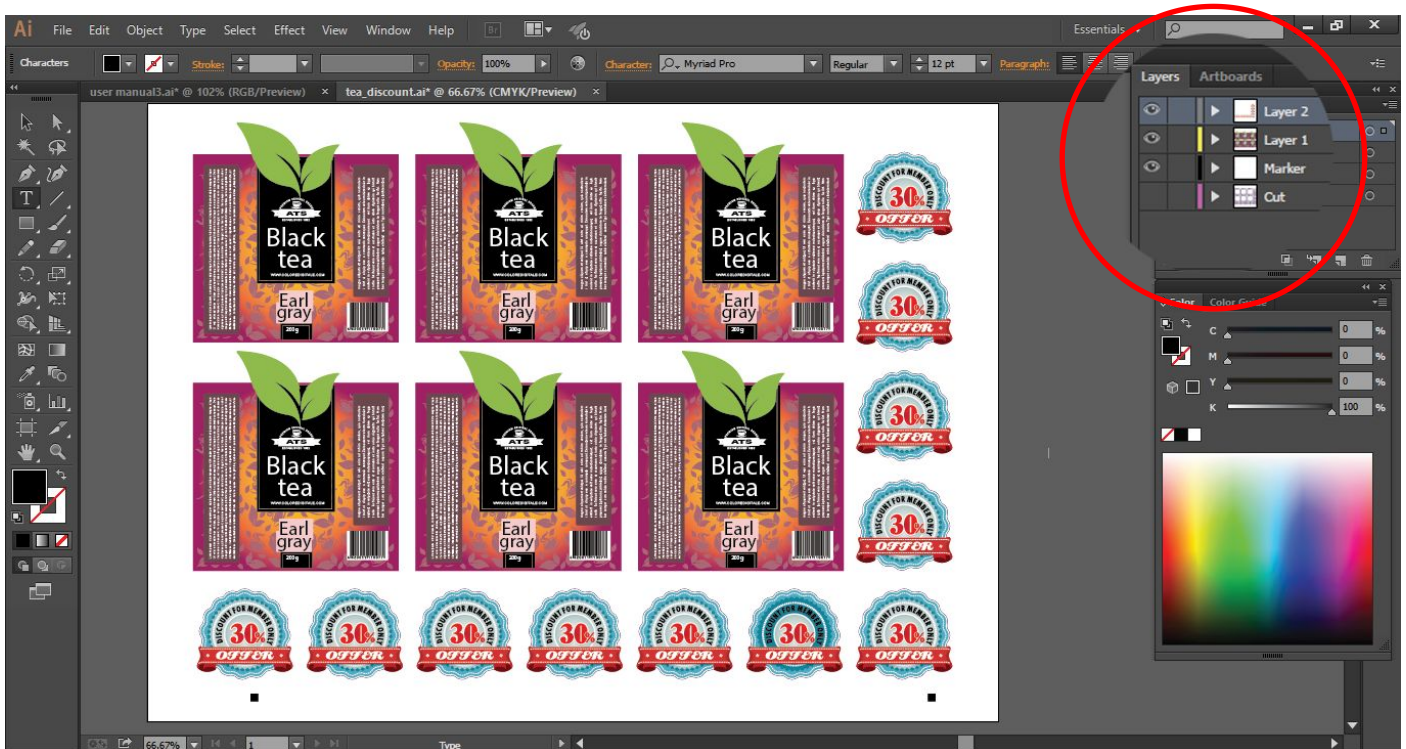


- When printing a label with printer, save the file the Graphics layer and Crop Mark layer enable and print it. In this case, if save or print a file with Cut contour layer enabled, the cut contour image will also printed, disable the Cut contour layer.
- When cutting the contour of the labels with F-Mark, enable the Cut contour layer and Crop Mark Layer and save the file name separately from the file name to be print.
- These can be done with the function of enable and disable layers of Illustrator and Corel Draw.
- If edit a file saved in PDF format with and Illustrator or Corel Draw, the outer frame may automatically generated as the border of the page. This outer frame is unnecessary for label printing and label cutting and may cause of problem of iMark software, please delete it.

Layers for Printing

When printing a label with printer, save the file the Graphics layer and Crop Mark layer enable and print it.

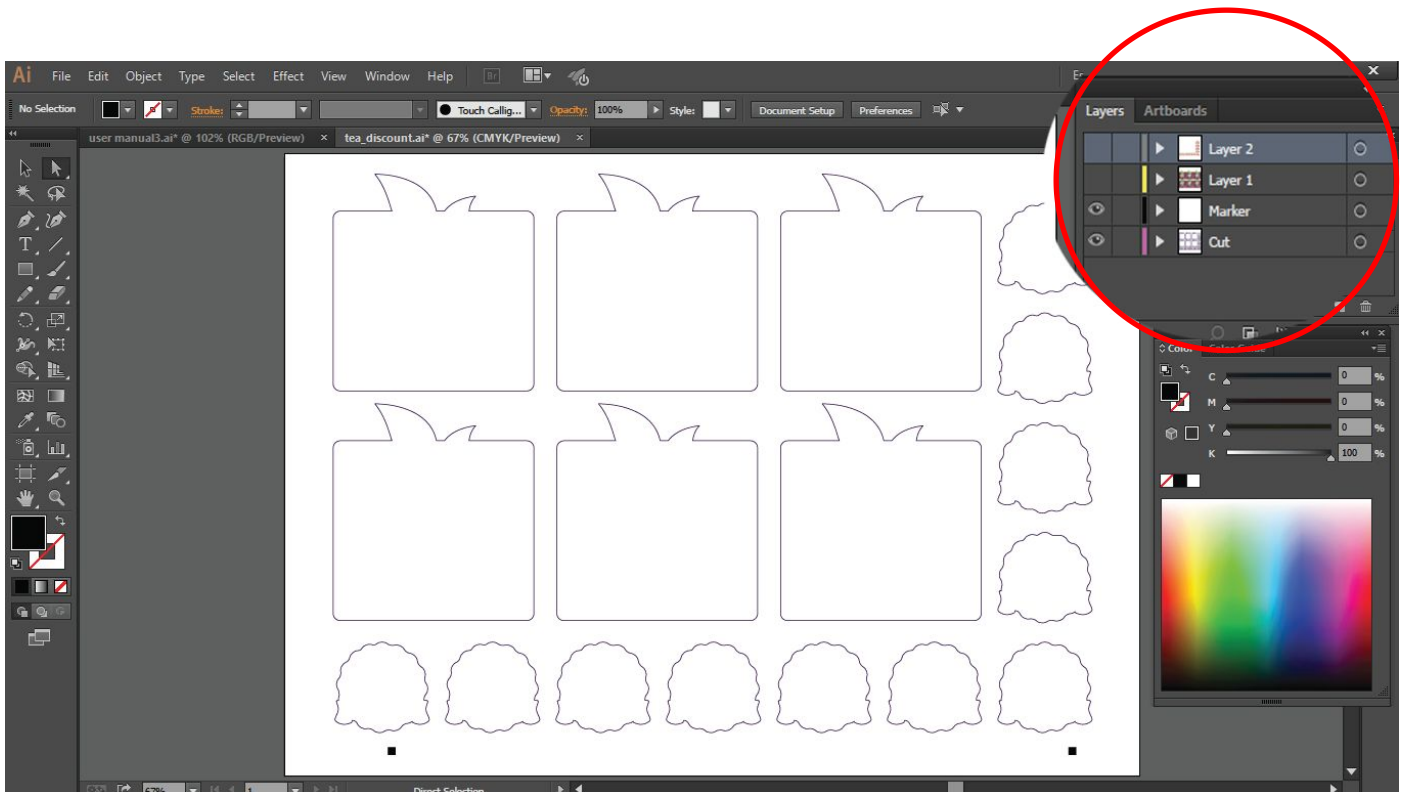
In this case, if save or print a file with Cut contour layer enabled, the cut contour image will also printed, disable the Cut contour layer.



Layers for Cutting

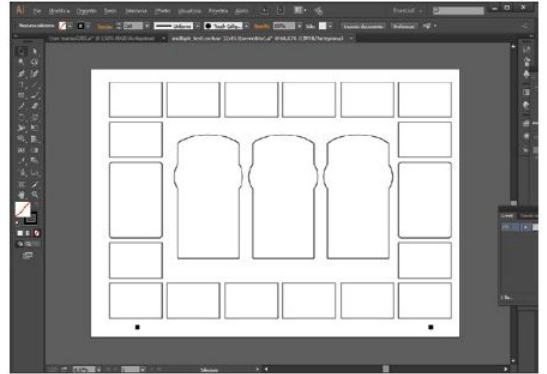
When cutting the contour of the labels with F-Mark, enable the Cut contour layer and Crop Mark Layer and save the file name separately from the file name to be print.

- Disable the Graphics layer.
- If using the “guidelines” function, hide the guidelines or delete it before saving the file.

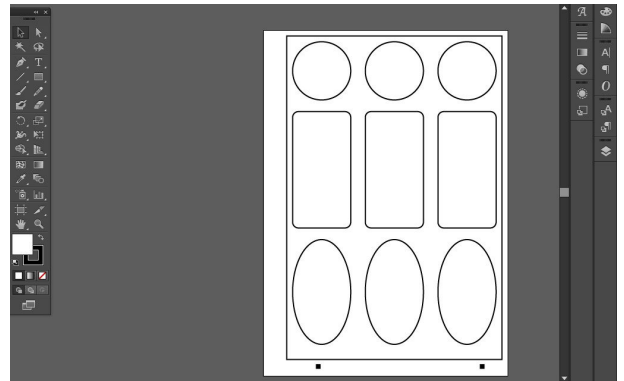


Save file for Cutting

When saving cutting graphics with A3,SRA3,Extended A3, save the graphics in horizontal (landscape) view.



When saving cutting graphics with A4, save the graphics in vertical (portal) view.



- iMark software is not necessary to use specific line widths or specific colors when creating cutting line.
- Make sure to set the crop marks at the bottom of the graphics.
- iMark software supports all versions of Illustrator and Corel Draw.
- iMark software the magenta lines will be treated specially.

Adobe Illustrator export

To save the cutting contour graphics with the Illustrator, enable the Cut contour layer and Crop Mark layer and save with **Illustrator 8 format**.

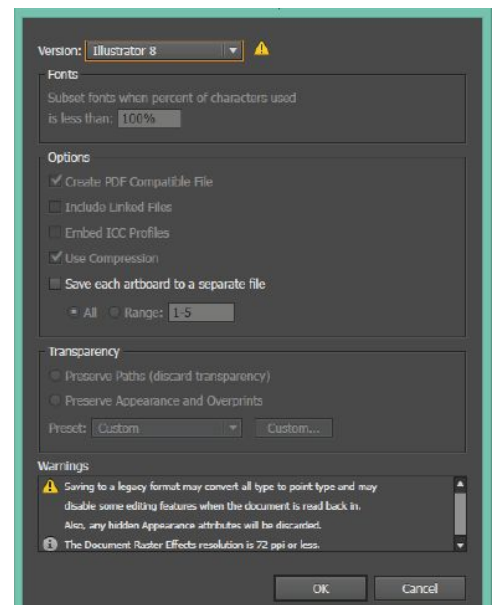
When naming the cutting contour graphics file, save it as a file name different from the printing graphics file name as in the example below.

E.g. Printing graphics file:Label.ai

Cutting graphics file:Label_Contour.ai

NOTICE

iMark software cannot be load the file name of 2byte characters,use the file name of alphabet and number.



Corel Draw Export

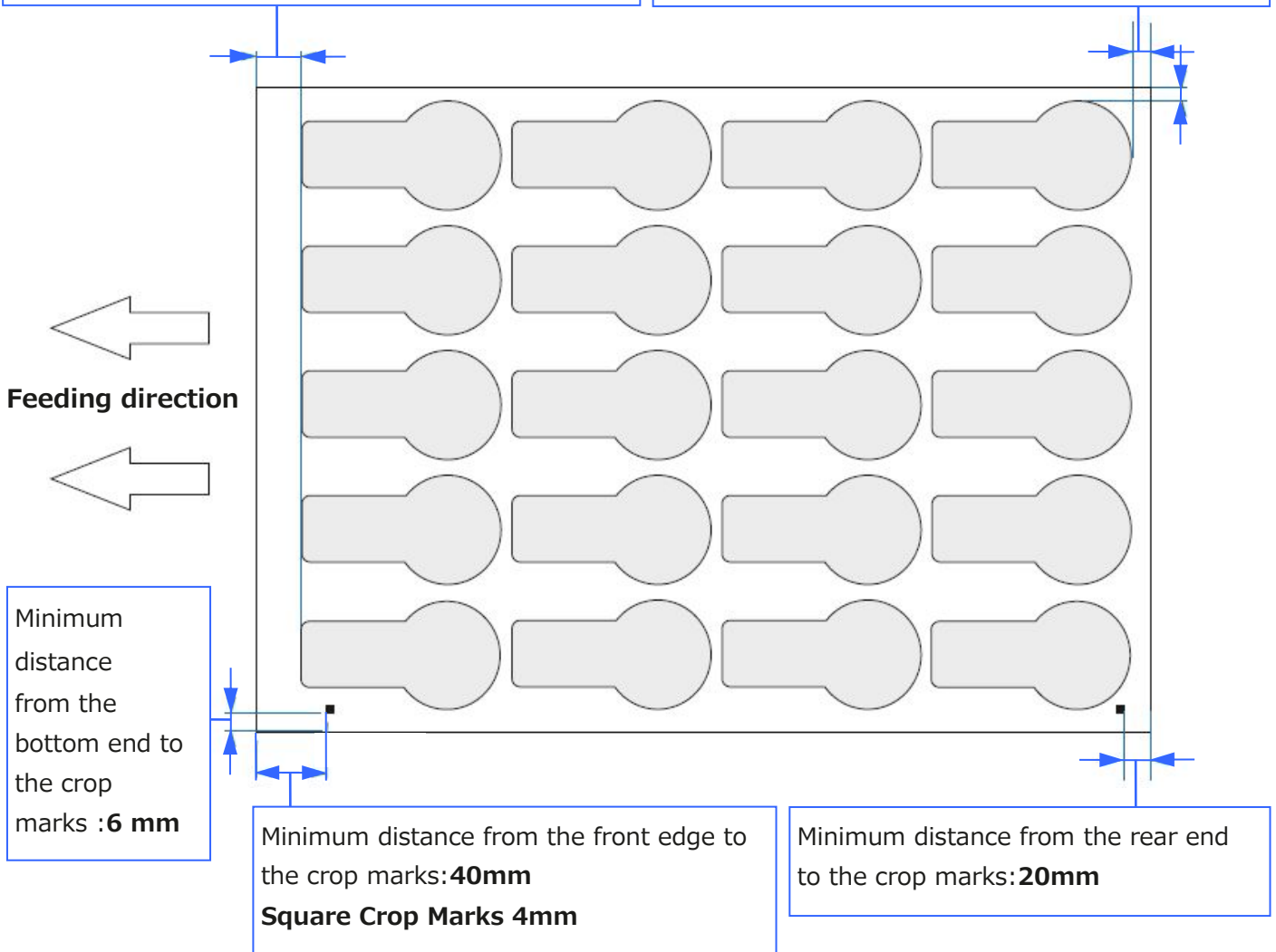
To save the cutting contour graphics with the Corel Draw, exporting it to EPS format.

When exporting,enable the check box of "Selection only ", and select the contour and crop marks and save them.

Crop Marks position and Cutting area

Minimum distance from the front edge to cutting line
Adhesive cut:20mm
(Recommended value:30mm)
Die cutting :25mm
(Recommended value:35mm)

Minimum distance from the top edge to cutting line
5mm (Recommended value:15mm)
 Minimum distance from the rear end to cutting line
5mm (Recommended value:15mm)



Spacing between printed graphics and Crop Marks

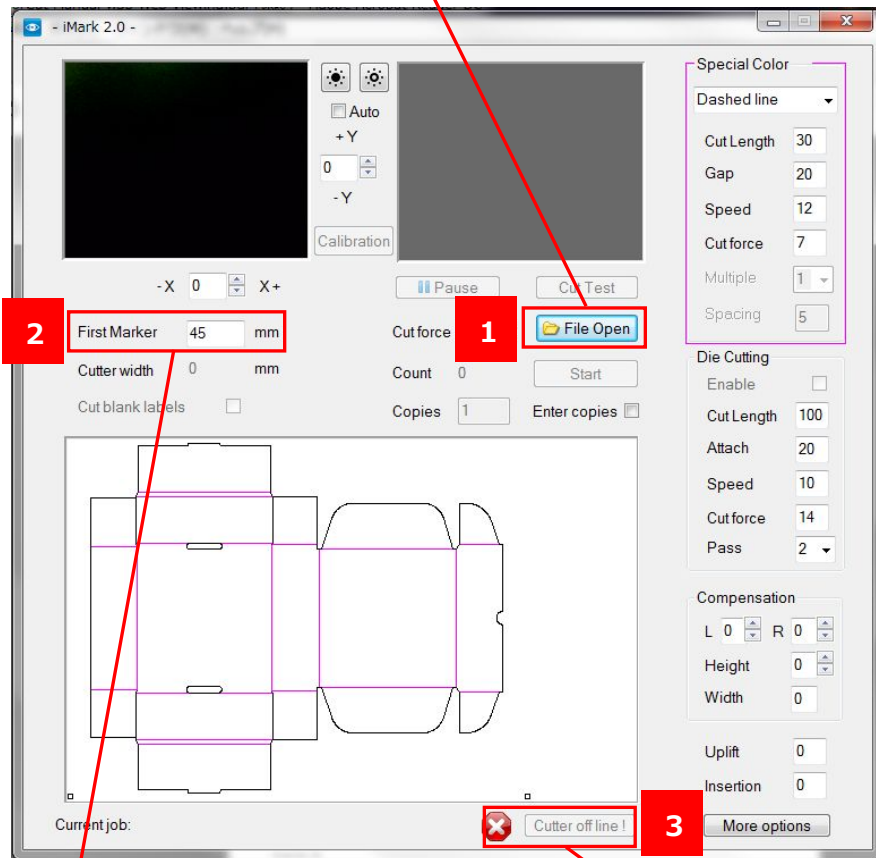


- The minimum distance between the crop mark and the printed graphics is **5 mm**. If the graphics is too close to the crop mark you can get the error: 'Marker not found'
- Most of digital printer can print up to **5 mm** from the border of the sheet, we suggest a minimum distance of **6mm** between the crop mark and the bottom border of the sheet.

Open a file for Cutting

1: The "File Open" button is used to load the Cutting data file into the iMark software.

If the cutting data file is not saved in Illustrator 8 format, a message of "Graphic file not saved correctly" is displayed.



2: For the "First Marker" input the distance from the front edge of media to the leftmost crop mark. The value of this distance is about 5mm. If the inputted value for the "First Marker" is extremely different or the crop marks are not in the center of the camera, the message "Marker not found" will be displayed.

3: When you press the "Open last job" button, the cutting data file that was used last time is displayed. When available, it is reported beside.



"First Marker" distance

Status and Error messages

Current job: C:\cdr\glow gold N contour.ai



Cutter ready

When loading the cutting data file in to the iMark software, the directory in the computer of the loaded graphics file is displayed in the Status bar.



Cutter off line !

When "Cutter off line" is displayed, the CE6000 is not available. Make sure the power of CE6000 is on, and USB cables are connected correctly. For details, refer to F-Mark Setup User's manual.



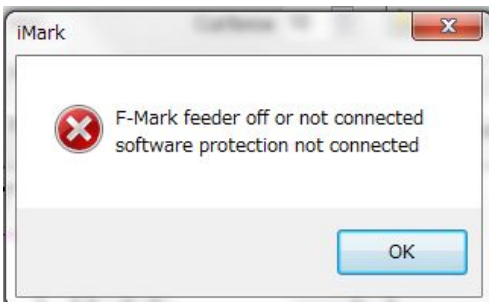
Load Media

When "Load Media" is displayed, the CE6000Plus is connected but preparation of CE6000Plus is not finished. Rise the Set Lever of CE6000Plus, then press the "2" button on the control panel of CE6000Plus. For details, refer to F-Mark Setup User's manual.



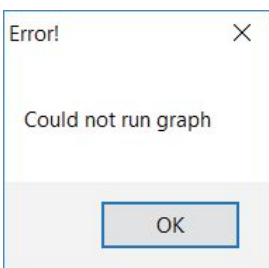
Cutter ready

When "Cutter ready" is displayed, "Cut Test" and "Start" button are available. Cut operation is possible.



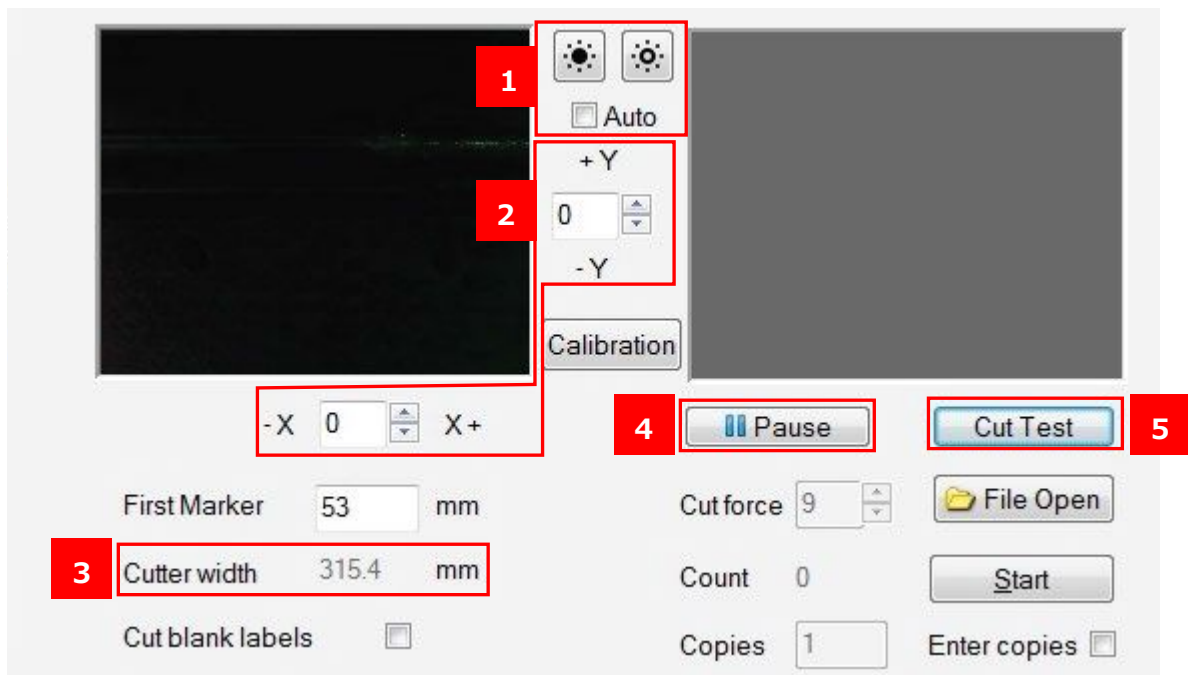
When select "Cut Test" or "Stat" button, "F-Mark feeder off or not connected software protection not connected" is displayed, and F-Mark does not work.

Make sure that the the power of F-Mark is on, and USB cables are connected correctly. For the details, refer to F-Mark Setup User's manual.



When "Could not run graph" is displayed the USB cable of camera is may not connected to the USB Hub or multiple application softwares are may running on the computer. Make sure that the USB cable of the camera is connected correctly and close the application softwares other than iMark software.

Basic operations and settings



1. Brightness adjustment of the camera: when using media with high reflectance, adjust the brightness of the camera by this button.

NOTICE: Do not use "Auto" button.

2. Adjustment of cutting position: Cutting position can move in X and Y direction by each inputted value.

Input units: 0.1mm, E.g. 1=0.1 mm.

3. "Cutter width" is displayed the width of Push Roller of CE6000Plus.

4. "Pause": When press "Pause" to stops the cutting. Pressing "Pause" button once, display is changes from "Pause" to "Resume". When press the "Resume" to restart the cutting.

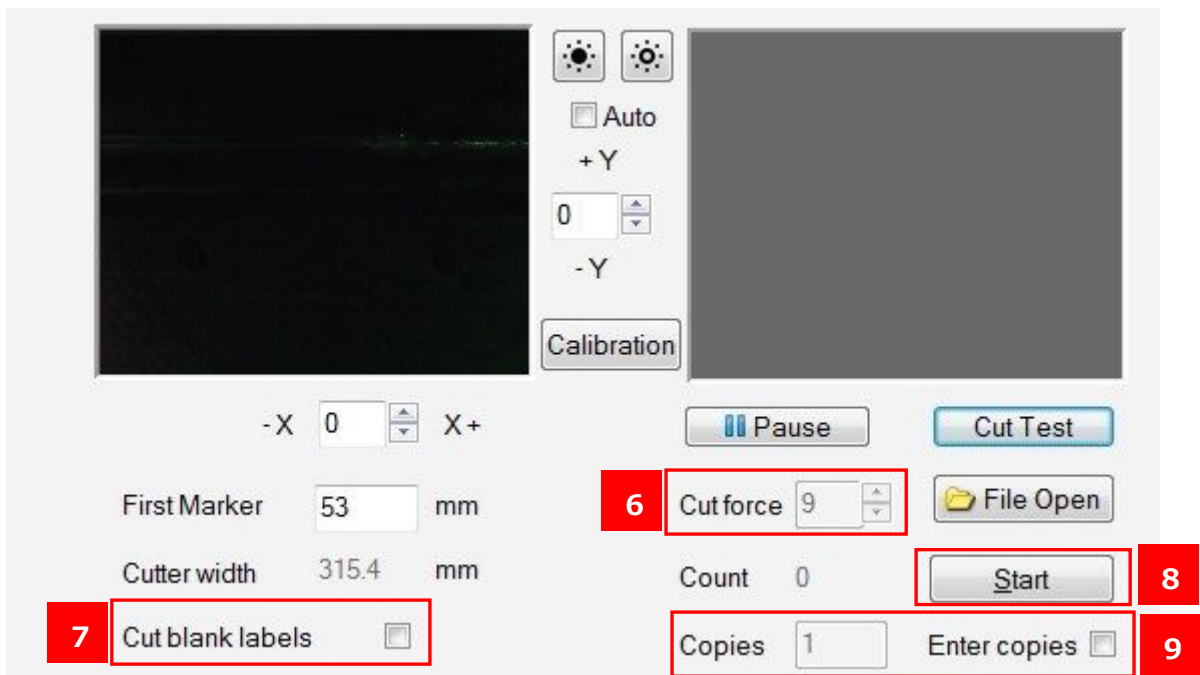
NOTICE:

If press the "Pause" button during the cutting, the cutting will be stopped when the current cutting is completed.

5. "Cut Test": When press the "Cut Test" to starts one sheet of cuts.

NOTICE:

- **Make sure that the adjust the cutting position and cut force by performing the "Cut Test" before continuous cutting.**
- **The inputted values and changed parameter values are reflected when "Cut Test" is performed.**



6. "Cut force": "Cut force" is can be change the cut force of Cutting Plotter.

NOTICE:

Setable range of "Cut force" varies depending on the type of cutting plotter which connected to the F-Mark.

CE6000Plus :1 to 38.

CE6000 :1 to 31.

7. "Cut blank labels": When check the "Cut blank labels", the F-Mark can cutting with out reading the crop marks.

NOTICE

Crop Marks are not read when cutting with this mode, but crop marks are required for data of cutting contour graphics.

8. "Start": The "Start" button lanches the cutting. And the number of cut sheet is displayed on "Count".

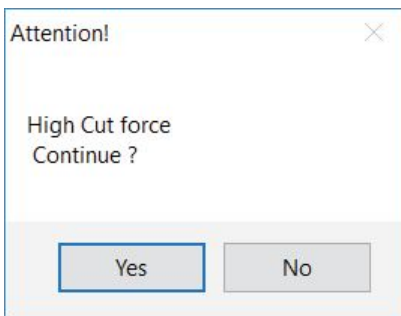
9. 'Enter copies': When check the "Enter copies", it can be input the number of copies in the "Copies". After inputting the number of copies, performed continuous cut by "Start" button, cutting for the number of inputted in "Copies" will start.

NOTICE

If press "Start" button without checking "Enter copies", and start cutting, the cutting will continue until the media runs out.

Precautions before Cutting

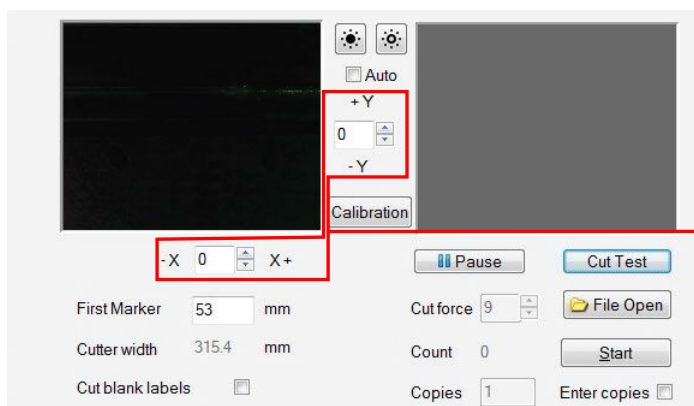
- Make sure that the to adjust the cutting position and cut force by performing the "Cut Test" before continuous cutting
- When using labels media, perform the test cut to confirm that the length of the cutter blade is correct and that the label is correctly peeled off from the media.
- The cutter blade gradually wears out each time media cutting. After a lot cutting, please check the cut quality.
- When the cutter blade is new the cut force setting for an adhesive media may vary from 6 to 9.
- If set the cut force higher than 14, the warning message is displayed as "Cut force to high-Continue?" when press the "Cut Test" or "Start". It is an informative message, press "OK" to continue. If using a standard adhesive media, when exceed the cut force of 14, it is time to replace the cutter blade or at least to check if you have a spare on to replace soon.



NOTICE

For the how to set the Cutter Plunger to the Cutting Plotter CE6000Plus and how to adjust the blade length of Cutter Plunger, refer to the User's manual of CE6000Plus.

Print and Cut alignment



The **Y** adjustment next to the preview window allows set the vertical direction of cutting position. Increasing the Y move the cutting position upwards. Decreasing the Y move the cutting position downwards.

The **X** adjustment allows set the the horizontal direction of cutting position.

Increasing the X move the cutting position rightwards.

Decreasing the X move the cutting position Leftward.

The input unit is tenth of one mm

E.g. Inputted value is 10=1mm

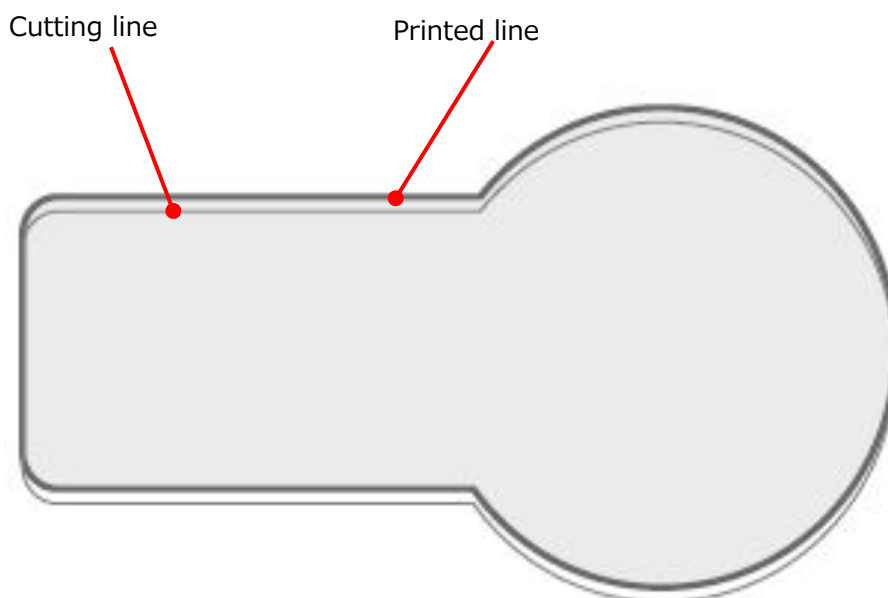
The adjustment is necessary the first time install the F-Mark, and when changing the media size,media type, cut design,and disconnect the F-Mark from the CE6000, and disconnect the iMark software. When click the "Start" button, the inputted values for X adjustment and Y adjustment becomes "0" after saving the inputted values.

Although the values of X adjustment and Y adjustment can be input during the cutting, the inputted values becomes valid from next sheet.

E.g. If the result of cutting is 0.5 mm below the printed image as shown below, input the 5 to Y adjustment and move the cutting position 0.5mm above.

NOTICE

Depending on the media types and performance of equipment, the adjustment values X and Y may not be 1=0.1mm, adjust the adjustment values of X and Y depending on the cutting result.

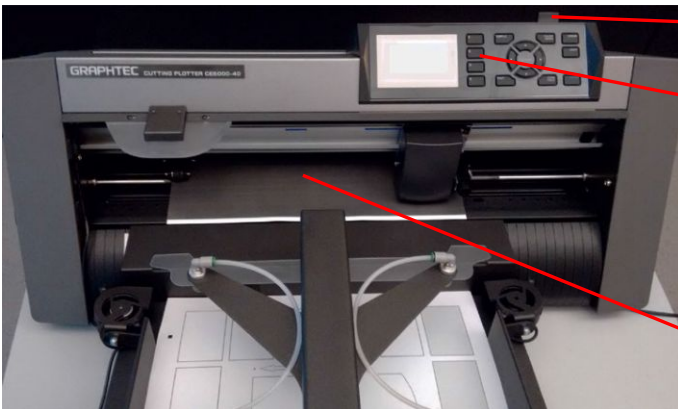


Calibration of the F-Mark

Perform the calibration of the F-Mark for correctly read the crop mark.

If disconnect the F-Mark from the CE6000Plus or change the operation computer, perform the calibration of the F-Mark from the 'Calibration' button in the iMark software.

- 1 Lower the "Set Lever" of CE6000Plus, and load the "Calibration Sheet" into the CE6000Plus. Then rise the "Set Lever" of CE6000Plus, and press the "2" button on the control panel of CE6000Plus.



Set Lever of CE6000Plus

"2" button on the control panel

When load the calibration sheet into the CE6000Plus, load the calibration sheet at the center of left and right Push Roller of CE6000Plus

If the tip of calibration sheet is aligned with the tip of F-Mark, the calibration sheet can be load the straight into the CE6000Plus.

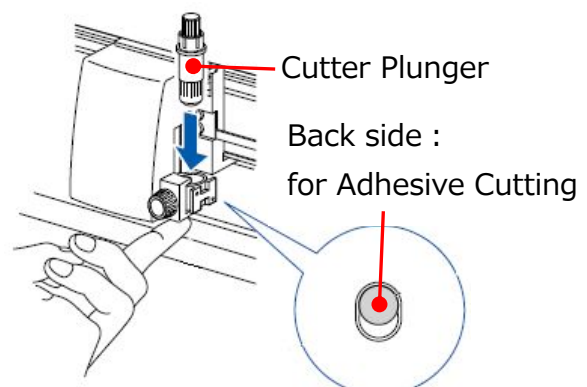
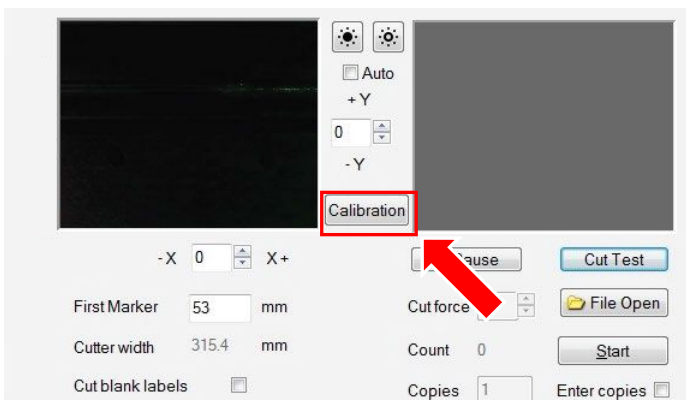
NOTICE

If finished using the accessory calibration sheet, the print data file "calibblack.pdf" for calibration sheet is included in the accessory CD. Print this data to the label media for using the calibration of the F-Mark.

- 2 Set the Cutter Plunger to the CE6000Plus, and press the "Calibration" button in the iMark software.

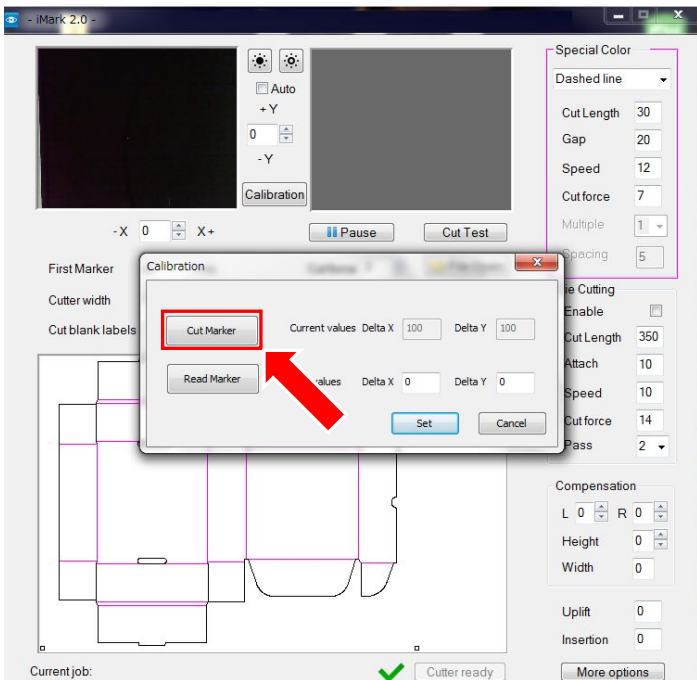
NOTICE

- For the how to set the Cutter Plunger to the Cutting Plotter CE6000 Plus and how to adjust the blade length of Cutter Plunger, refer to the User's manual of CE6000Plus.
- When perform the calibration of the F-Mark, attach the Cutter Plunger to the back side position (for Adhesive Cutting).



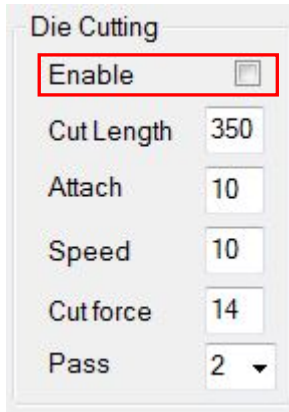
3

Press the "Cut Marker" button in the iMark software.
Then Cutting Plotter cuts small square for the calibration.



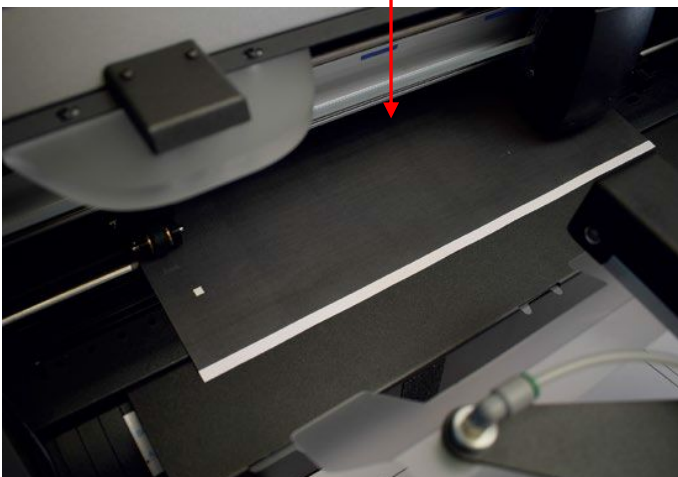
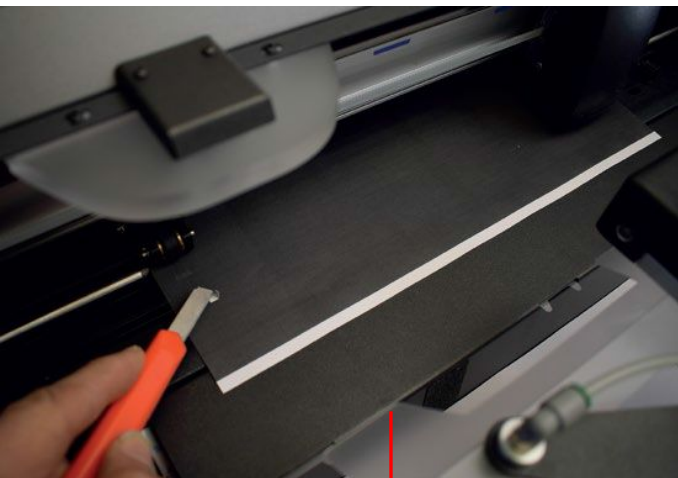
NOTICE

Make sure that the "Enable" in the "Die Cutting" is not checked when performing the calibration.



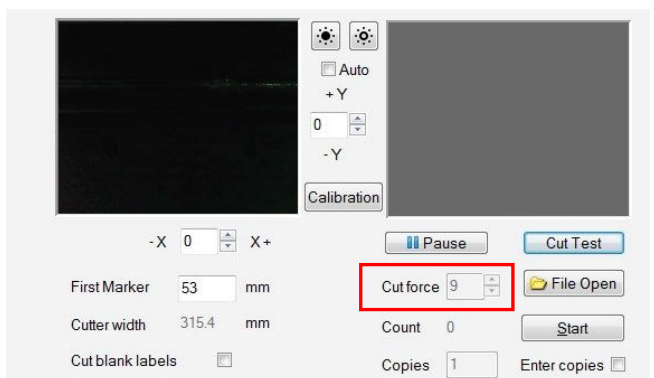
4

Peel off the small square cut by CE6000Plus from the calibration sheet so that the white square can be see.



NOTICE

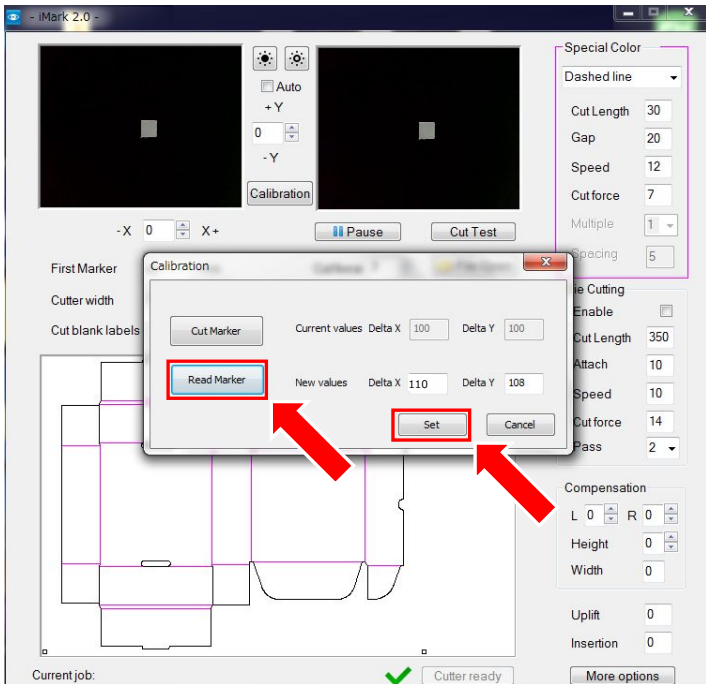
If the cut square can not be peeled off well from the calibration sheet or if the cut square cut out from the calibration sheet, please adjust the "Cut force" in the iMark software,



or adjust the blade length of Cutter Plunger.

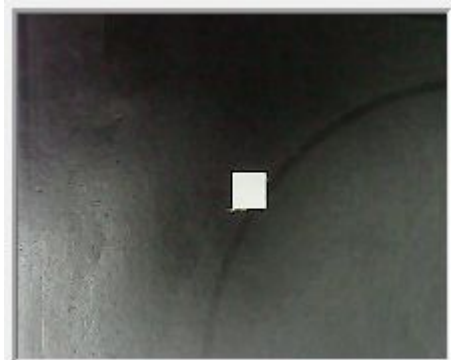
*For the how to adjust the blade length of Cutter Plunger, refer to the User's manual of CE6000Plus.

- 5** Press the “Read Marker” button in the iMark software, then the iMark software read the calibration data. And press the “Set” button in the software, then the iMark software saved calibration data.



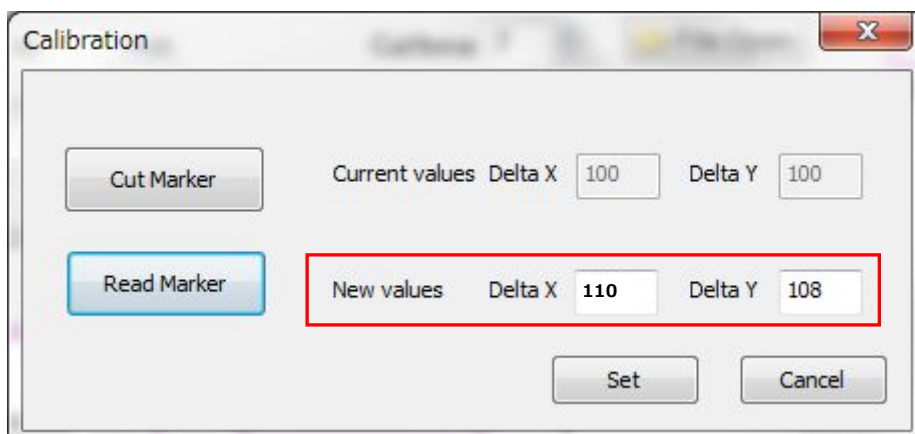
NOTICE

If “Read Maker” is performed while the calibration sheet is reflecting by the lighting in the room, the correct calibration may not be performed, in this case, please shade the camera part and then perform “Read Maker”



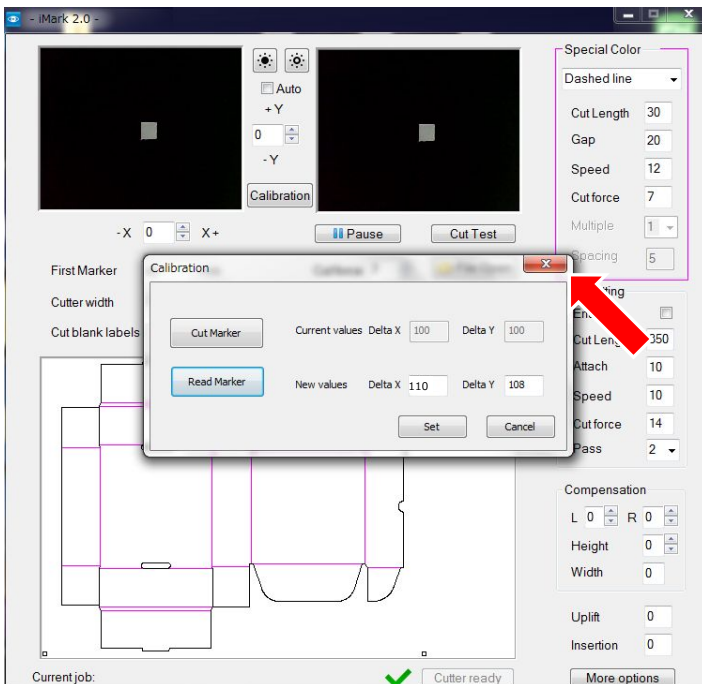
NOTICE

When correct calibration is performed, the value of *90 to 120 is displayed in the “New values Delta X” and the value of *95 to 135 is displayed in the “New values Delta Y”. (*The values are ideal values, there are varies depending on the equipment.)
 If values for Delta X and Delta Y are much different than the above ideal values, the calibration was not performed correctly. Please calibration again.



6

Press the "X" button on the upper left on the Calibration window to close it, and remove the calibration sheet from the cutting plotter and finish the calibration.



7

After calibration is finished, perform the "Test Cut" to check the calibration of the F-Mark is correctly.

NOTICE

- The calibration data is saved in the operation computer.
- When change the operation computer, needs calibration with changed computer.
- When USB cable connection was disconnected, needs calibration again.
- When performed calibration under the strong lighting such as spotlight, calibration may not be performed correctly.

Compensation

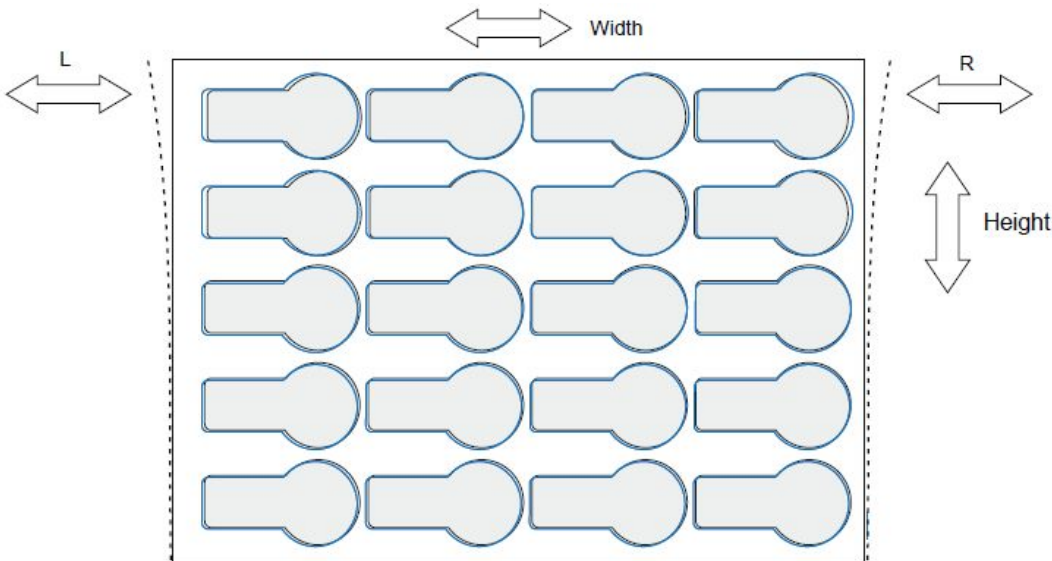


With the XY adjustment, you can reach the maximum precision on the bottom part of the print. The digital printers are most cases affected by some distortions, the optical detection of two crop marks, on our system allows an high precision neat the crop marks, while some supplemental setting is useful to compensate other distortion on the print, the distortions are often constant for each printer.

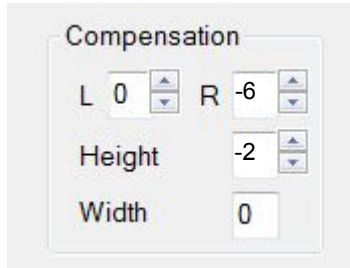
- L** :The "L" parameter sets the cut positon in the upper left area.
Input units:0.1mm, Setable values:-30 to 30 (-3mm to 3mm).
- R** :The "R" parameter sets the cut position in the upper right area.
Input units:0.1mm, Setable values:-30 to 30 (-3mm to 3mm).
- Height** :The "Height" parameter expands the cut path on the height.
Input units:0.1mm, Setable values:-100 to 100 (-10mm to 10mm).
- Width** :The "Width" parameter expands the cut path on the width and when used cut without the detection of the crop marks.
Input units:0.1mm, Setable values:-100 to 100 (-10mm to 10mm).

NOTICE:

Be sure to perform the "Cut Test" after inputted parameters to confirm the cut position.



In the above figure, the cutting position is shifted the upward and rightward from the printed Position.

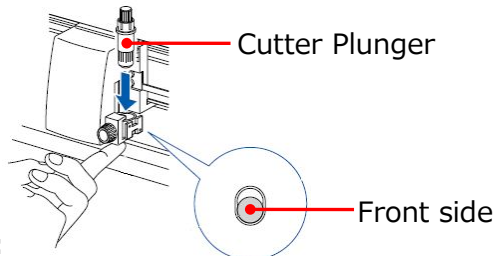


In this case, inputted the -6 to "R" and inputted -2 to "Height".

Die Cutting

You can make the cutting on cardboard. Indicatively the usable paperweight goes from 120 to 350 g/m²(35 to 80 lbs).thinner or thicker papers can be tested to verify the usability.When use the die cutting you have to move the blade Cutter Plunger in the front side of the Cutting Plotter,In this way, the blade works over the specific when it perforates the sheet.

Die Cutting	
Enable	<input checked="" type="checkbox"/>
Cut Length	350
Attach	10
Speed	10
Cut force	14
Pass	2



NOTICE:

For the how to set the Cutter Plunger to the Cutting Plotter CE6000 Plus and how to adjust the blade length of Cutter Plunger, refer to the User's manual of CE6000Plus.

Enable :When perform the "Die Cutting", put a check mark in "Enable".
To change the values of "Cut Length" and "Attached",uncheck "Enable".

Cut Length :Length to cut with cutter.
Input units:0.1mm, Setable values:1 to 1000(0.1mm to 100mm).

Attach :Length to raise the cutter and leave it without cutting.
Input units:0.1mm, Setable values:1 to 100(0.1mm to 10mm).

Speed :It can be set the cut speed at "Die Cutting".
Setable values :1 to 60 [cm/sec].
Recommended setting values :5 to 15 [cm/sec].

Pass :It can be set the number of times to "Die Cutting" repeatedly.
Setable values :1 to 3.

Cut force :It can be set the cut force at "Die Cutting".
NOTICE: Setable range of "Cut force" varies depending on the type of cutting plotter which connected to the F-Mark.
CE6000Plus :1 to 38.
CE6000 :1 to 31.

It can be reduced consumption of the cutter blade, if setting the "Cut Force" less than 20 and setting the "Pass" to 2.

Die Cutting

Enable

Cut Length

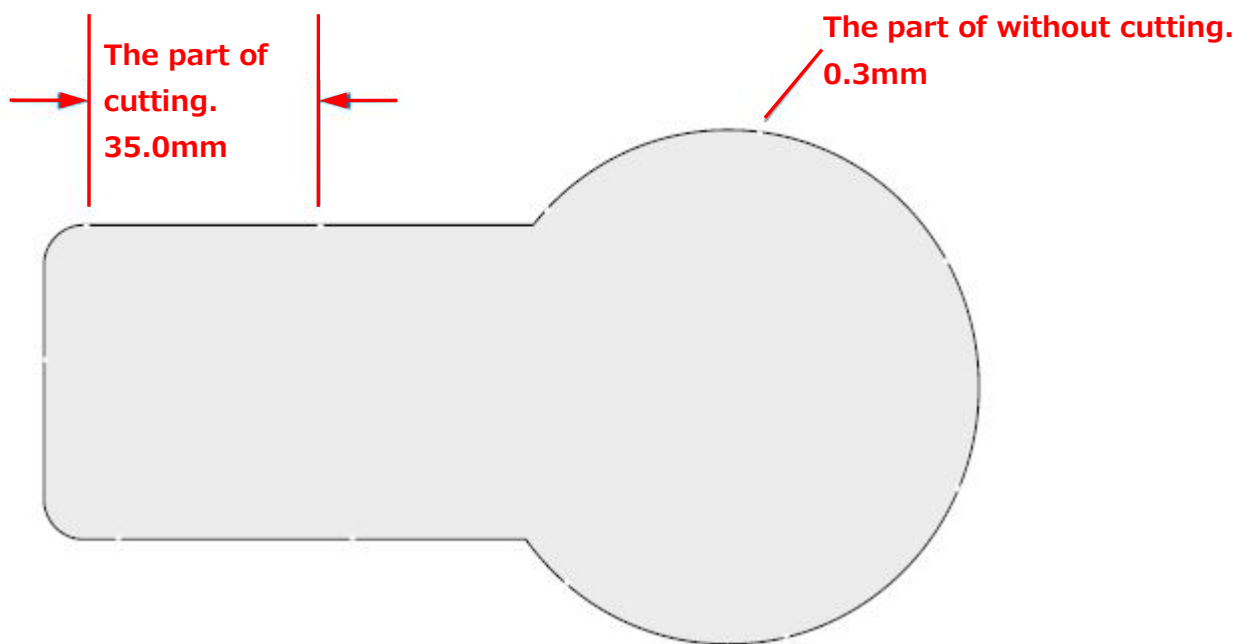
Attach

Speed

Cutforce

Pass

When 350(35mm) is inputted to the "Cut Length" and 3(3mm) is inputted to the "Attach", it will be cut as shown below



CAUTION:

If you have to cut thin cardboard, leave 3 cm or more between the Push Roller and the cut path so the remaining paper is strong enough to transmit the movement of the sheet.

Special Color panel

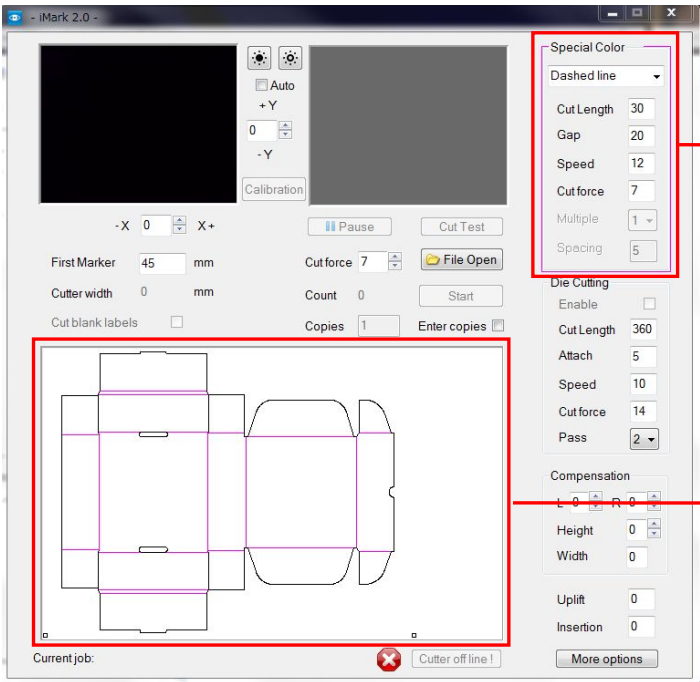
This function treats the line drawn with 100% magenta as a cut line separately from the normal line drawn with black.

The line drawn with 100% magenta can be operated as follow by "Special Color" function in the iMark software.

- The line drawn with 100% magenta is not influenced by position of the image, it can cuts before the normal line cuts which drawn with black.
- The line drawn with 100% magenta can be adjust the cut speed and cut force separately form the normal line drawn with black.

"Special Color" has the following three functions depending o the aprication.

1. Dashed line :Perforation cuts to lines which drawn with 100% magenta.
2. Plain cut :Half cuts (Kiss cuts) to lines which drawn with 100% magenta.
3. Blade creasing :Creasing cuts to lines which drawn with 100% magenta.



When importing the cut date included the lines wich drawn with 100% magenta into the iMark software, the "Special Color" function is active.

The lines which drawn with 100% magenta are displayed magenta even on the preview screen of iMark software

Special Color "Plain Cut": half cuts to magenta lines and black lines

This function is half cuts (kiss cut) to lines which drawn with 100% magenta and then half cuts to lines which drawn with black.

Speed :It can be set the cut speed when cutting to lines which drawn with 100% Magenta.

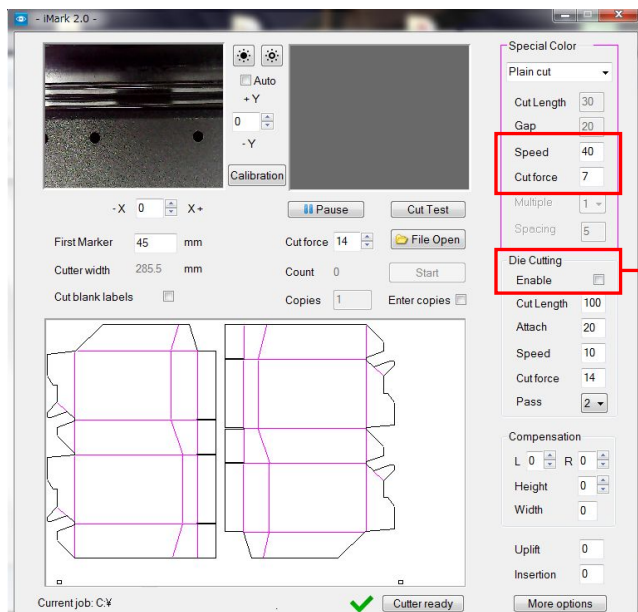
Setable values :1 to 60 [cm/sec].

Cut force :It can be set the cut force when cutting to lines which drawn with 100% Magenta.

NOTICE: Setable range of "Cut force" varies depending on the type of cutting plotter which connected to the F-Mark.

CE6000Plus :1 to 38.

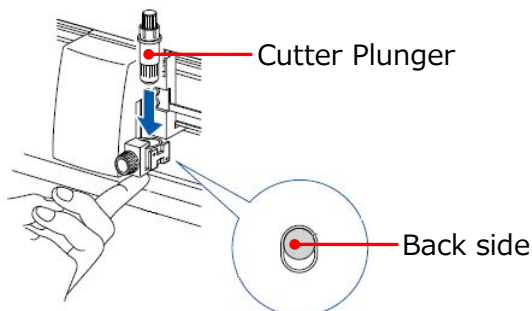
CE6000 :1 to 31.



Uncheck the "Enable" in the "Die Cutting".

NOTICE

- When uncheck the "Enable" in the "Die Cutting", half cut the lines which drawn with black.
- Install the Cutter Plunger on the back side.

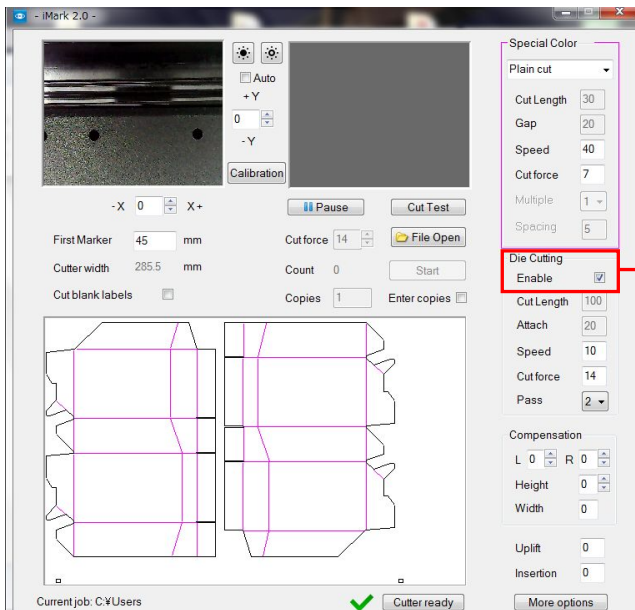


- For the how to set the Cutter Plunger to the Cutting Plotter CE6000 Plus, refer to the User's manual of CE6000Plus.

Special Color "Plain Cut": half cuts to magenta lines and perforation cuts to black lines

When wants to half cuts (Kiss cut) the lines which drawn with magenta and then Die cuts (perforation cut) the lines which drawn with black.

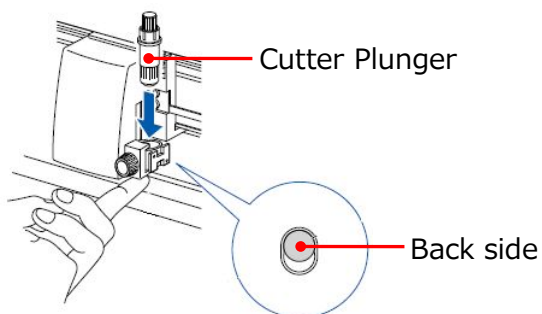
Please set the iMark software as follows.



Check the "Enable" in the "Die Cutting".

NOTICE

- When check the "Enable" in the "Die Cutting", Die cuts (perforation cut) the lines which drawn with black.
- Install the Cutter Plunger on the back side.



- For the how to set the Cutter Plunger to the Cutting Plotter CE6000 Plus, refer to the User's manual of CE6000Plus.

Special Color "Dashed line": perforation cuts to magenta lines and half cuts to black lines

This function is Die cuts (perforation cut) to lines which drawn with 100% magenta and then half cuts (kiss cut) to lines which drawn with black.

Cut Length : Length to cut with cutter.

Input units:0.1mm, Setable values:1 to 1000(0.1mm to 100mm).

Gap : Length to raise the cutter and leave it without cutting.

Input units:0.1mm, Setable values:1 to 100(0.1mm to 10mm).

Speed : It can be set the cut speed when cutting to lines which drawn with 100% Magenta.

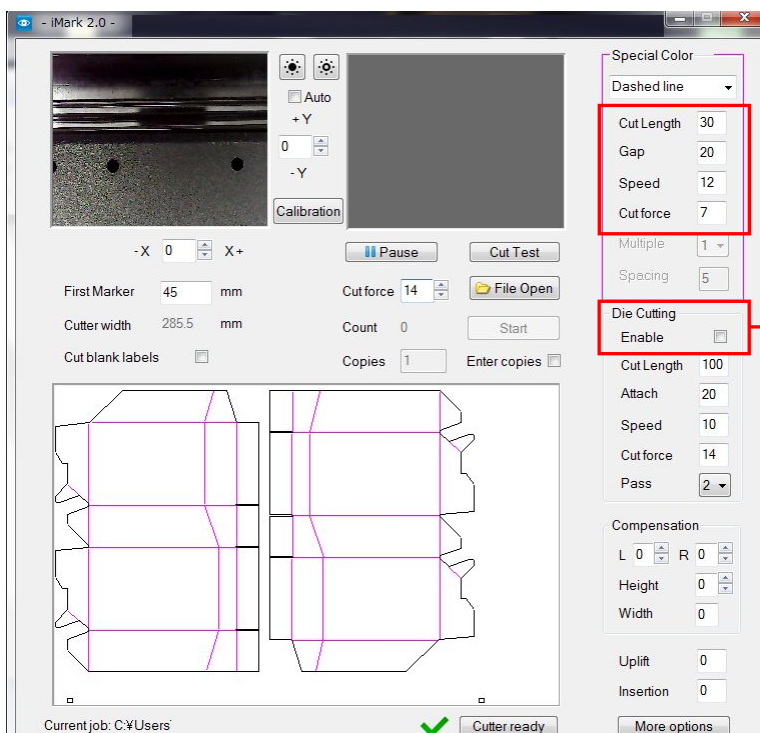
Setable values :1 to 60 [cm/sec].

Cut force : It can be set the cut force when cutting to lines which drawn with 100% Magenta.

NOTICE: Setable range of "Cut force" varies depending on the type of cutting plotter which connected to the F-Mark.

CE6000Plus :1 to 38.

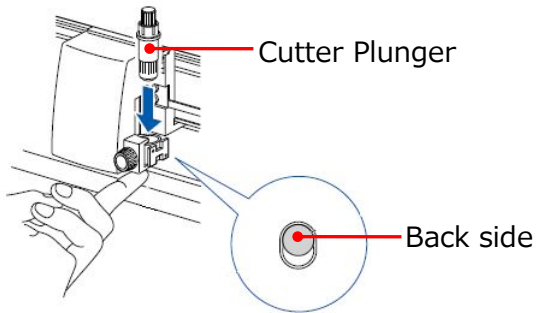
CE6000 :1 to 31.



Uncheck the "Enable" in the "Die Cutting".

NOTICE

- When uncheck the “Enable” in the “Die Cutting”, Die cuts (perforation cuts) the lines which drawn with black.
- Install the Cutter Plunger on the back side.

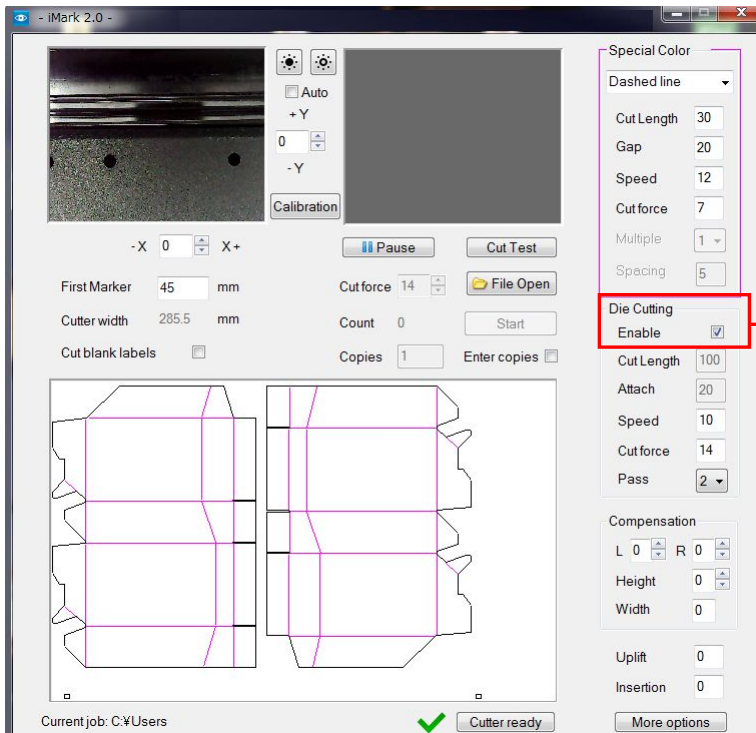


- For the how to set the Cutter Plunger to the Cutting Plotter CE6000 Plus, refer to the User’s manual of CE6000Plus.

Special Color "Dashed line":perforation cuts to magenta lines and black lines

When wants to Die cuts (perforation cut) the lines which drawn with magenta and then Die cuts (perforation cut) the lines which drawn with black.

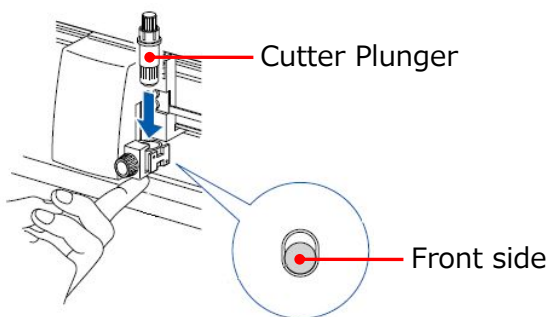
Please set the iMark software as follows.



Check the "Enable" in the "Die Cutting".

NOTICE

- When check the "Enable" in the "Die Cutting", Die cuts (perforation cuts) the lines which drawn with black.
- Install the Cutter Plunger on the front side.



- For the how to set the Cutter Plunger to the Cutting Plotter CE6000 Plus, refer to the User's manual of CE6000Plus.

Special Color "Blade Creasing"

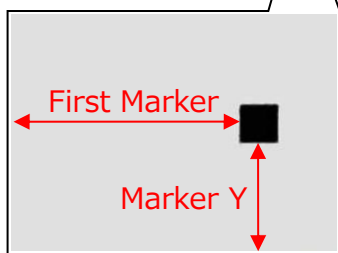
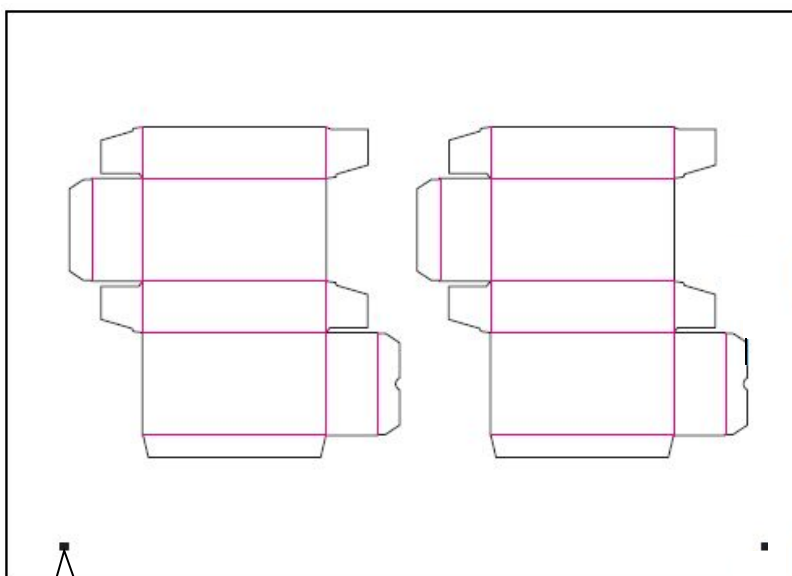
Using this technique you can simulate the creasing using multiple parallel press of the blade at reduced force.

The blade creasing is carried on the back of the print, the means the that the camera does not read the crop marks but it detects the border and the corner of the sheet.

For this reason you have to measure with a rule the distances of the first marker from the border and the bottom of the sheet.

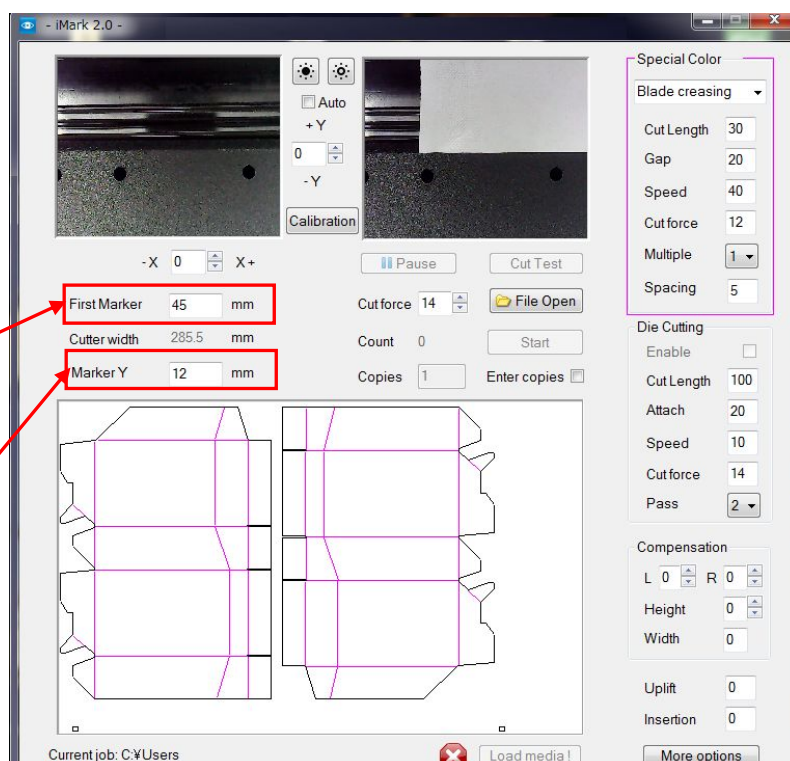
You have to measure only once the distance, this technique works well with the last generation of digital printers, very accurate for the print position on the sheet.

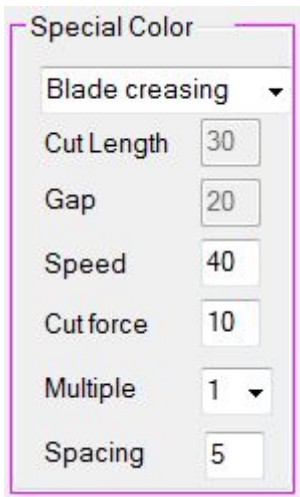
The accuracy depends on the repeatability of the position of the print on the sheets, you can reach a value around 1 mm then the graphics have to be designed accordingly.



First Marker
Input the distance from the front edge of the media to the crop mark.
The input units is mm

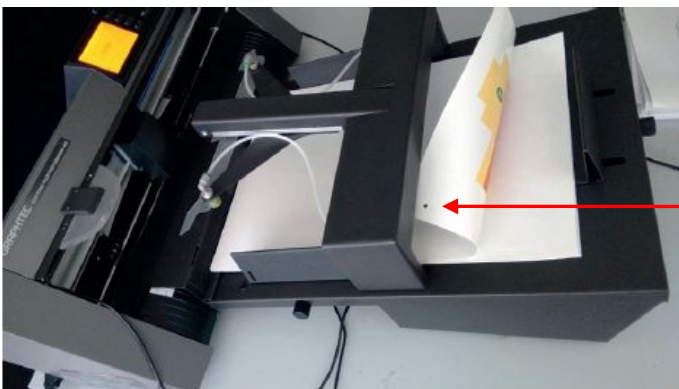
Marker Y
Input the distance from the bottom of the media to the crop mark.
The input units is mm.





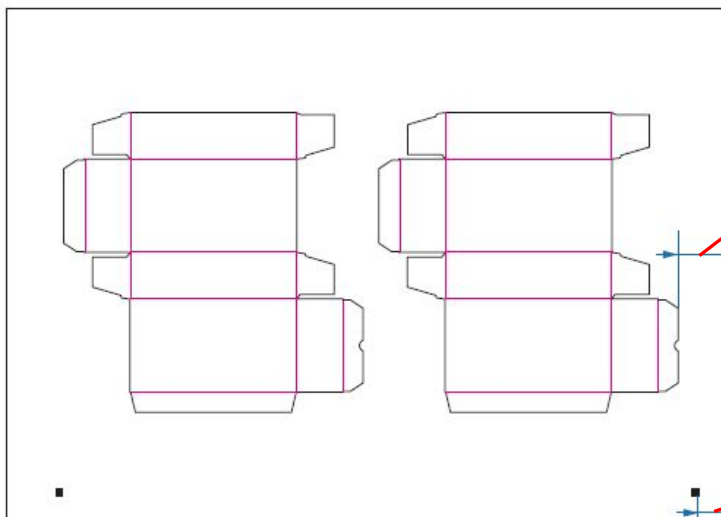
- Speed** :It can be set the cut speed when cutting to lines which drawn with 100% Magenta.
Setable values :1 to 60 [cm/sec].
- Cut force** :It can be set the cut force when cutting to lines which drawn with 100% Magenta.
NOTICE: Setable range of "Cut force" varies depending on the type of cutting plotter which connected to the F-Mark.
CE6000Plus :1 to 38.
CE6000 :1 to 31.
- Multiple** :It can be set the number of times to repeat the "Blade creasing" cut.
Setable values :1 to 5
- Spacing** :It can be set the spacing between the cut lines when repeating the "Blade creasing" cut.
Input units :0.1mm
Satable values :1 to 20 (0.1mm to 2mm)

How to loading the media into the F-Mark at "Blade Creasing" mode.



You have to load the sheet with the print face down.
 Pay attention to place the side with the crop marks on the camera side.

Cutting area at the "Blade Creasing" mode.



The minimum distance of the cut path from the right border is **25mm**

The distance of the crop mark to the right border **must be 20mm** or less

Mechanical movements

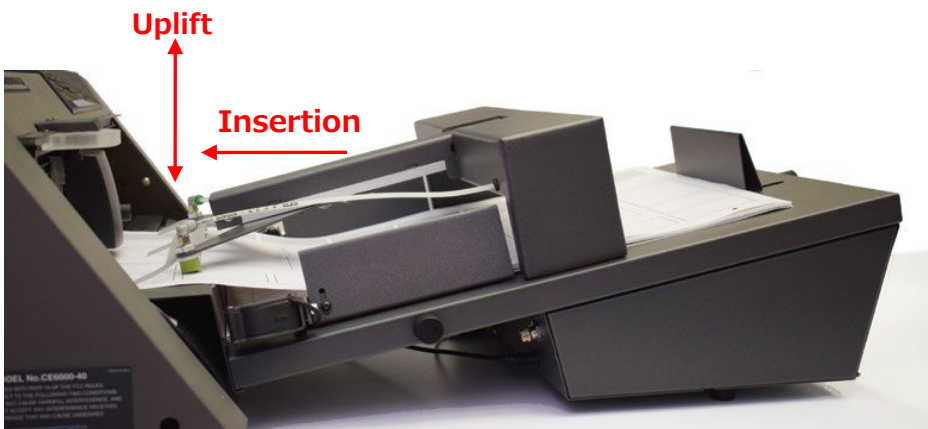
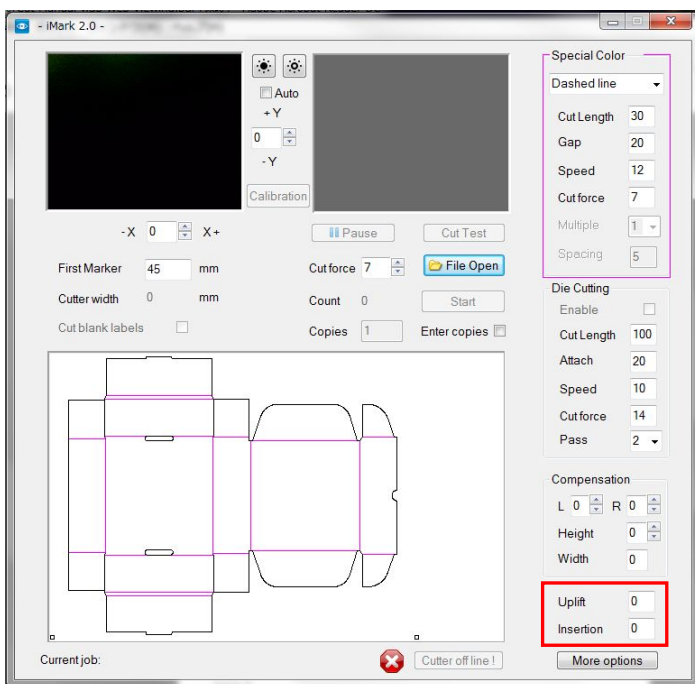
On the right bottom corner of the software window there are two settings for controlling the movement of the insertion arm.

Uplift :Controls the height of the arm when inserting the sheet.
If media dorps by hitting the edge of "Cutting Mat" or "Grooved of cut" of the CE6000Plus, increase the Uplift value of iMark software to that the media dose not hit the edge of "Cutting Mat" or "Groove of cut" of the CE6000Plus.

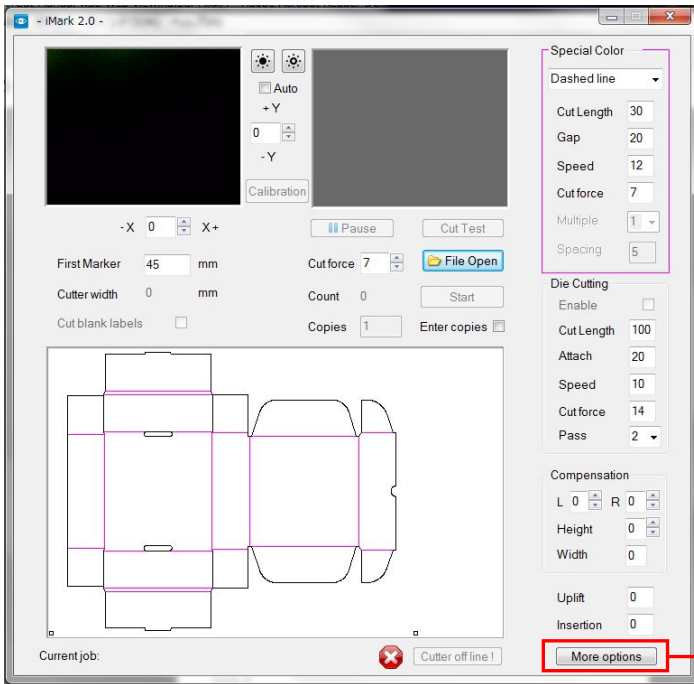
Input units:0.1mm, Setable values:-100 to 100(-10mm to 10mm).

Insertion :Control how much the suction cups have to push the sheet into the plotter.
If the insertion value is not enough, the media does not reach to Push Roller of CE6000Plus. And if insertion value is too much, the media will be distorted and load into the CE6000Plus, and result of cutting may not be properly.

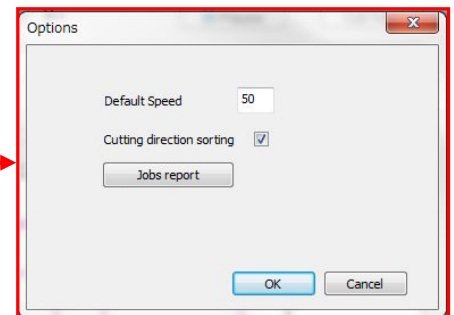
Input units:0.1mm, Setable values:-100 to 155(-10mm to 15.5mm).



More options



When click "More options" button, the "Options" window opens.

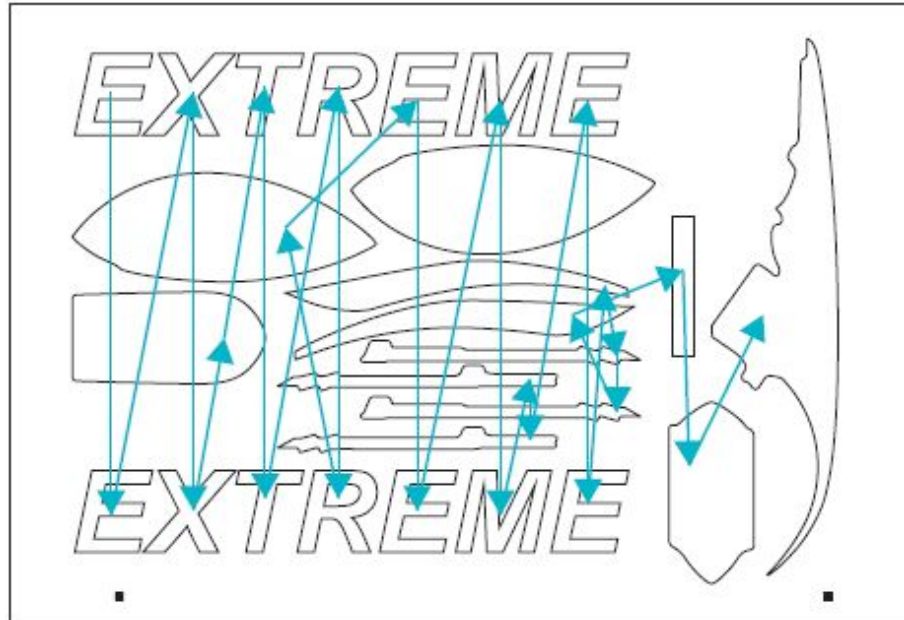


"More options" button can be set following parameters.

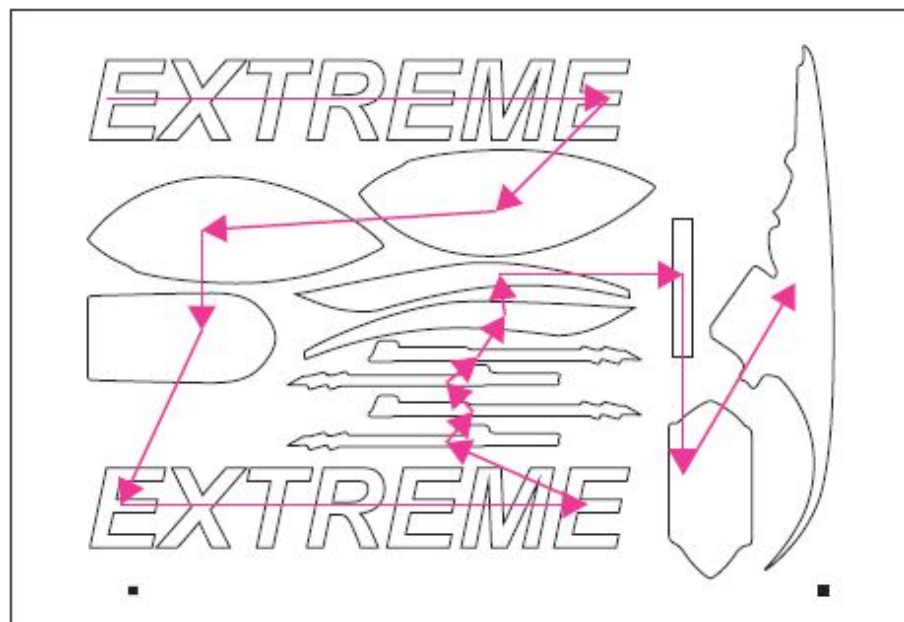
Default Speed :It can be set cut speed at "Plain cut".
Setable values:1 to 60 [cm/sec].

Cutting direction sorting:It can be change the order of cutting.

When “Cutting direction sorting” is checked, the order of cutting is automatically adjusted so that the moving distance becomes shorter as shown below figure.



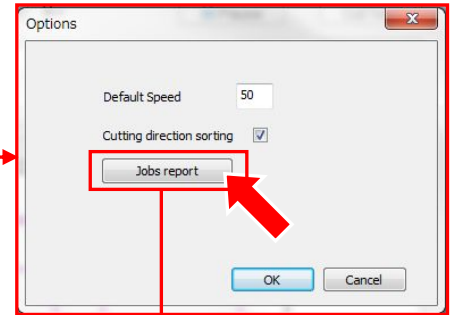
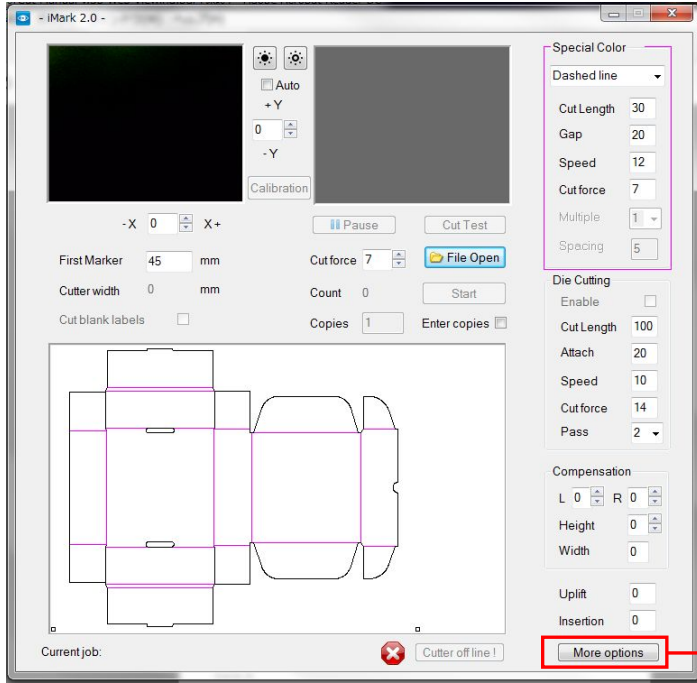
When “Cutting direction sorting” is unchecked, the order of cutting is reversed order of drawing order of cut data as shown below figure.



Jobs report

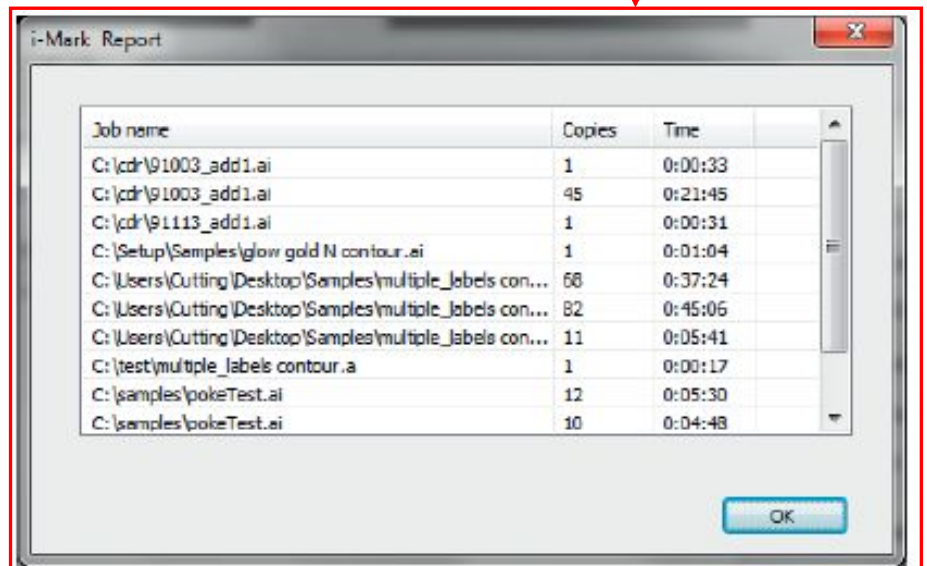
: The history list of jobs are displayed.

Jobs displayed in the history list is only the jobs which executed by "Start" button. The Jobs which executed by "Cut Test" button are not displayed in this list.



Click "Jobs report" button, history list of jobs are displayed.

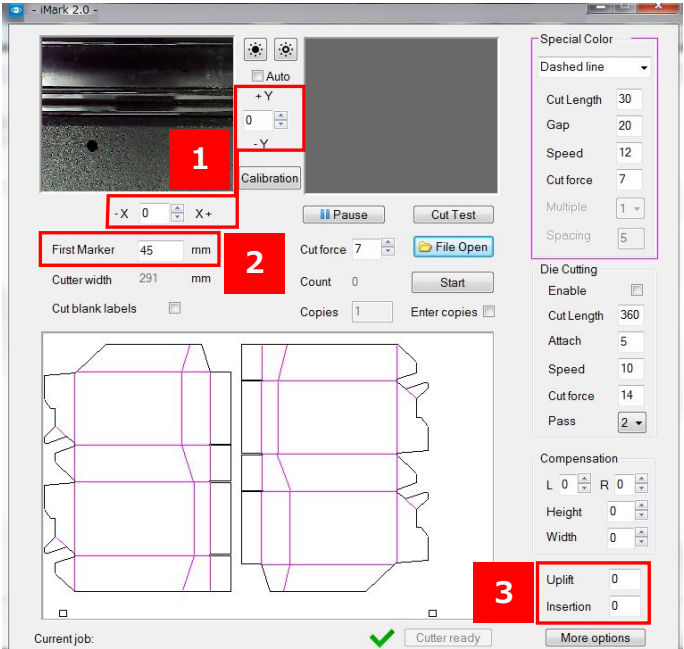
- Job name: Directory of job.
- Copies: Number of copy
- Time: Time spent for cutting. are displayed.



Setting to save the parameter values of the iMark software

The input values of each parameter in the iMark software are classified into “to be Saved”, “Saved for each file name”, and “Not Saved” according to parameter.

1.Parameters which inputted values are saved.



1.Parameters for adjustment for cutting position. The inputted values are saved after pressing the “Start” button.

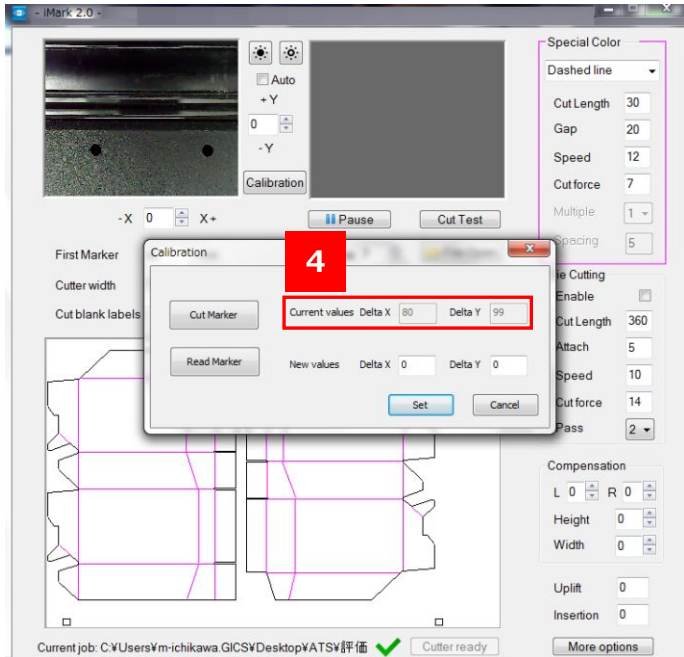
When press the “Start” button, the display of inputted values are reset to zero.

2.First Marker

The inputted value is saved after pressing the “Start” button.

3.Uplift / Insertion

The inputted values are saved after inputted.



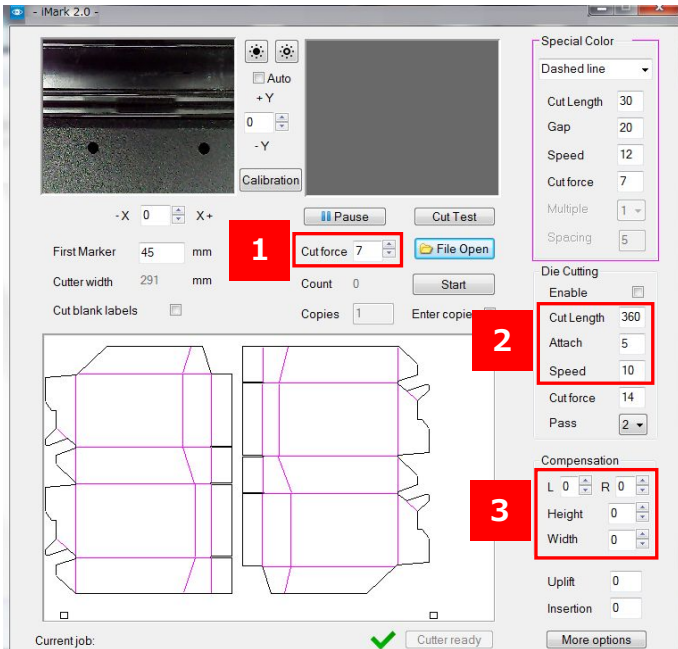
4.Parameter for calibration result, Current values Delta X / Delta Y.

These values are saved after calibration, however, when press the “Start” button after inputting the values in the “Adjustment of cutting position”, the values of Delta X and Delta Y will be increased or decreased depending the inputted values in the “Adjustment of cutting position”.

2.Parameters which inputted values are saved for each file names.

NOTICE:The inputted values are saved for each file name.

If the same file name used, the inputted values are saved as same file even if the image date in the file is different.



1.Cut force.

Inputted value is saved for each file name after press the "Start" button.

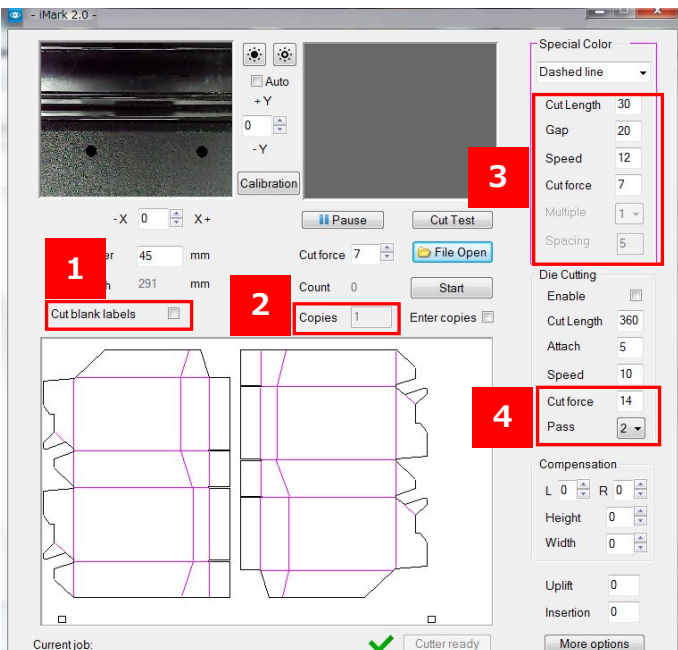
2.Cut Length / Attach / Speed in the Die Cutting.

Inputted values are saved for each file name after press the "Start" button.

3.L / R / Height / Width in the Compensation.

Inputted values are saved for each file name after press the "Start" button.

3.Parameters which inputted values are not saved.



1.Cut blank labels

The inputted value is not saved.

2.Copies

The inputted value is not saved.

3.Cut Length / Gap /Speed / Cut force / Multiple / Spacing in the Special Color.

The inputted values are not saved.

4.Cut force / Pass in the Die Cutting.

The inputted values are not saved.