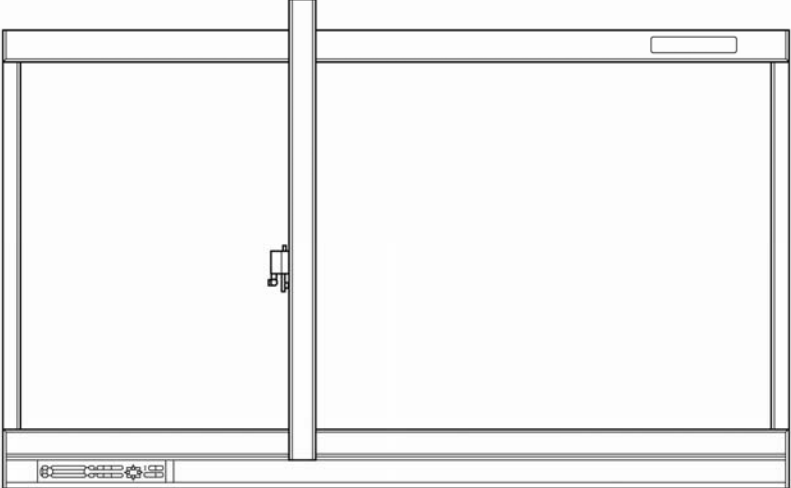
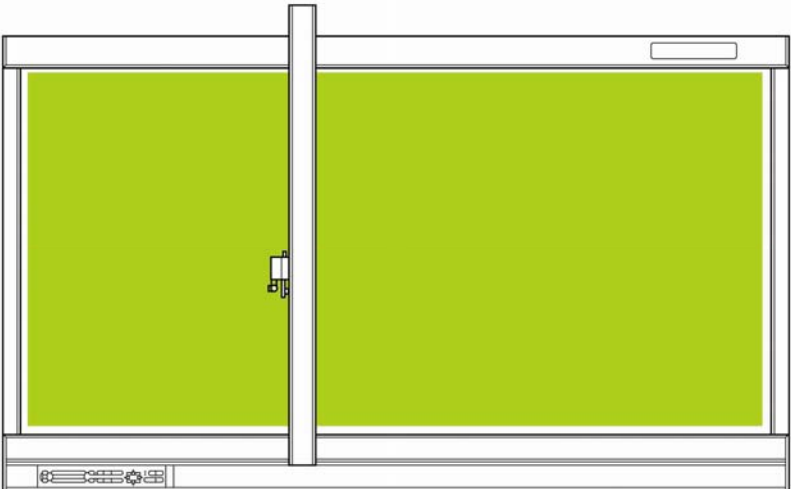
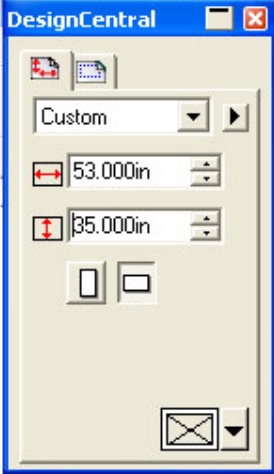
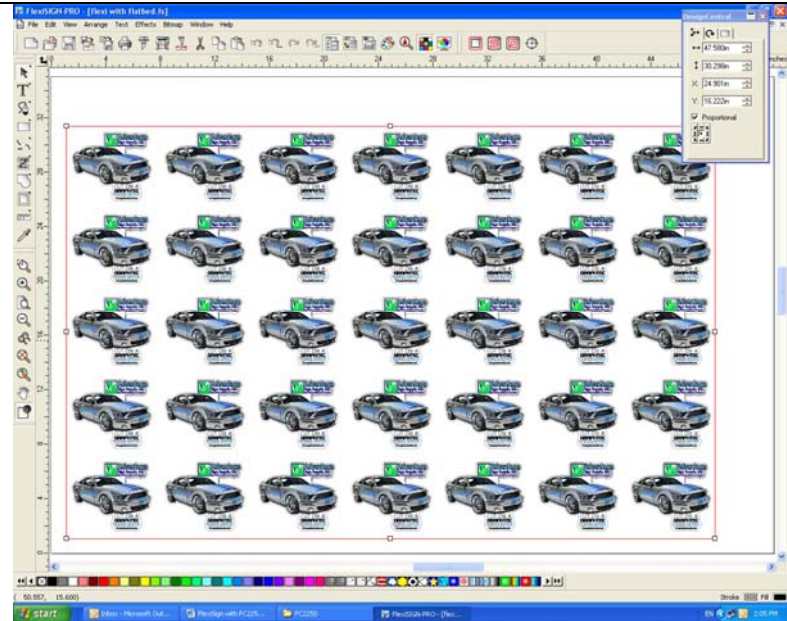


## FlexiSign Pro contour cutting with Graphtec FC2250 series cutter

<p>Graphtec FC2250 series flatbed 3 sizes:</p> <table><thead><tr><th></th><th>H</th><th>W</th></tr></thead><tbody><tr><td>FC2250-60:</td><td>36"</td><td>24"</td></tr><tr><td>FC2250-120</td><td>36"</td><td>47"</td></tr><tr><td>FC2250-180</td><td>36"</td><td>68"</td></tr></tbody></table> <p>Same orientation, only X which is the width differs</p>		H	W	FC2250-60:	36"	24"	FC2250-120	36"	47"	FC2250-180	36"	68"	
	H	W											
FC2250-60:	36"	24"											
FC2250-120	36"	47"											
FC2250-180	36"	68"											
<p>With reg. marks, max. H and W is minus 1" smaller for print and cut.</p> <p>For example, FC2250-180 is at 35" x 67" max printing/cutting area.</p>													
<p>With media at 54" wide, the Flexi file setup should be 35" x 53"</p>													

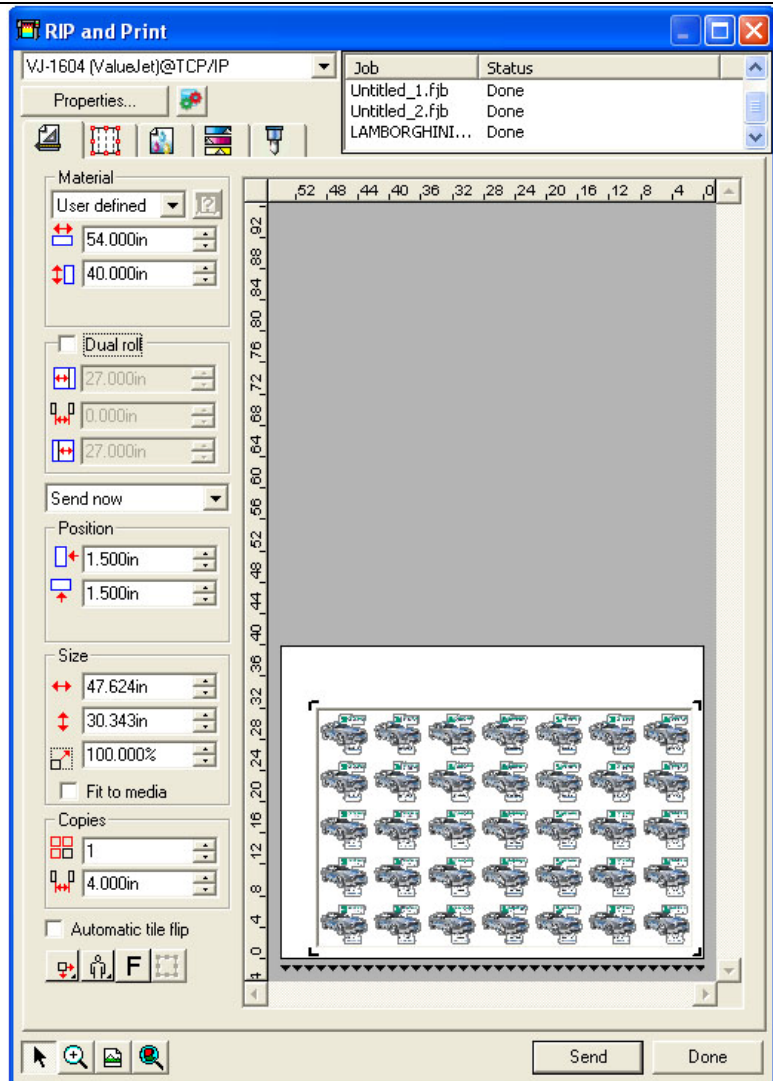
After finish the layout, create a rectangle larger than the designs and use it as place holder, don't assign color to it.

The idea is to keep all elements within the rectangle so when rotate the layout the reg. marks will be in the same position before the rotation.

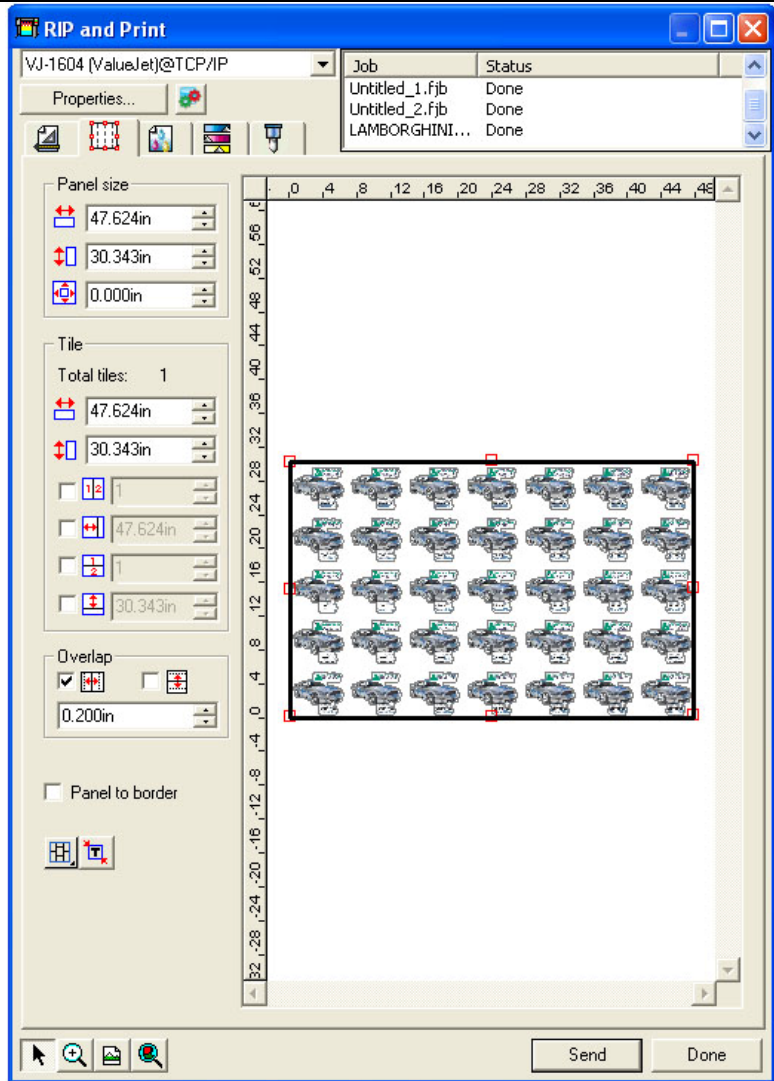


Set user defined media size to 54" x 40" or longer so the wider side will print out first on the 54" media, to fully utilize the media.

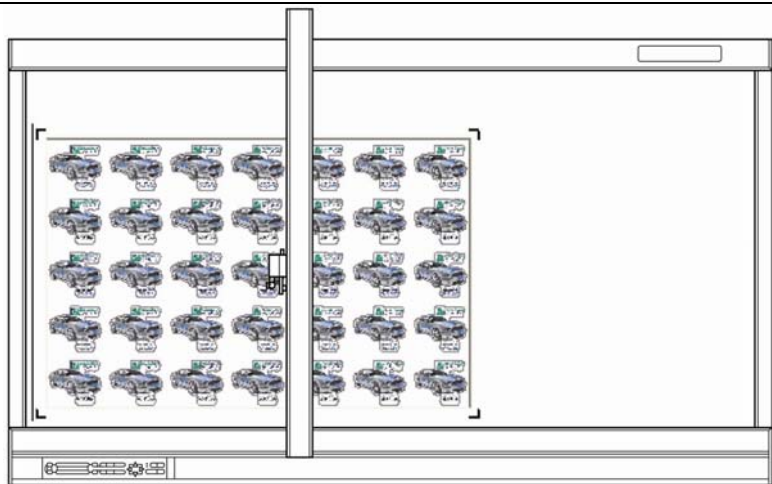
Enter 1.5" for both X and Y for Position to give clearance for pinch roller wheels.



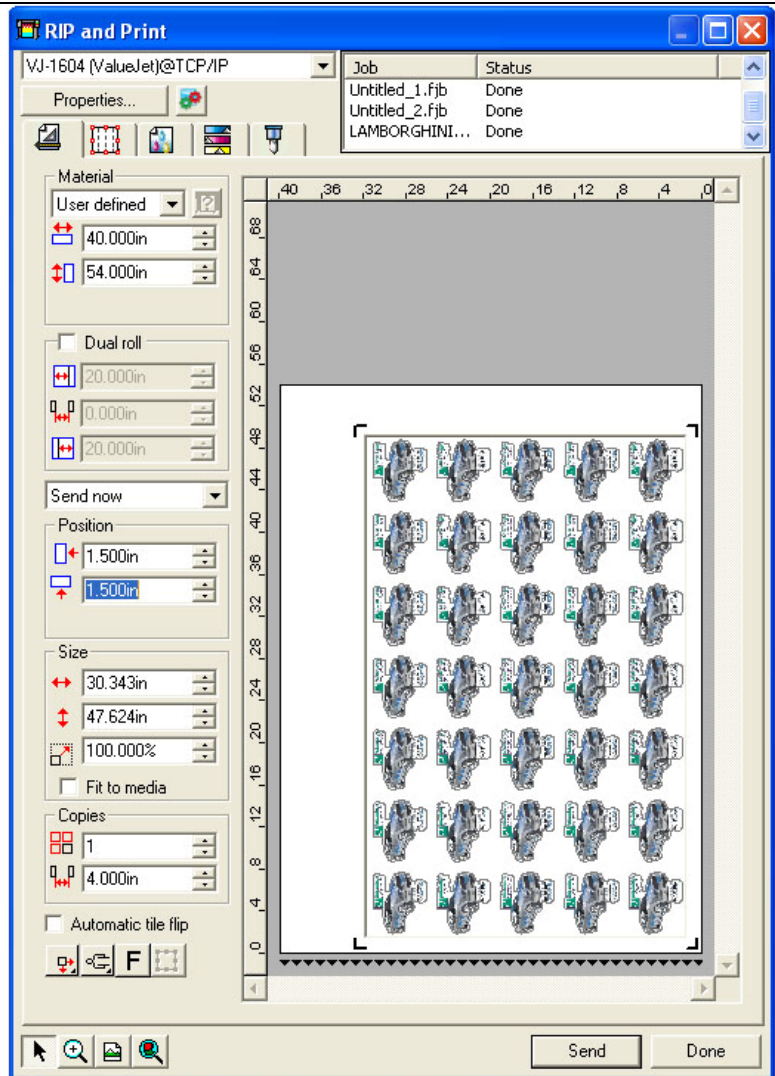
For panel margin enter 0” so the marks will be closer to the graphics since we have the rectangle around the graphics.



Print out and position the print on the table in the landscape orientation.



Change user define media size to 40" x 54" and rotate CC 90, enter 1.5" for X and Y Position..



Send contour job only and here is the preview with the correct orientation for cutting,

