

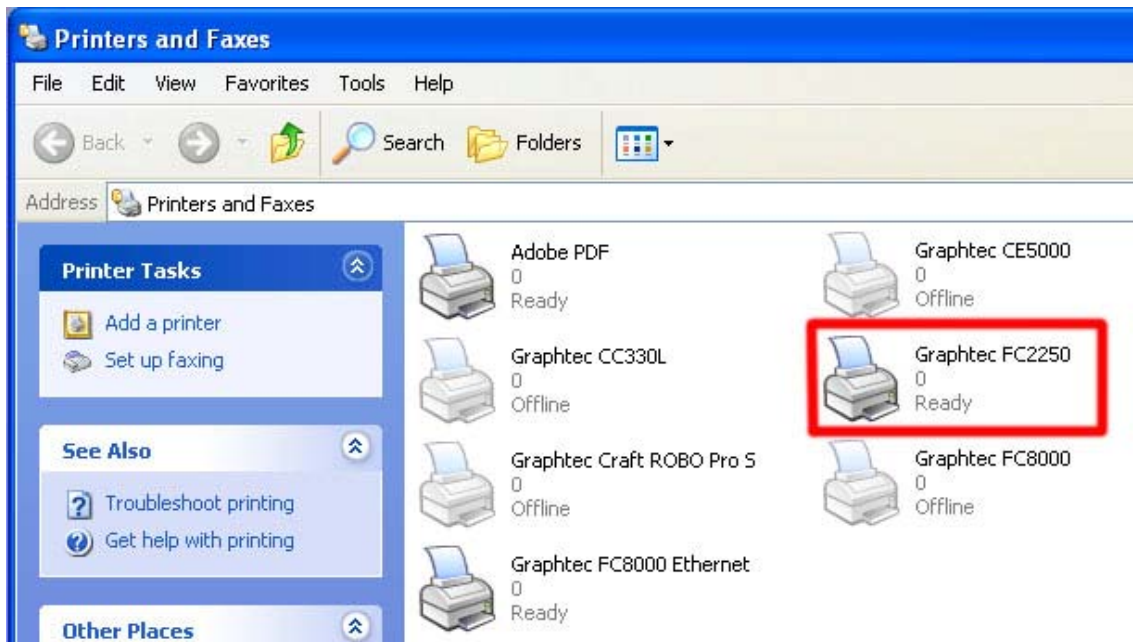
Graphtec FC2250 Interfacing with Onyx

The following serves as a general guideline in referencing Onyx RIP with the FC2250 flatbed cutter, file setup is done with Illustrator in this write up. As of this writing, Onyx is supporting Graphtec FC2250 via its FC7000 driver, we will update the info as Onyx releases the native FC2250 driver. This procedure works for all FC7000's, FC8000's, FC2250's

In this write up, we added Onyx using the new perfcut and kisscut feature, Oxyx ProductionHouse 10.1 is used with Onyx 10.1 Cutter Patch.

1. Download and install the 32-bit or 64-bit driver for Graphtec FC2250 from our web site, click on the corresponding model to download the correct driver for your unit.

<http://www.graphtecamerica.com/support/>



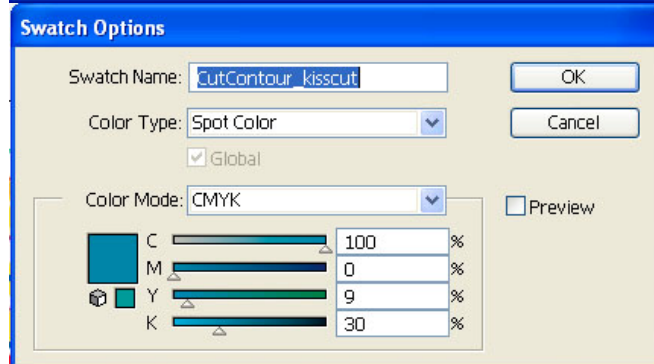
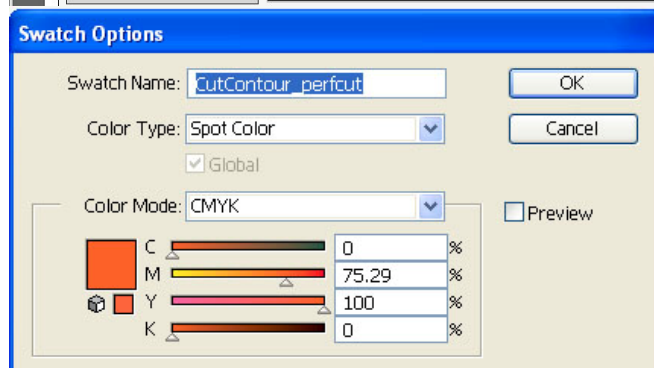
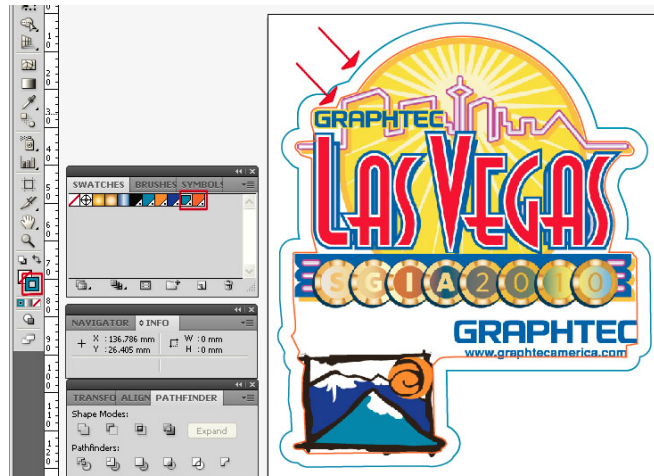
2. while FC2250 is in **READY** mode, press **Pause >> Next >> Next >> I/F >> Command >> HP-GL >> DOWN** arrow to set **Origin Point** to **Lower Left** or **L.L.** >> **Enter**.

3. Assign color to the outline (indicated by **red arrow**), drag and drop the **stroke color** (1st **red box**) to the **Color Swatch** (2nd **red box**). Pick the outer line for perfcut, the inner line for kisscut

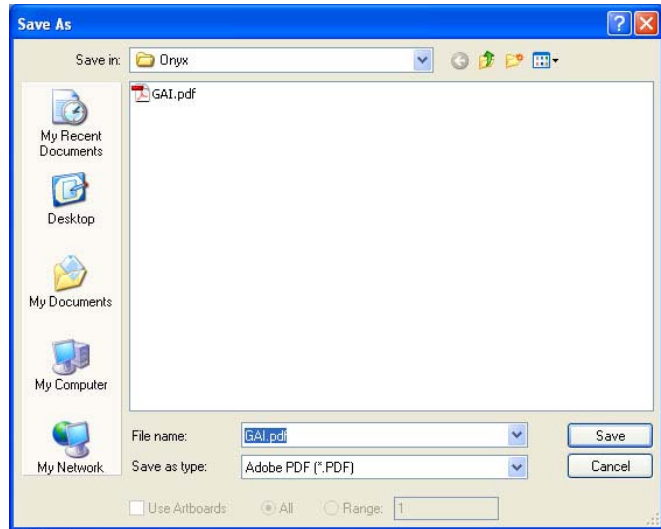
Double click on the 2nd **red box** to continue.

4. choose Color Type to **Spot Color**, set Swatch Name to **CutContour_perfcut**, click **Ok** to continue.

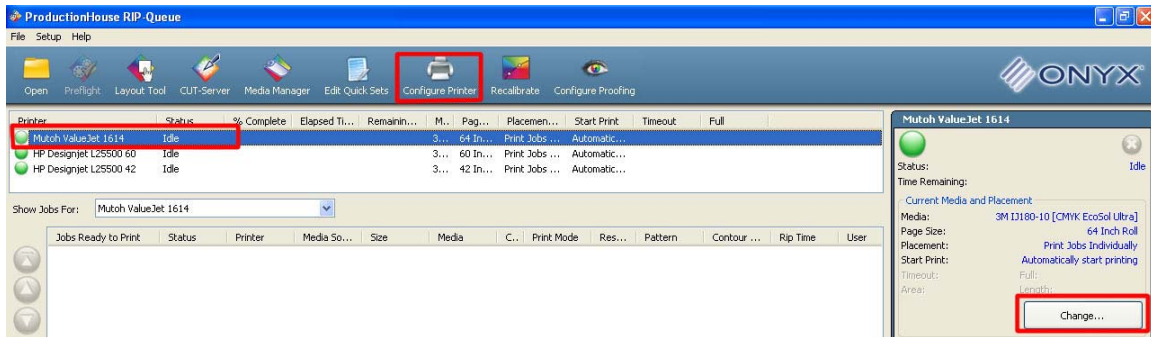
Repeat step 3, pick the inner line, repeat step 4, name it **CutContour_kisscut**, click **Ok** to continue.



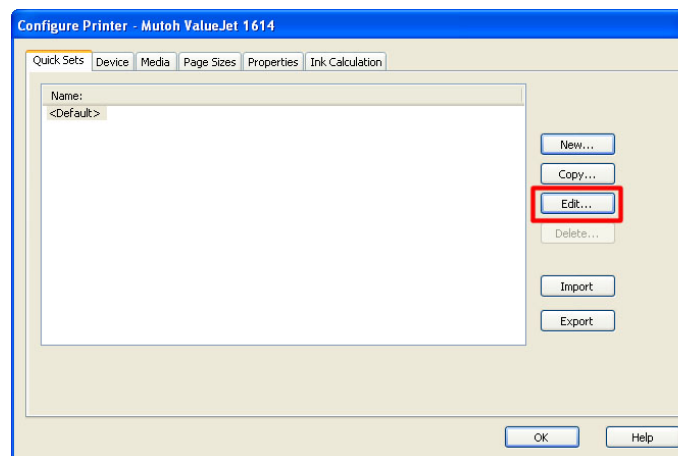
5. Save the file as **.pdf** or **.eps** as you prefer.



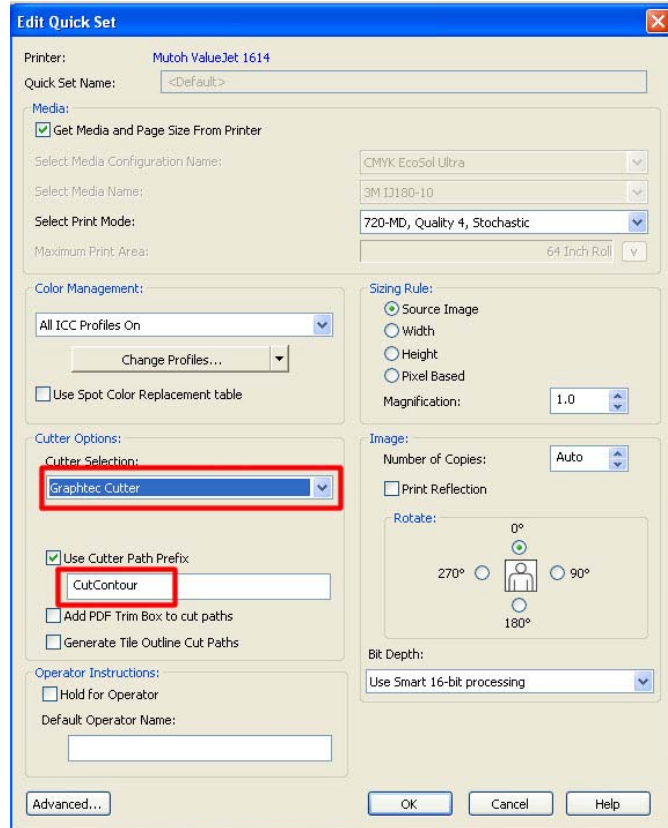
6. Select the printer model then click on **Configure Printer** on top tool bar.



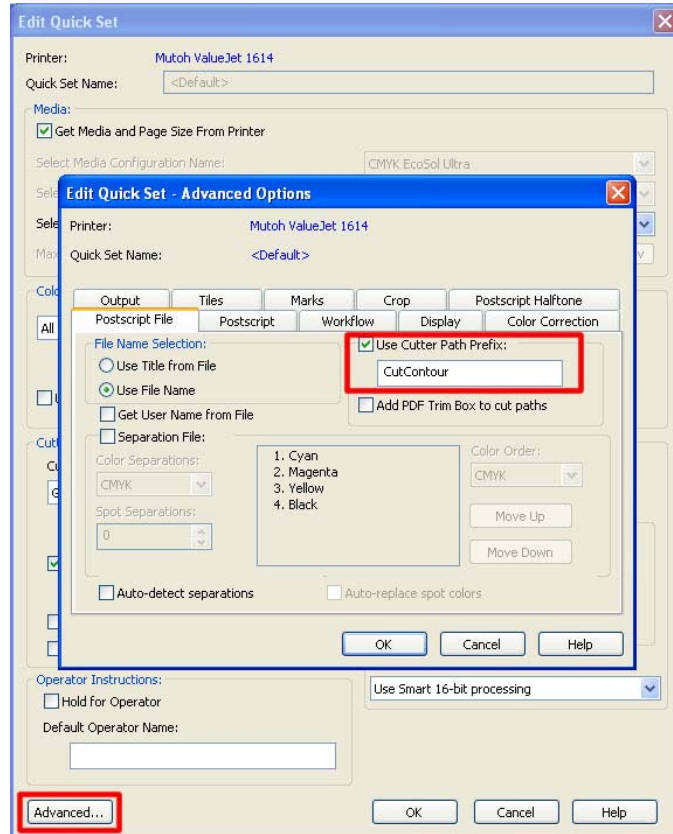
7. Click on **Quick Sets** >> Select your quick set >> **Edit**.



8. Set Cutter Selection to **Graphtec** >> Check Use Cutter Path Prefix to >> **CutContour**.

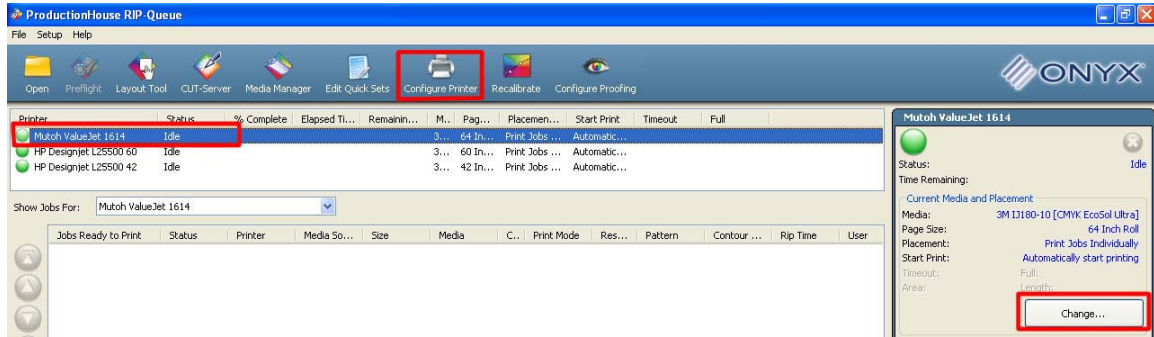


9. Click on **Advanced** >> **PostScript File** >> check Use Cutter Path Prefix >> **Cutcontour**.

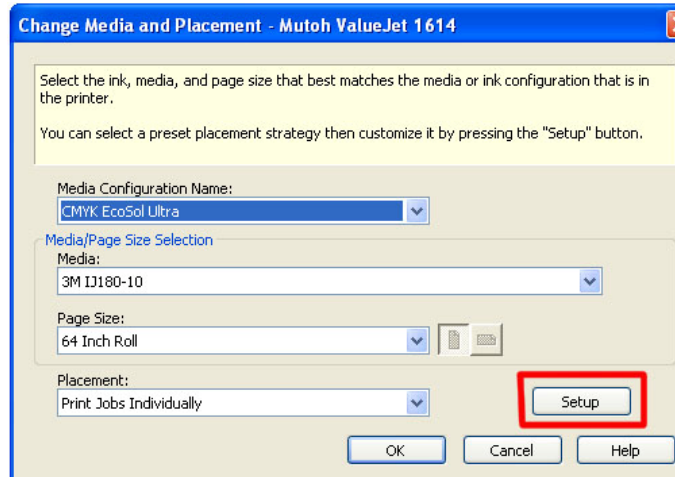


10. Click on **OK >> OK >> OK** to exit.

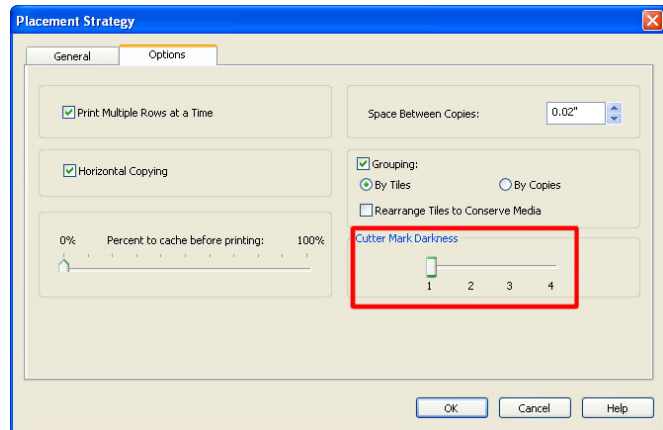
11. Select printer model, click on Change... to the right.



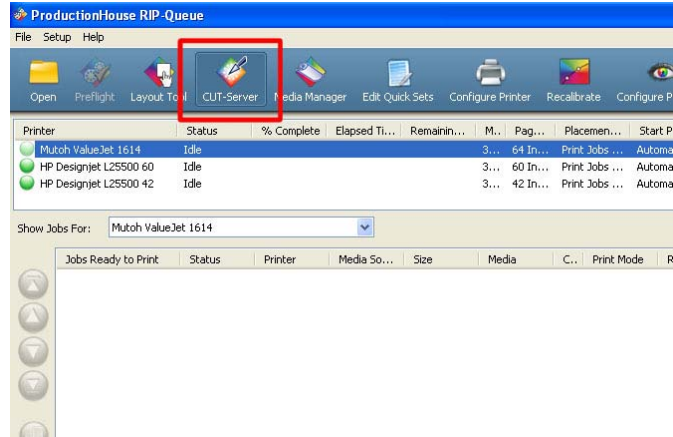
12. Click on **Setup**.



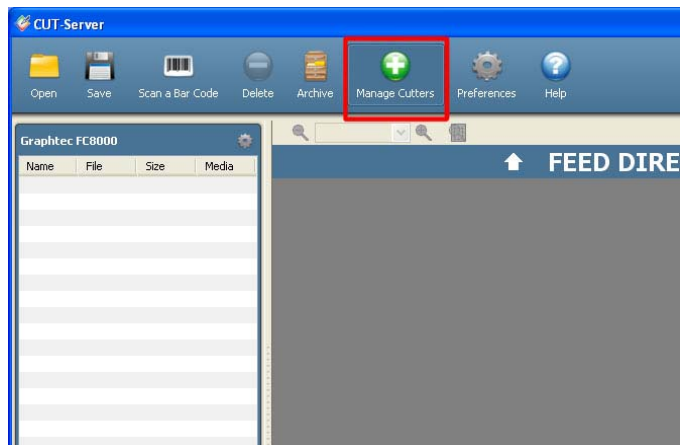
13. Click on **Options** >> set Cutter Mark Darkness to **2** or higher if using laminate >> **OK >> OK** to exit.



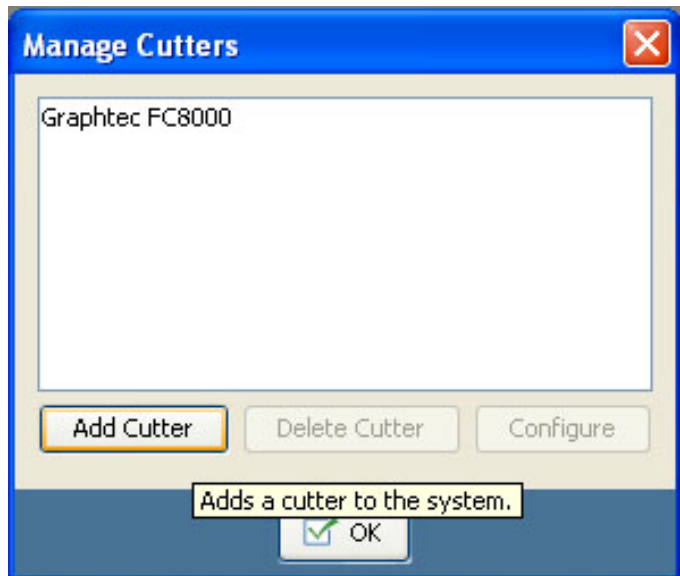
14. Click on **Cut Server**.



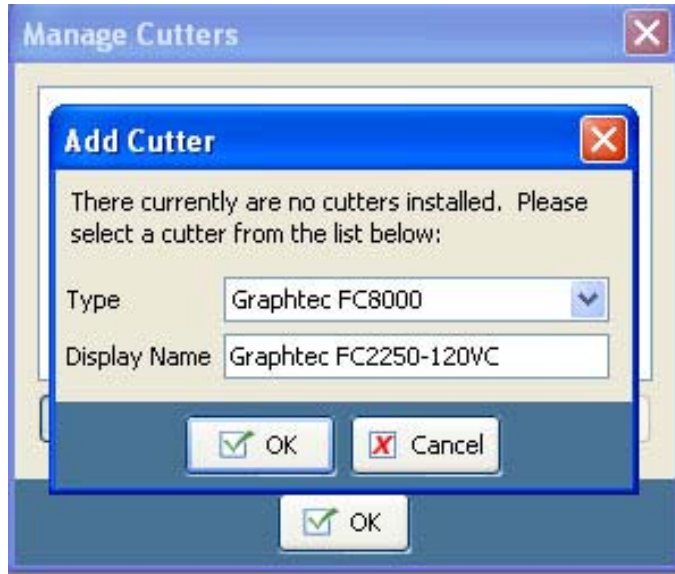
15. Click on **Manage**.



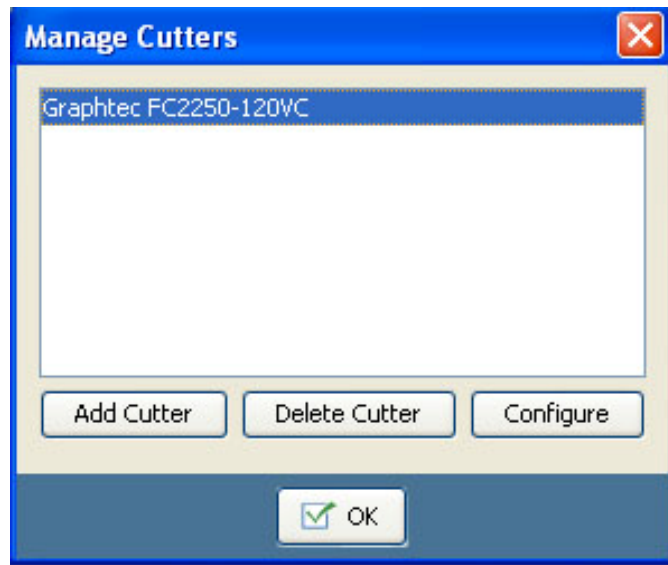
16. Click on **Add Cutter**.



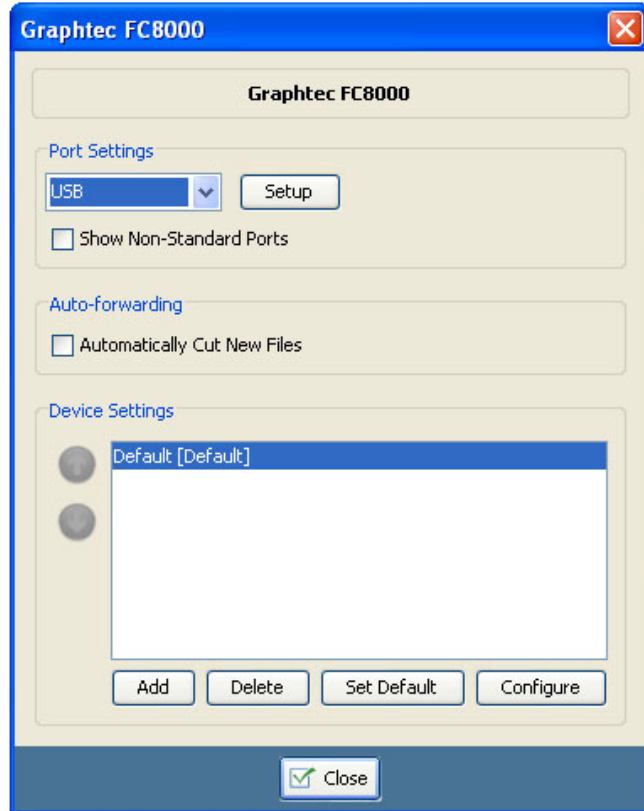
17. Change Type to **Graphtec FC8000**, change Display Name to **Graphtec FC2250 – 60VC**, or **120VC**, or **180VC**. Click **OK** to continue.



18. Click on **Configure**.

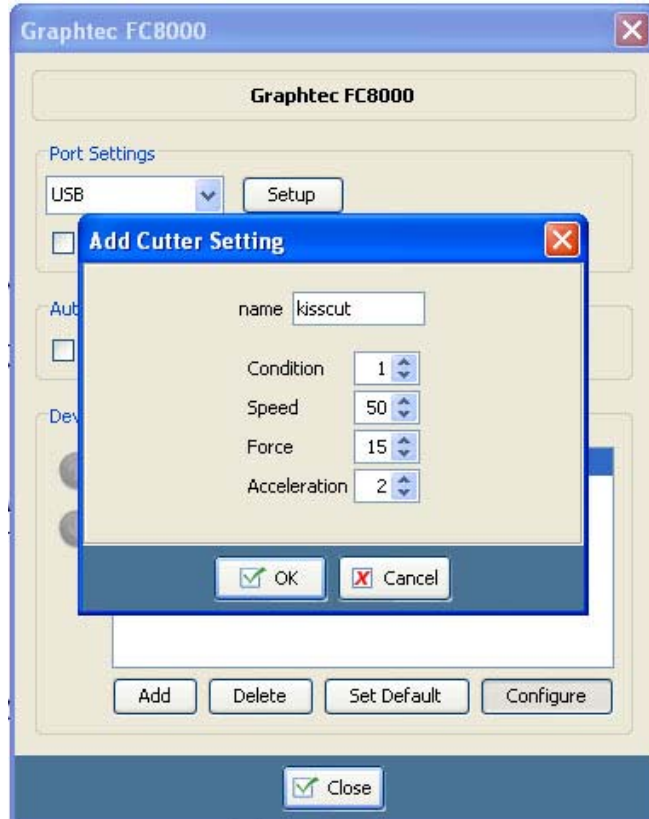


19. Port Settings >> choose **USB**. Click on Default [Default] >> **Configure**.



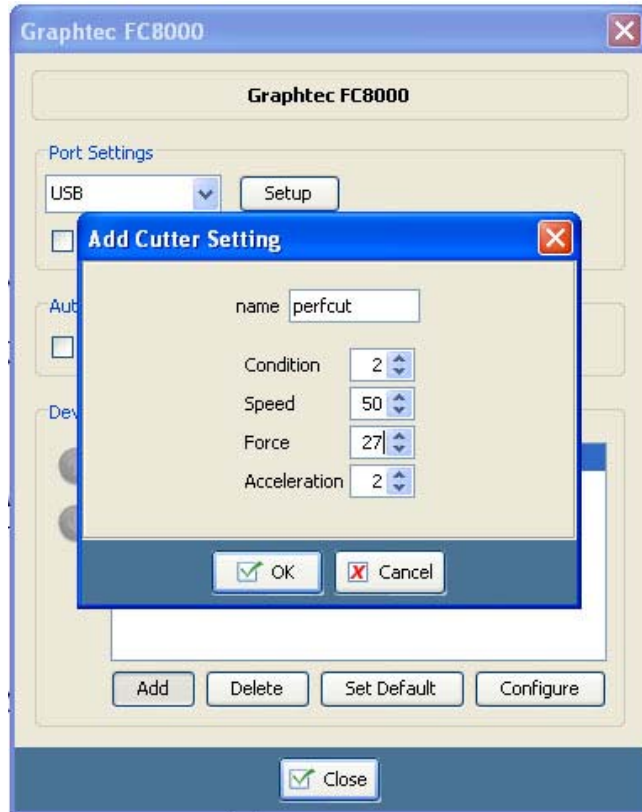
20. Change name to **kisscut**, set the other parameters as showing. Click **OK** to continue.

Force set to 15 is for typical printable vinyl material, Perform a test cut on the Graphtec just to be sure.



21. Change name to **perfcut**, set the other parameters as shown. Click **OK** to continue.

Force set to 25+ is for typical printable vinyl material cutting through, With laminated prints, force has to be higher. Perform a test cut on the Graphtec just to be sure.

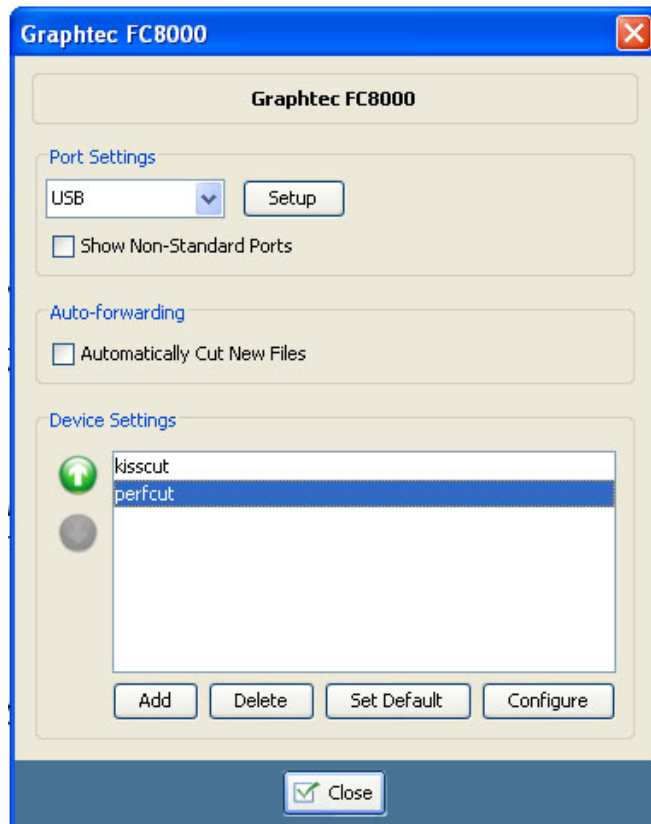


22. Both **kisscut** and **perfcut** has been defined on the Cut Server. Click **Close** >> **OK** to exit.

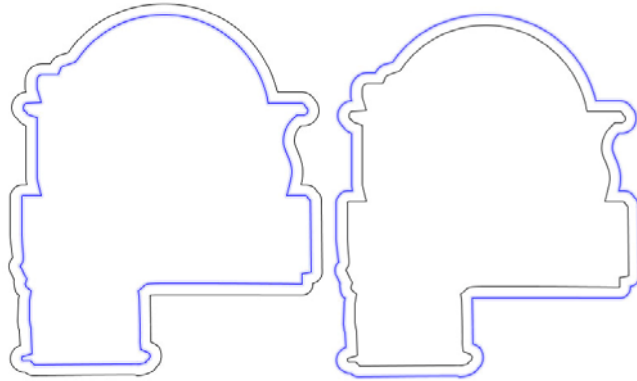
Note for FC800 users:

On FC8000 series while in Ready mode, press Enter + 2 to switch to Condition 2. Press Condition >> DOWN arrow >> DOWN arrow >> Cut Line Pattern >> 2 >> UP or DOWN arrow to set to 7 >> Enter >> Menu to exit.

From this point on, any job send to condition 2 will be perfcut.

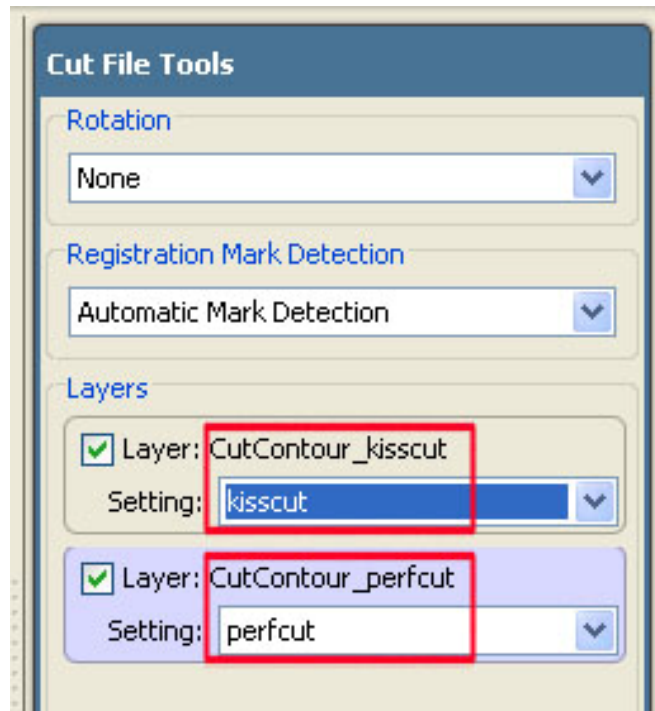


23. Within CutServer, click on the inner line first, noticed the left image has the kisscut line selected, the one on the right has the perfcut line selected.



24. Within CutServer, click **Layers >> Setting >>** set to **kisscut**.

Click the outer line, under **Layers >> Setting >>** set to **perfcut**.



25. Click on **Cut Now** to start contour cutting.

Note for FC8000 customers:

On FC8000 series, position the print in the same orientation as indicated by the arrows, leave minimum half inch gap between the outer wheels to the reg. marks, leave no more than 6" blank to the beginning point – the bottom right-hand corner of the print, and choose Roll 2 on the Graphtec after locking the lever.