

Attaching a Tool (blade holder)

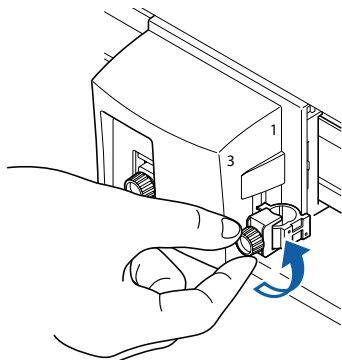
Two tool holder

When mounting the tool in the **tool holder**, push the tool all the way into the holder—until the tool's **flange** contacts the top part of the holder. Tighten the screw firmly only after the tool's **flange** is seated flat on top of the holder.

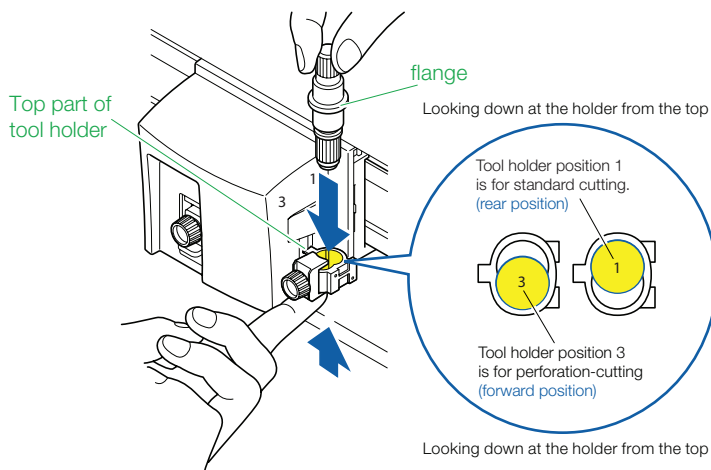
To prevent injury, avoid touching the tool immediately after the cutting plotter is turned on, or whenever the machine is in motion.

Operation

- 1 Loosen the tool holder screw.



- 2 While pushing the **tool holder** (from underneath the screw) in the upward direction, push the tool all the way into the holder until its **flange** sits flush on the top part of the holder.



CAUTION

When pushing the tool holder with your fingers, the blade tip may be exposed—take care not to cut yourself.

Supplement

- The forward position (**3**) of the tool is used for **perforation-cutting ONLY**, and the rear position (1) is used for standard kiss-cutting.
- Perforation-cutting means that the media is cut out completely through the backing.
- Kiss-cutting means that only the marking film is cut out, leaving the backing sheet uncut.
- See "What is Cutting Plotter?" in Setup Manual for structure of the marking film.