



ONYX Workflow Products

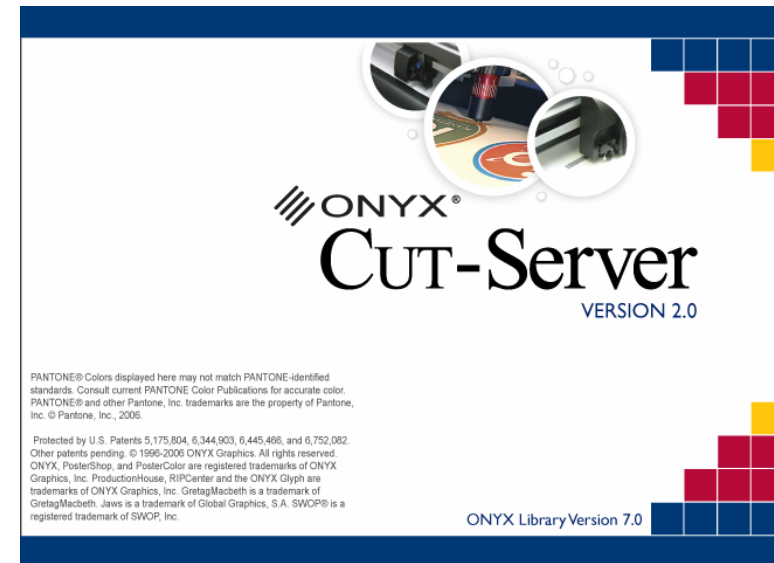
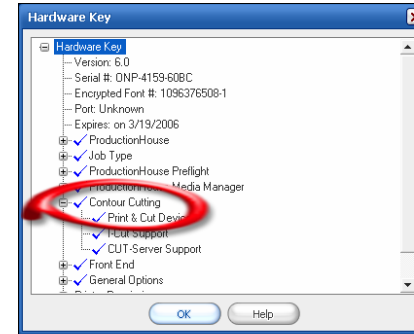
Version 7.0 CUT-Server Cutting Workflow

Onyx Workflow Products



Contour Cutting

- Key Permission
- Standard
 - PosterShop
 - ProductionHouse
- Not available
 - RIP-Center
- Optional Add-on
 - I-Cut application

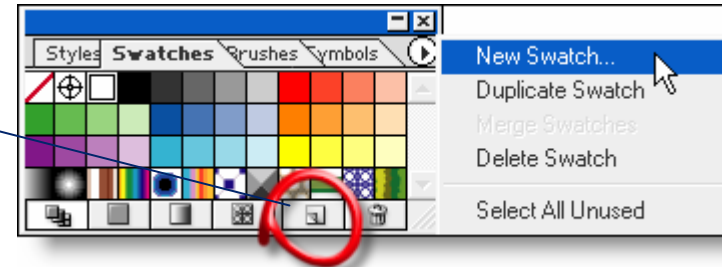


Contact Your Onyx Representative

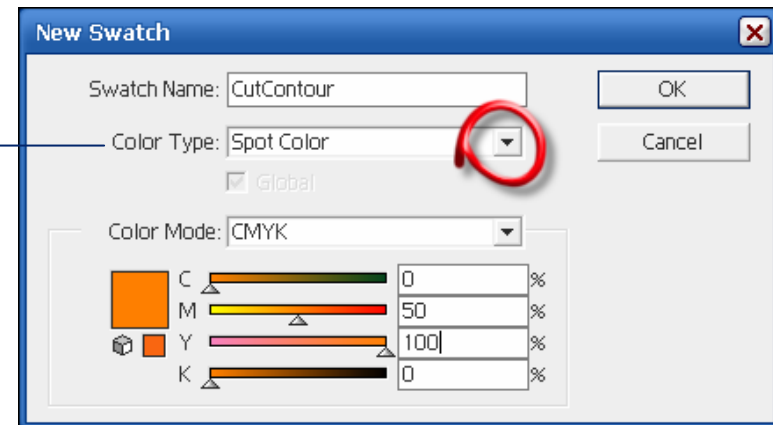
ONYX® Software for Superior Printing Workflow
Authorized Use Only – All Rights Reserved

Creating Cut Paths-Illustrator

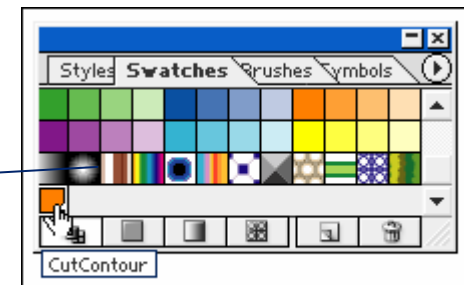
New Swatch



**Swatch Name : CutContour
Color Type : Spot Color
CMYK : Any Value**



Select from Palette



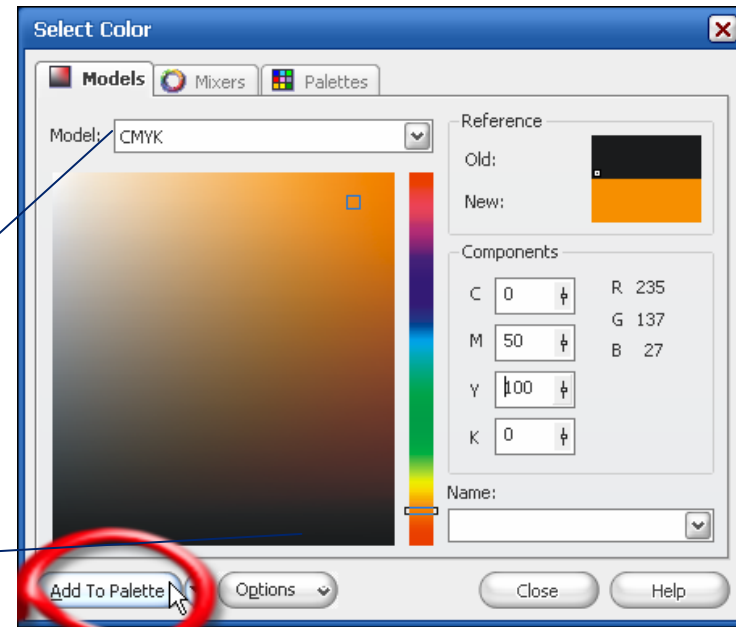
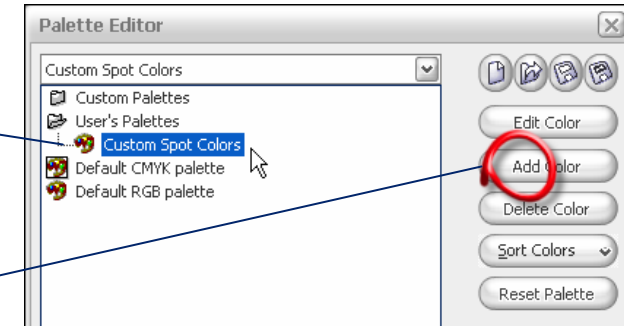
Creating Cut Paths-Corel

Open Palette Editor >
Custom Spot Colors

Add Color

CMYK : Any Value

Click > Add To Palette



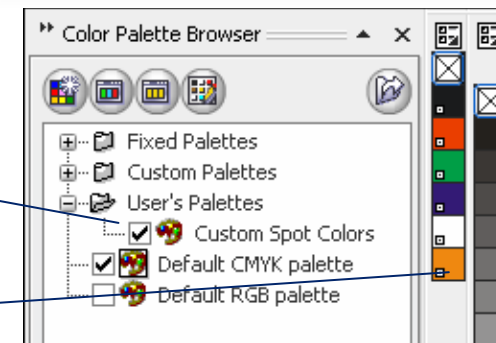
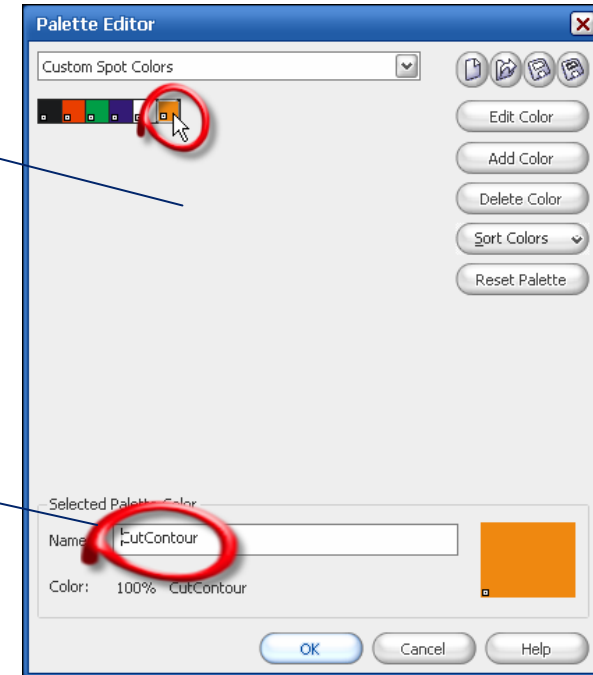
Creating Cut Paths-Corel

New Swatch

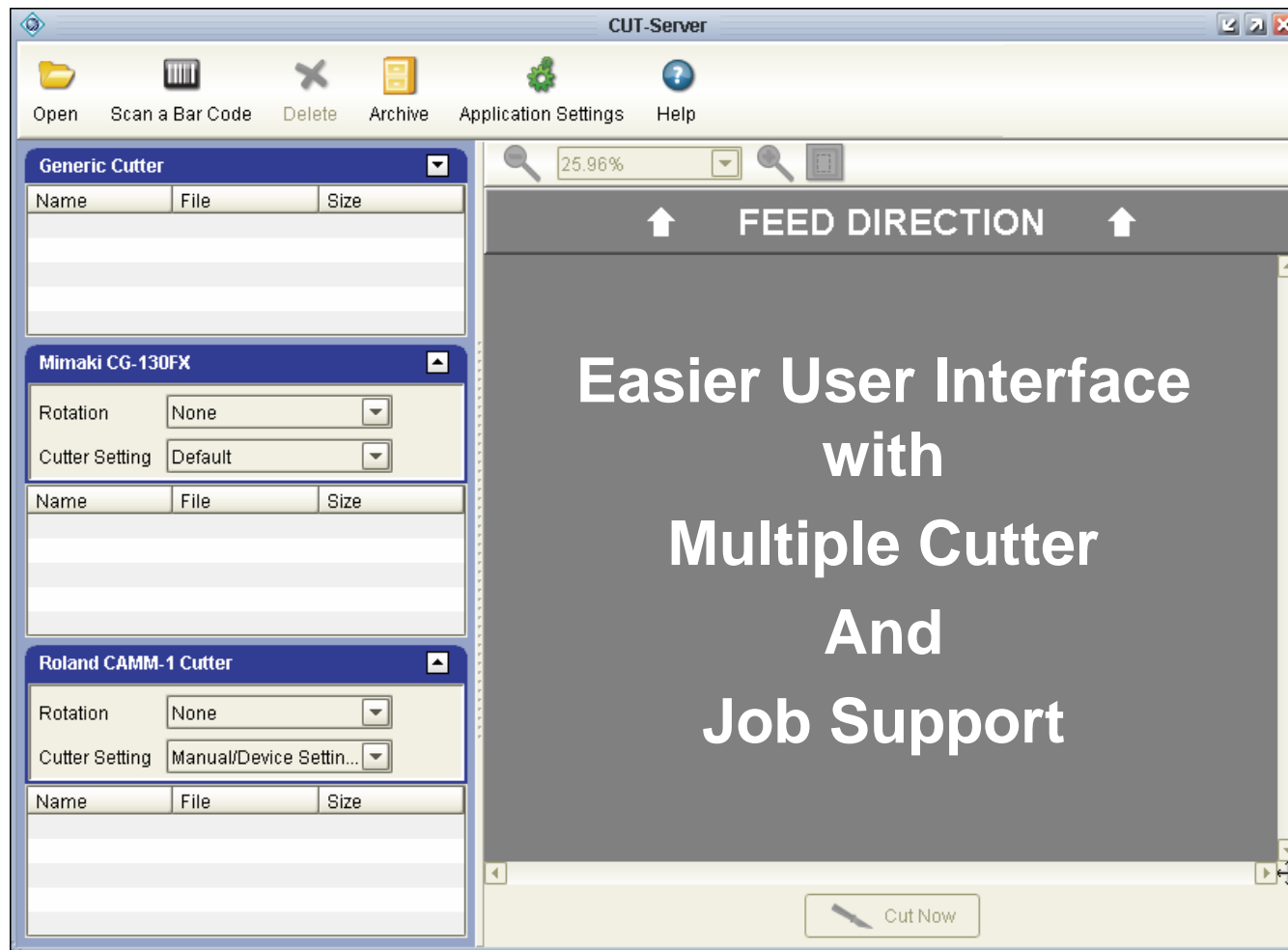
Name : CutContour

Browse > Color Palette

Select from Palette



Overview



CUT-Server 2.0 New Interface

ONYX® Software for Superior Printing Workflow
Authorized Use Only – All Rights Reserved

Overview

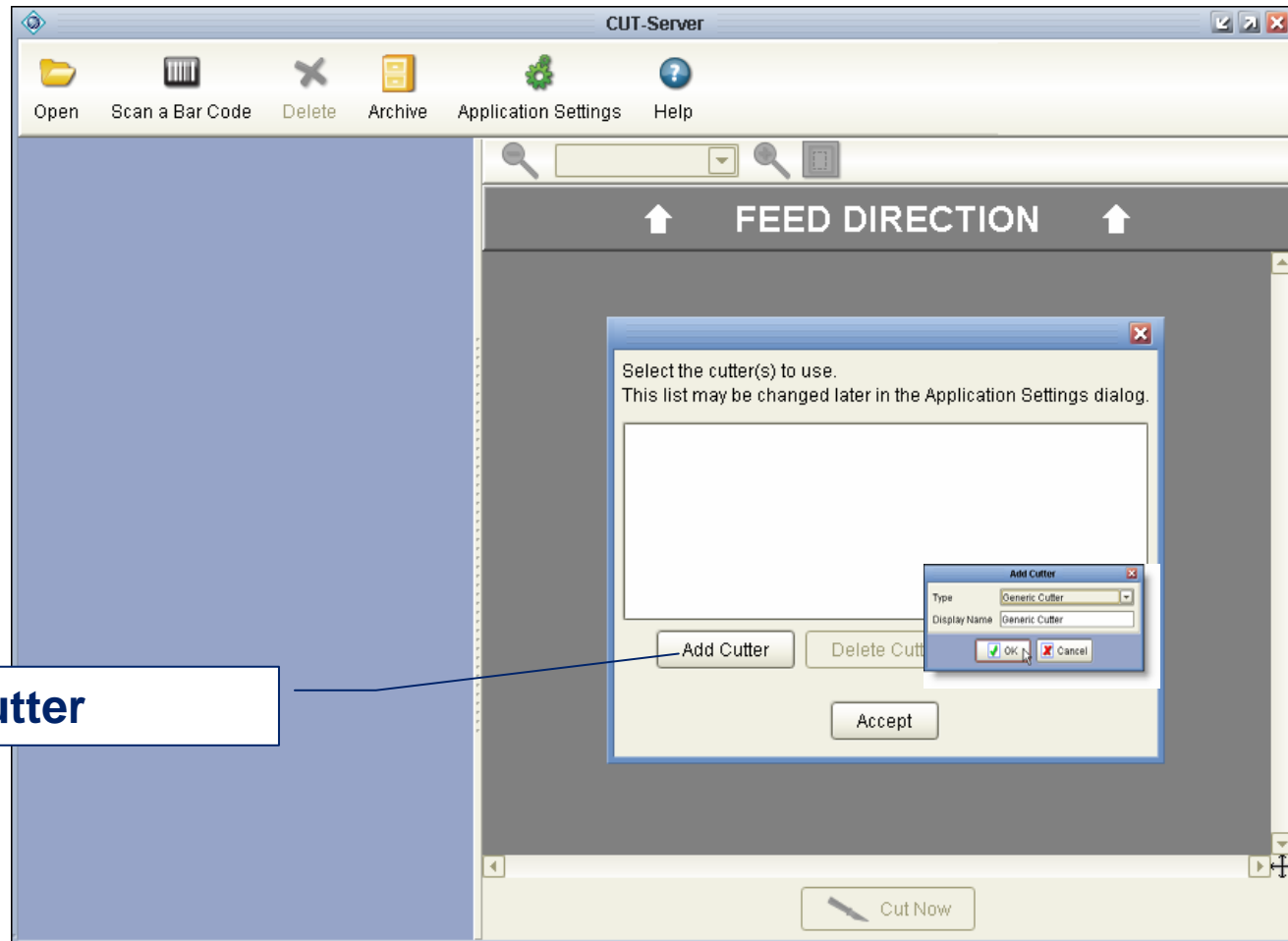
Easier User Interface with Multiple Cutter and Job Support

- Multiple cutter settings
- Rotation support of cut jobs
- Advanced preview
- Improved cut accuracy and efficiency
- Support for additional cut devices
- Archive job capabilities
- Keyboard shortcuts



Print then Cut Workflow

Setup



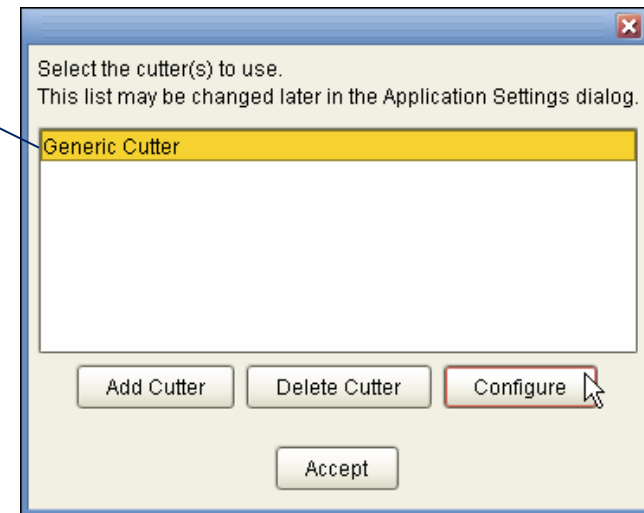
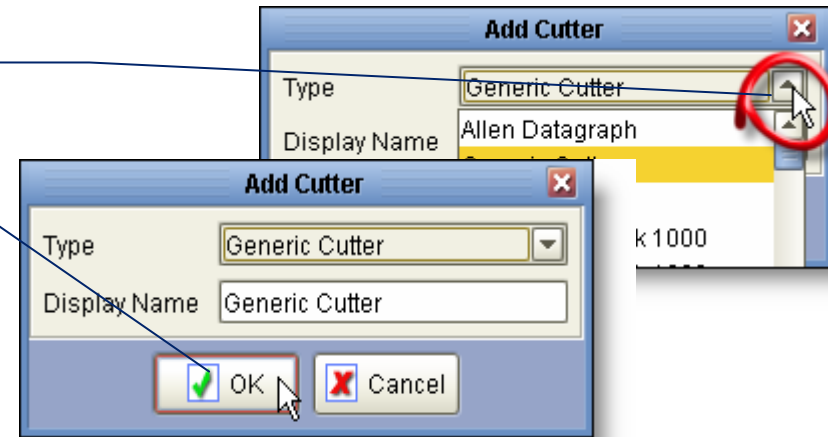
Add Cutter

Setup

Select Type

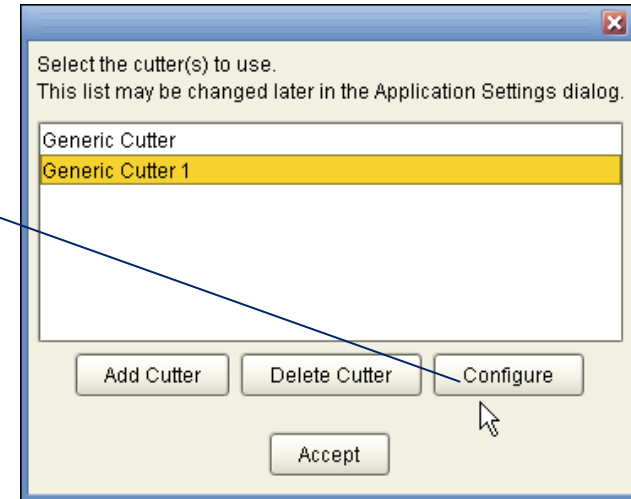
Click *OK*

Device Added to the List

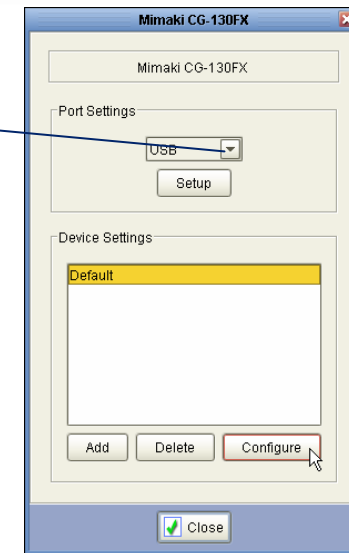
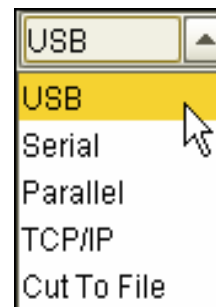


Setup

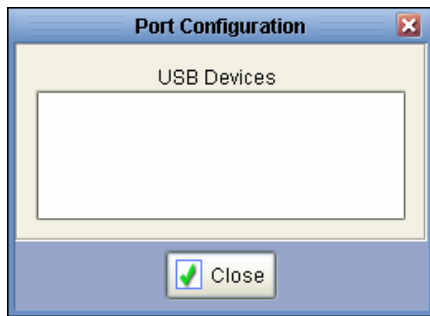
**Highlight Device,
Click *Configure***



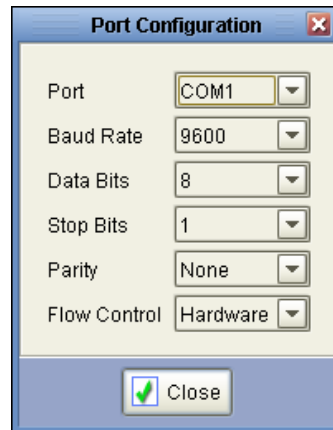
Select Port Settings



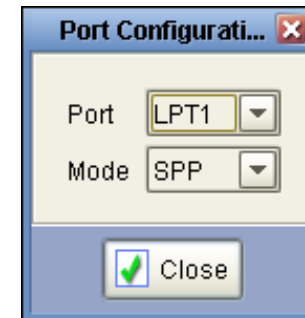
Setup



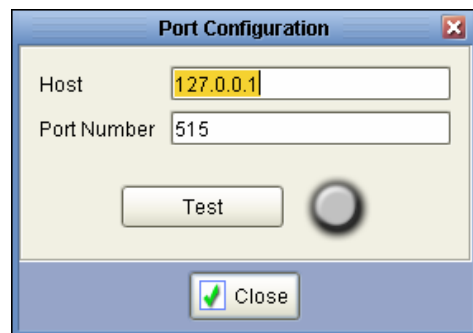
USB



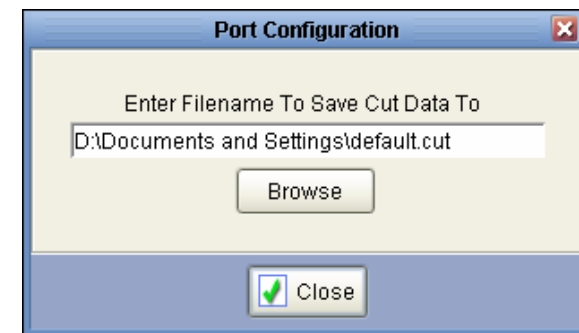
Serial



Parallel



TCP/IP

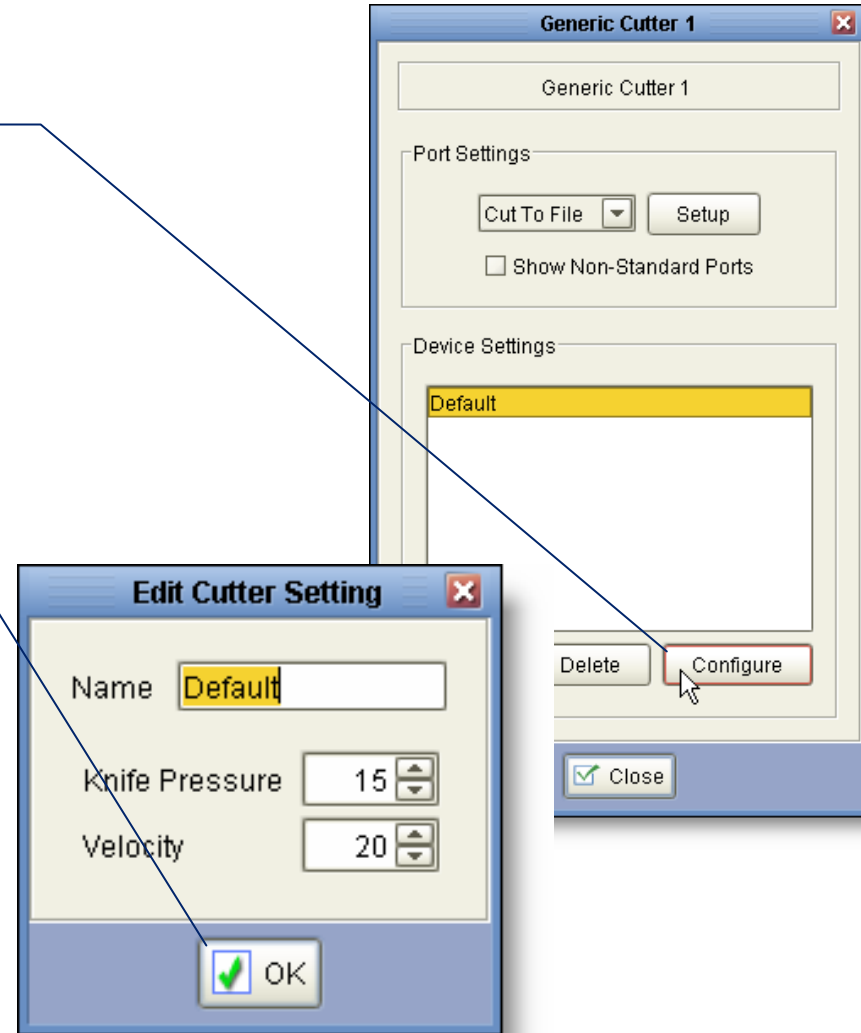


Cut to File

Setup

**Highlight Default,
Click *Configure***

**Change Settings,
Click *OK***

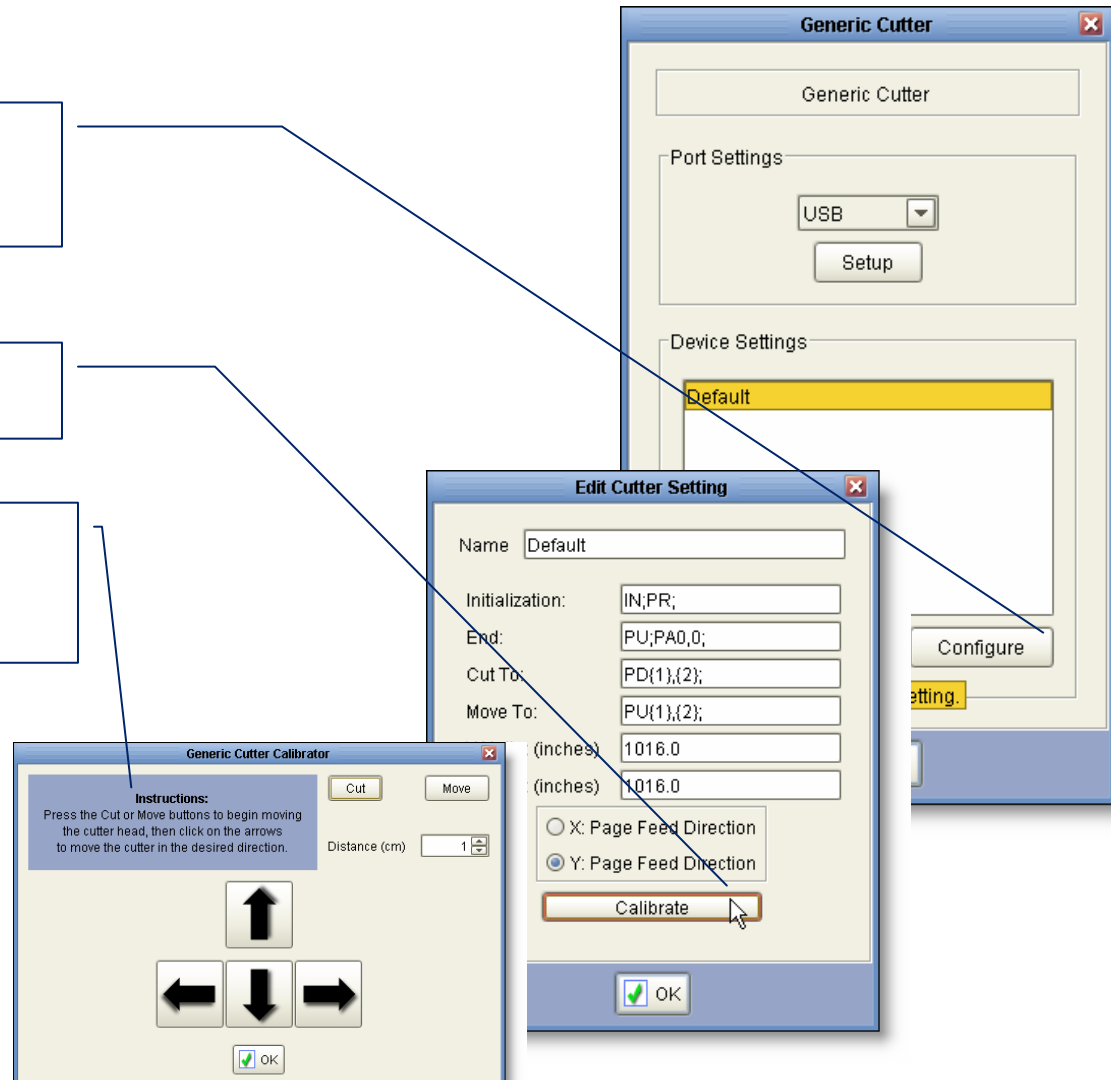


Setup - Generic Cutter

Highlight Default,
Click *Configure*

Click *Calibrate*

Follow on-screen
instructions



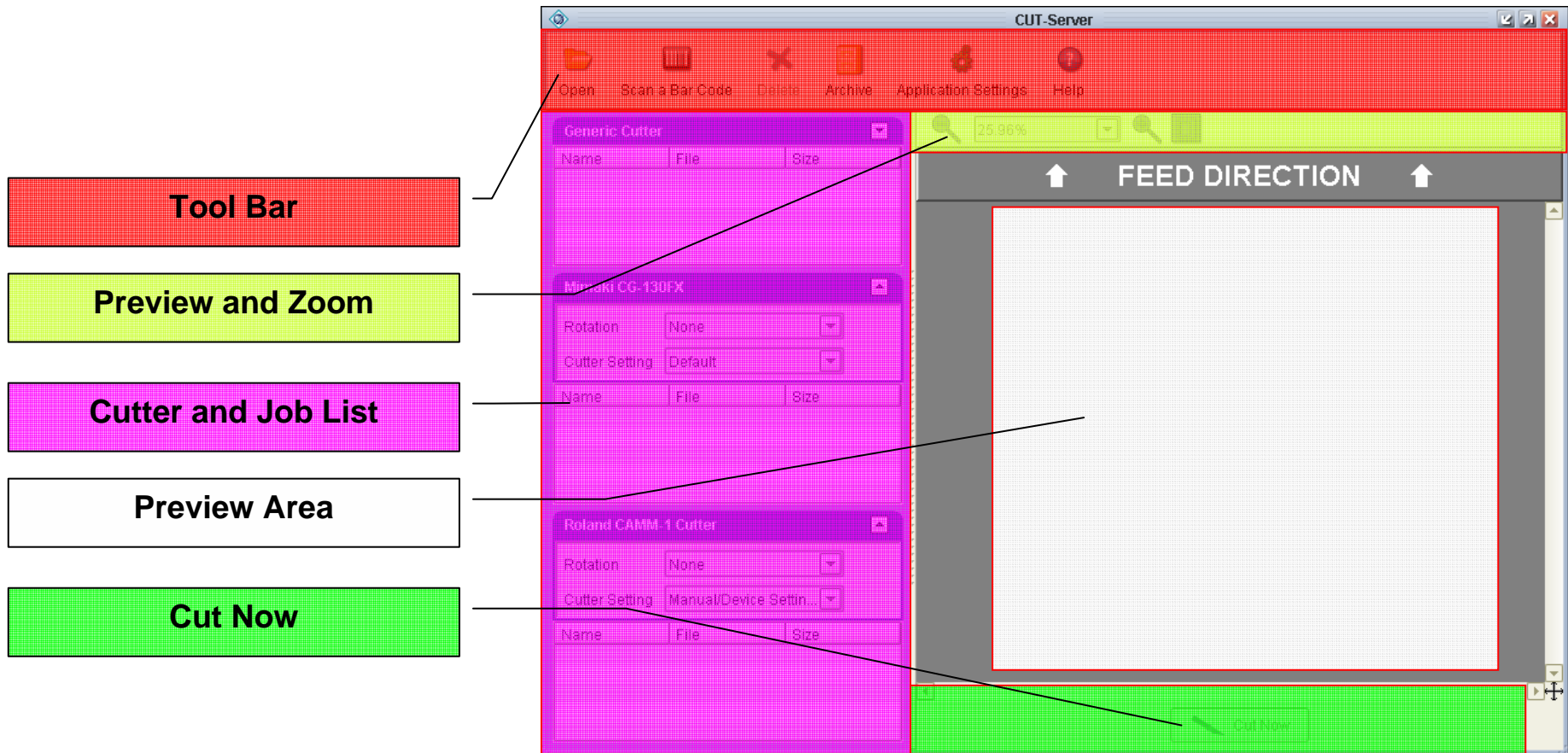
Cutting Workflow

- **Prepare a file for Cutting**
 - Save as .EPS or PDF
- **Configure RIP-Queue**
 - Quick Set
 - Advanced > Postscript File Tab > Use Cutter Path Prefix
 - Change Printer Media and Placement
 - Setup > Options > Contour Cutting > Select desired cutter
 - Print using Quick Set
 - Prints file with alignment marks and barcode to printer
 - Sends Cut files (.XML) to cutter Hot Folder
 - Post-print finishing before cut (mounting or laminating)

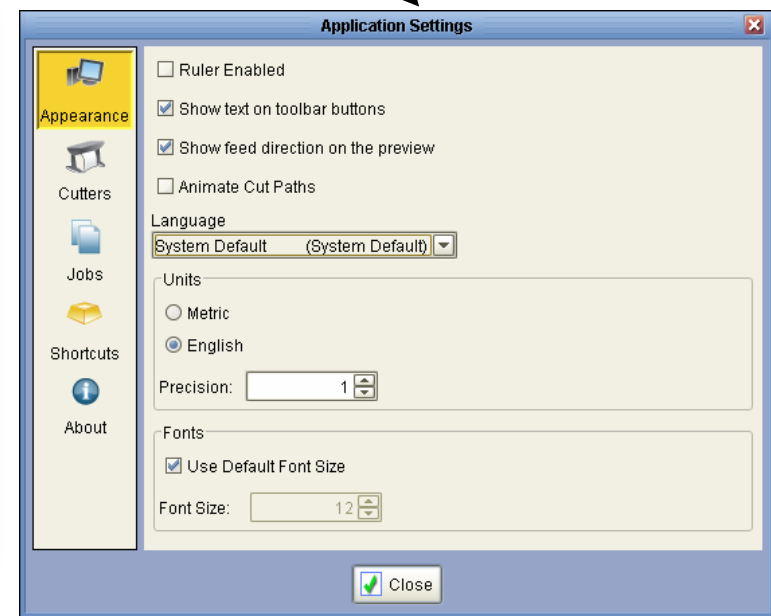
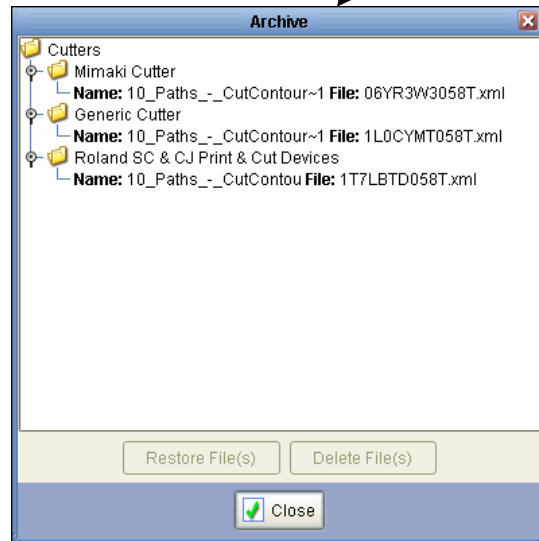
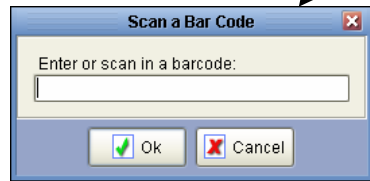
Cutting Workflow

- **Configure CUT-Server**
 - **Add Cutter**
 - Configure port and cutter settings
 - **Open Cut file (.XML)**
 - All Onyx Hot Folders are automatically recognized
 - Open file or select from job list
 - More workflow options include:
 - » Scan a Bar code
 - » Drag and drop cut files directly into the application
 - » Creating custom Hot Folders to be recognized
 - Rotate if necessary
 - **Load Media**
 - Use Feed Direction Arrows as reference
 - Align cut marks using the front panel of the cutter
 - Within CUT-Server, Click *Cut Now*

User Interface



User Interface - Tool Bar



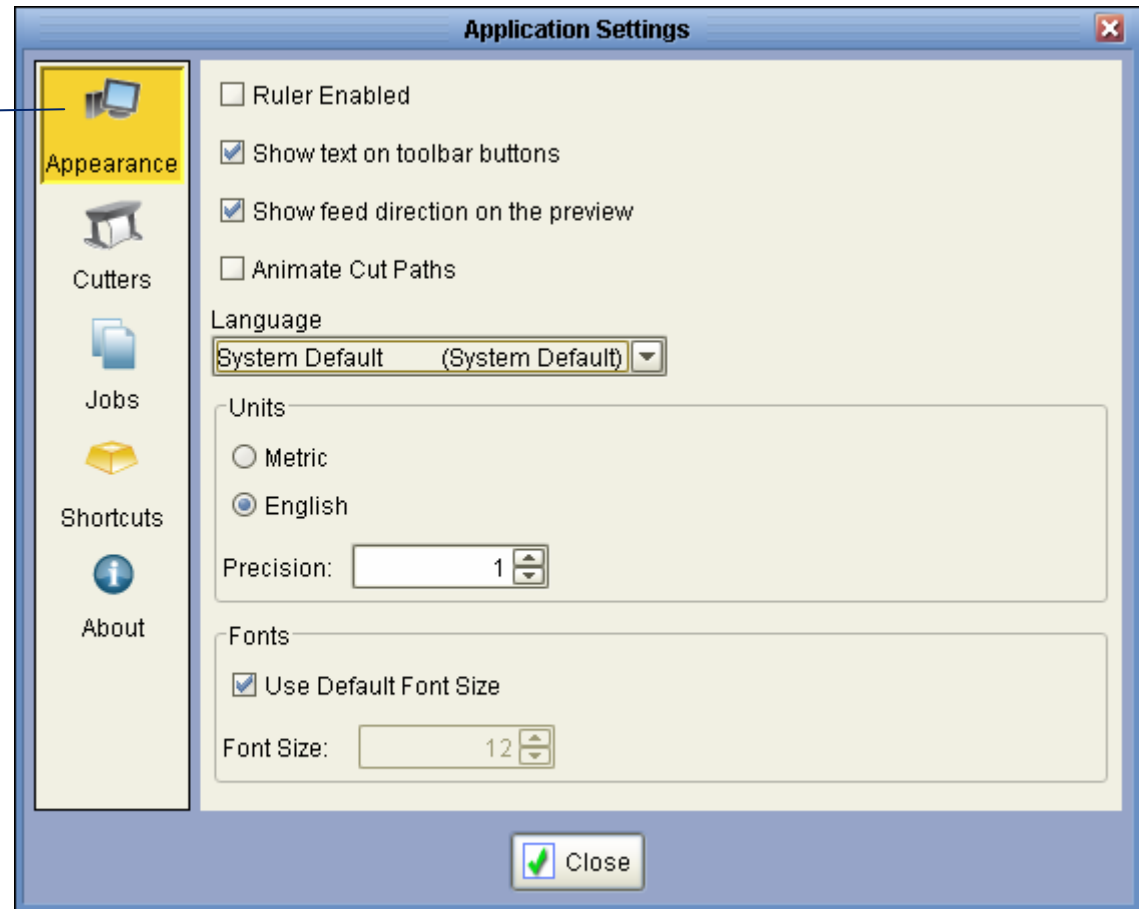
Workflow Options

- **Adding a Cut Job (.XML)**
 - **Cutter Hot Folder**
 - Automatic
 - **File > Open**
 - Browse over network
 - Other known location
 - **Scan a Bar Code**
 - Use Bar code reader
 - **Drag and Drop**
 - Directly into the application
 - **Custom Hot Folder**
 - Application Settings > Jobs > Add



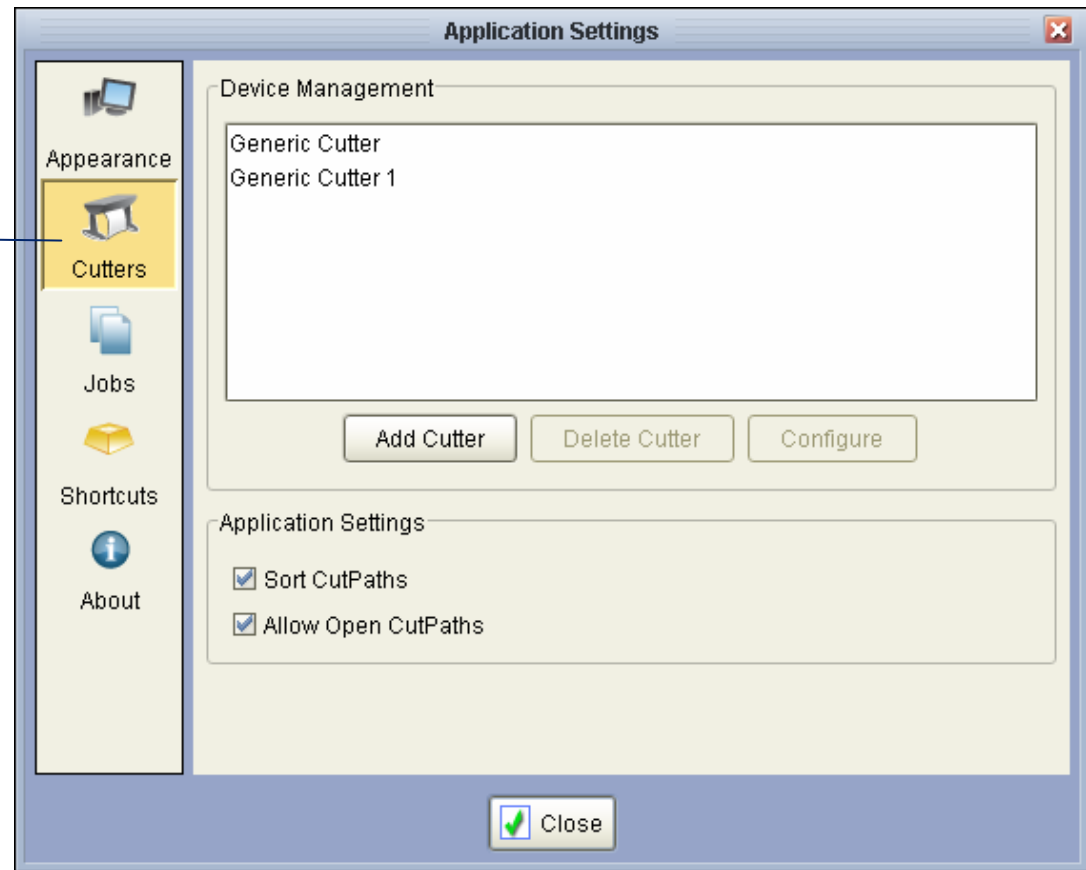
Application Settings

Appearance

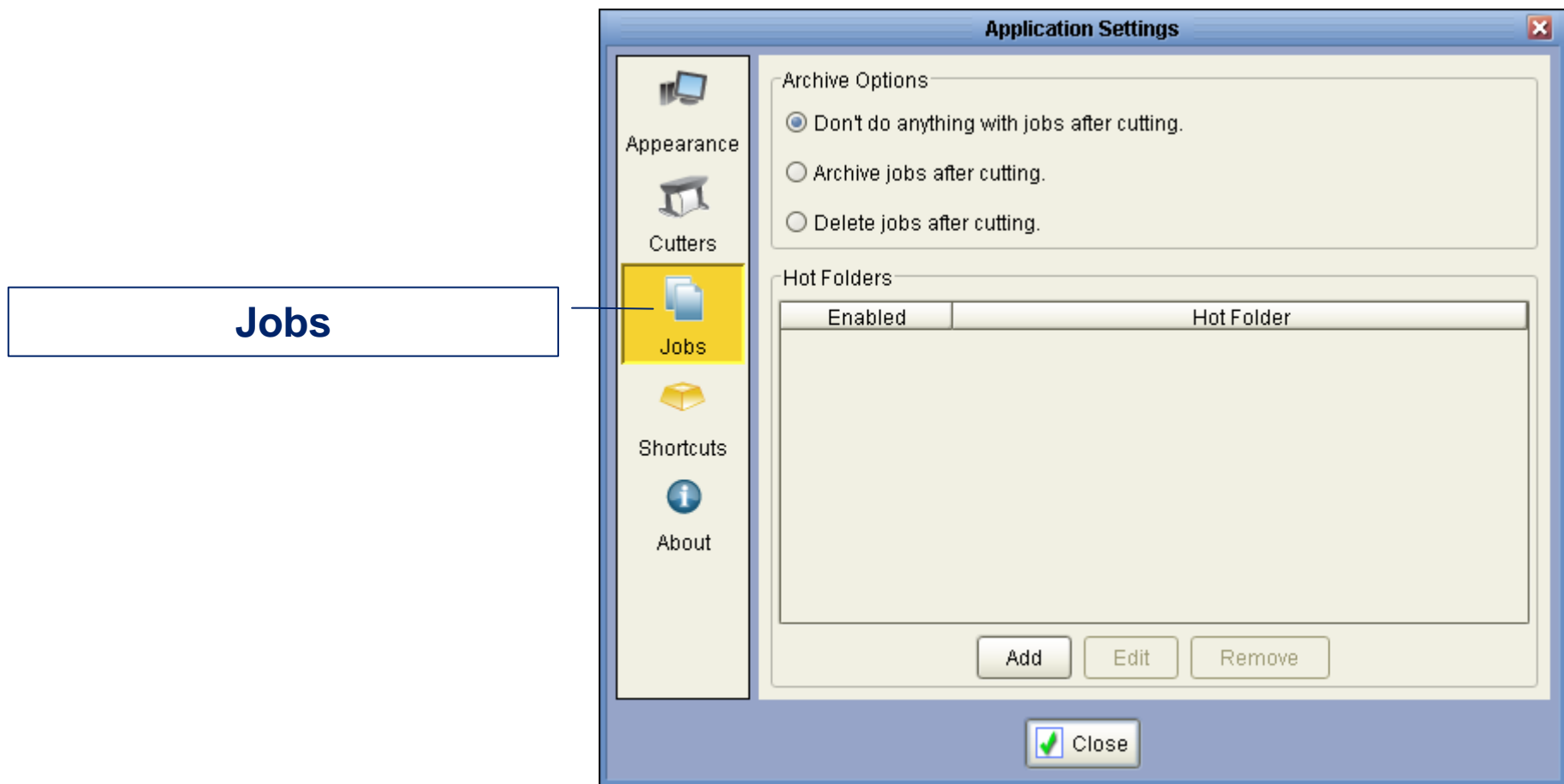


Application Settings

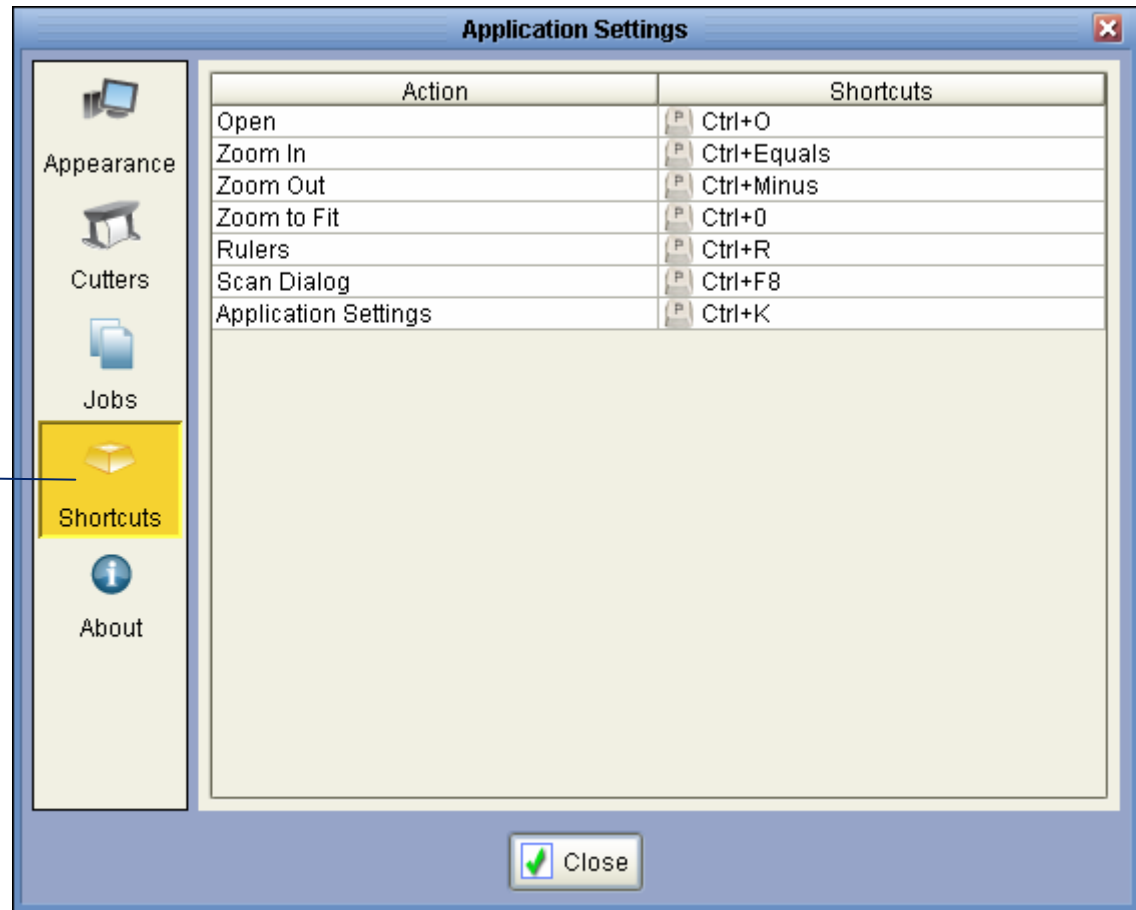
Cutters



Application Settings

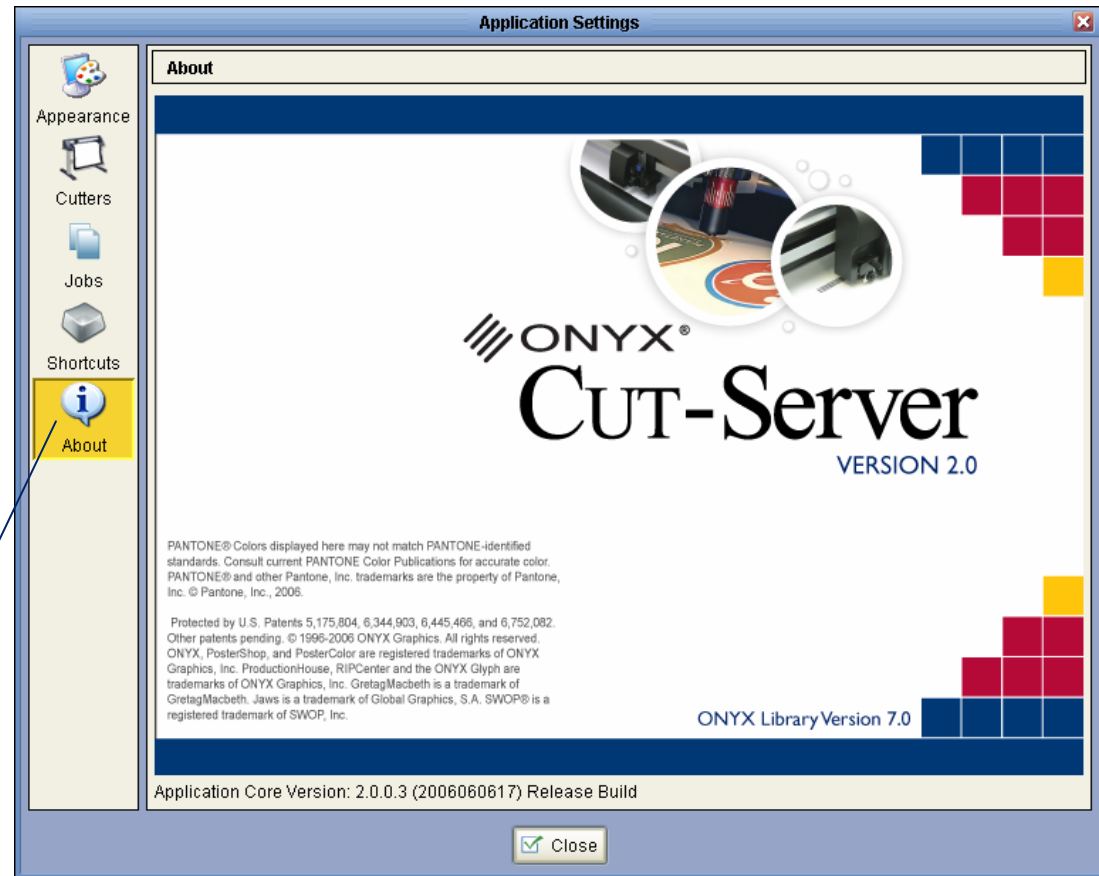


Application Settings



Shortcuts

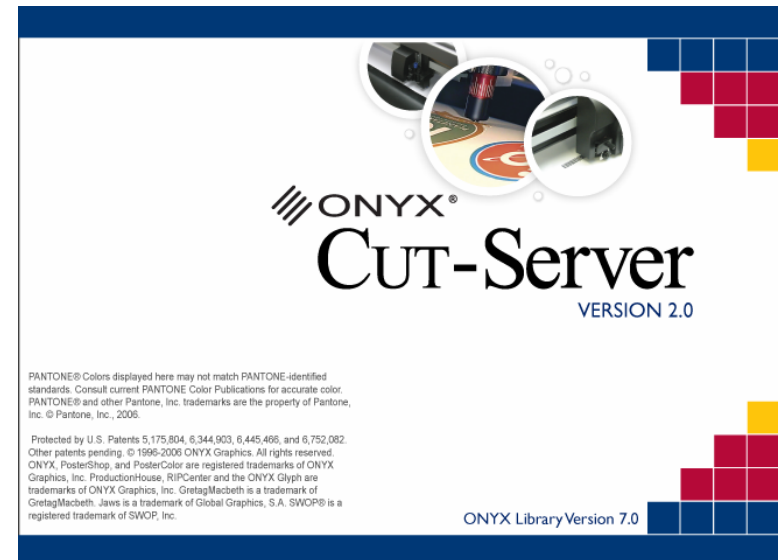
Application Settings



About

Recap

- Easier user interface
- Multiple cutter and job support
- Multiple cutter settings
- Rotation support of cut jobs
- Advanced preview
- Improved cut accuracy
- Improved cut efficiency
- Support for additional cut devices
- Archive job capabilities
- Keyboard shortcuts



Questions?



Thank You for Joining!



ONYX[®]

www.onyxgfx.com

Contact Your ONYX Representative

training@onyxgfx.com

support@onyxgfx.com

sales@onyxgfx.com