

Visualization

Increase the transparency on the manufacturing process and boost your OEE (Overall Equipment Effectiveness) & KPI (Key Performance Indicator)

**Easy
Installation**

**Reasonable
Initial Cost**

**Multi-
purpose**

<Compact data logger> PetitLOGGER GL100

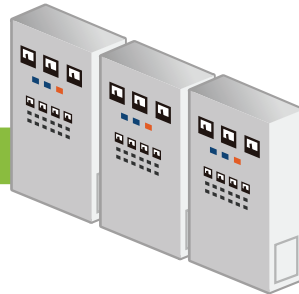
- Flexible input module allows wide range of measurements
- Available the software for PC & Smart devices
- Reliable measurement with useful functions



- Instant flow rate
- Accumulated flow rate
- Pressure
- Power consumption
- Temperature
- Humidity

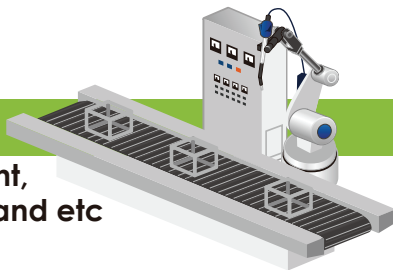
Instrumentation

Pressure, Flow, Logic, Pulse, Power and etc



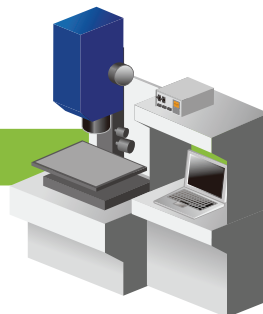
Automation

Displacement, Count, Voltage & Current, and etc



Machine Tool

Temp., Rotation, Count, Vibration, Pressure and etc



Voltage /Temp.



GL100 + GS-4VT



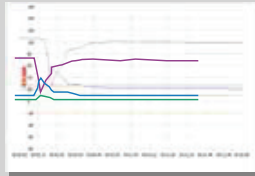
Transfer the collected data to PC

AC current

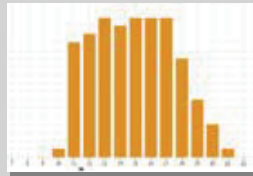
GL100 + GS-DPA +
GS-AC50A / 100A / 200A



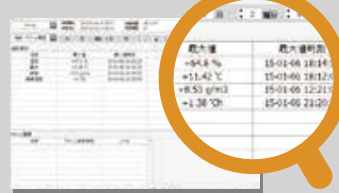
Visualized by APS (Software)



▲ Trend waveform chart



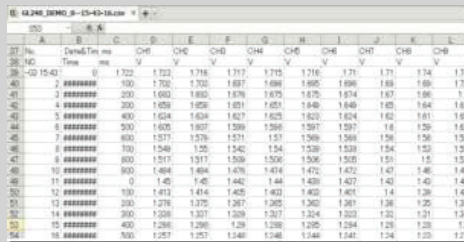
▲ Accumulated bar chart



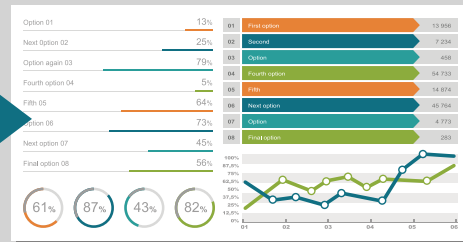
▲ Statistics value & Alarm history



Visualized by customized format (CSV)



▲ Raw Data (CSV)



▲ Visualize (Customize)



Compact data logger

Specifications of GL100-N

Item	Description
Number of channel	Up to 4 channels (varies by the type of input module used, and measurement type is fixed with each input module.)
Interface to PC	USB 2.0
Functions	<ul style="list-style-type: none"> • Real-time data capturing • Displays the captured data value to the LCD in real-time and save the monitoring values • Set conditions using the Menu setting While using USB port : <ul style="list-style-type: none"> • Output captured data in real-time • Output the saved data from the internal memory • Full control of the GL100 from the PC application software
Display	LCD (backlit monochrome, graphical type)
Storage device	<ul style="list-style-type: none"> • Built-in RAM (Approx. 4.9 MB) • micro SD memory card * Maximum file size for captured data is 1.9 GB.
Sampling interval	0.5 to 30 seconds and 1 to 60 minutes
Output signal	Alarm (1channel)
Power source	<ul style="list-style-type: none"> • Alkaline battery (AA x 2) • USB bus-power (micro USB connector) * The required power capacity is 5V, 1A when AC adapter for microUSB drive is used. AC adapter is not included.
Operating environment	Temperature : -10 °C to 50 °C Humidity : up to 80% RH (non condensed) Water resistance : IP54
External dimension	Approx. 66 x 100 x 27 mm (exclude protrusion)
Weight	Approx. 125 g

Specifications of input module

Temperature & Humidity sensor (GS-TH)

Type of measurement	Temperature, and Humidity Accumulated temp. (calculated value), Dew-point temp. (calculated value)
Measuring range	Temperature : -20 to 85 °C Humidity : 0 to 100 % RH

Voltage & Thermocouple input terminal (GS-4VT)

Number of channel	Analog voltage 4 channels, Logic or Pulse 4 channels (*1)
Measuring range	Voltage : 20mV to 50V, 1-5V FS Thermocouple: K type (-200 to 1370 °C) & T type (-200 to 400 °C) Logic (signal pattern) : 0 to 24 V (common ground) Pulse (count) : Max. 200 counts/sampling interval, accumulating up to 65535 counts

AC Current sensor adapter (GS-DPA-AC)

Type of measurement	Current Power (calculated value), Electric energy (calculated value)
Application circuit	Single-phase two-wire, Single-phase three-wire system, or Three-phase three-wire
Sensor	Clamp-on current probe (optional), Two (2) sensors are able to connect
Measuring range	50, 100, 200 A RMS (varies by the sensor)

*1 : The measurement type for analog input channels can each be separately selected but also available as set of 4 channels.

- Due to the possibility of equipment or PC failure, the data files on the instrument will not be guaranteed to be held on the memory. Please make a backup of data whenever possible to avoid data loss.
- Brand names and product names listed in this brochure are the trademarks or registered trademarks of their respective owners.
- Items mentioned are subject to change without notice. For more information about product, please check the web site or contact your local representative.



For using equipment in correctly and safely

- Before using it, please read the user manual and then please use it properly in accordance with the description.
- To avoid malfunction or an electric shock by current leakage or voltage, please ensure a ground connection and use according to the specification.

GRAPHTEC

Graphtec America, Inc.

17462 Armstrong Avenue Irvine, CA 92614

www.graphtecamerica.com/instruments

T: 949.860.4186 E: inst.sales@graphtecamerica.com



GL100-APP_KE10431_2D