

UPGRADING THE FIRMWARE

The version of your WR300's firmware can be upgraded by rewriting the flash ROM on the pertinent circuit boards using a choice of methods. You can upgrade the firmware by loading the update program from either a personal computer via the TCP/IP port or from a PCMCIA card.

1. How to Upgrade the WR300 Flash ROM from the TCP/IP port

Preparations for the upgrade

- (1) Connect the AC cable for the WR300.
- (2) Connect the LAN cable for the WR300 and the PC. (If you connect P to P, use a cross LAN cable. If you connect with a hub, use a parallel LAN Cable.)

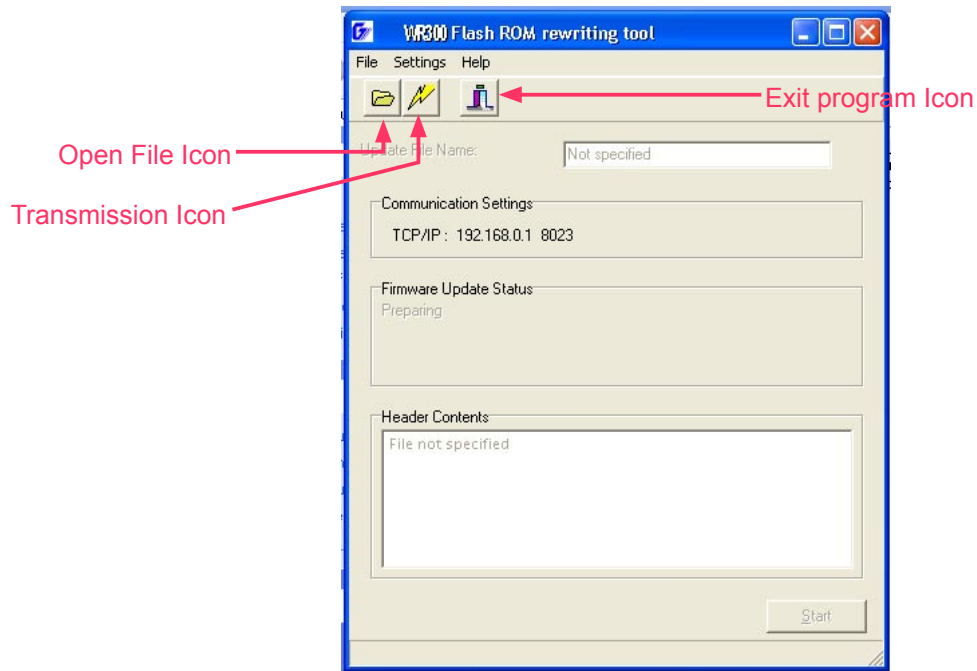
How to upgrade

OS	:Windows 2000/XP
Software	:WR30upd.exe ← Upgrade software file
	:xxx.dll ← Upgrade software dll file
Firmware	:Mxxxa001.W30 ← Main Program file for WR300
	:Sxxxa001.W30 ← Sub Program file for printer
	:lxxxa001.W30 ← Sub Program file for IRIG

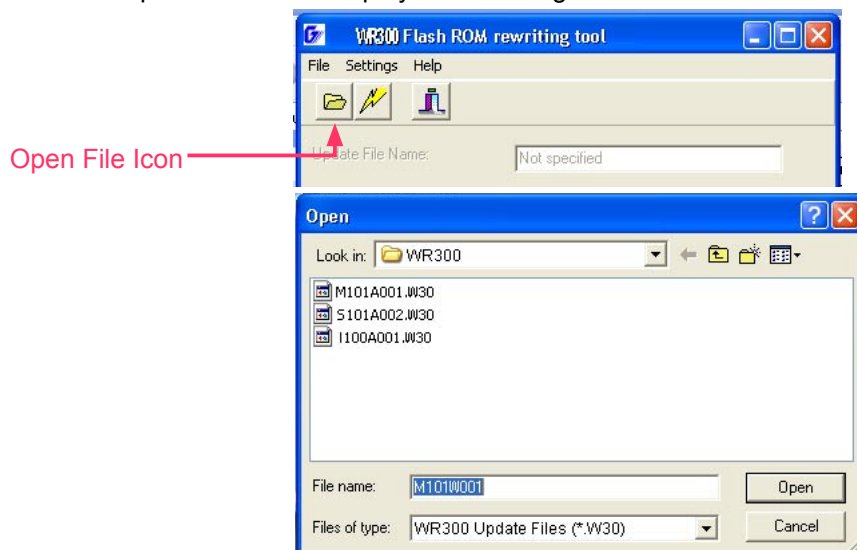
- (1) Copy the upgrade software files to the same directory in the PC.
- (2) Turn on the power switch of the WR300.
- (3) Execute WR30upd.exe.



(4) The following menu is displayed.

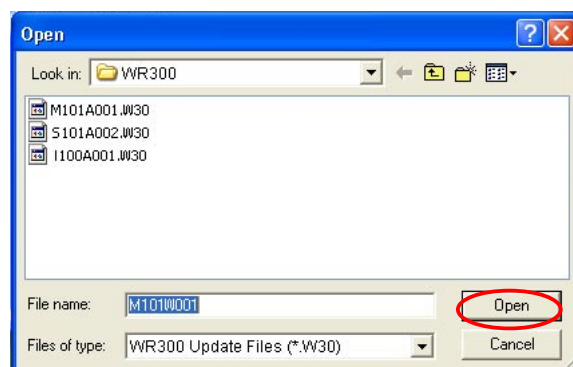


(5) Click the Open File icon to display the following menu.



(6) Select the main update file as "Mxxxa001.W30".

(7) Click the Open Button.



- (8) If you need to change the TCP/IP settings, click the transmission icon to set up the TCP/IP conditions.



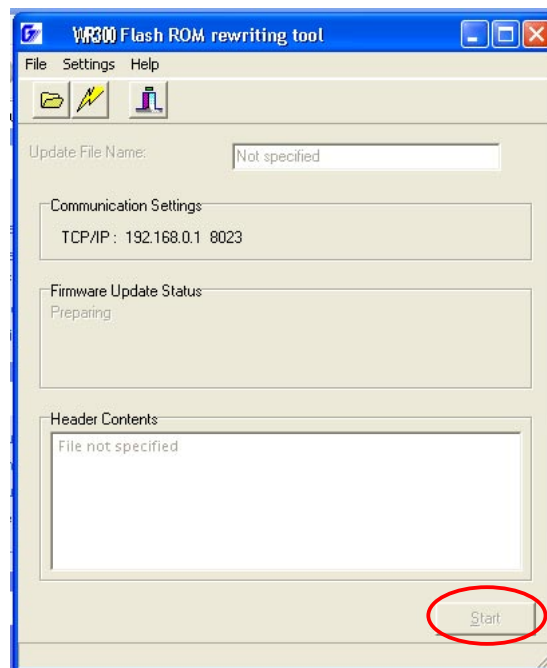
The default setting for the WR300 is set to "192.168.0.1".

If you haven't changed it, use this setting.

Also, your computer's TCP/IP port setting must be set to the same segment as "192.168.0.X".



- (9) Click the Start button to start upgrading when you are ready to upgrade.

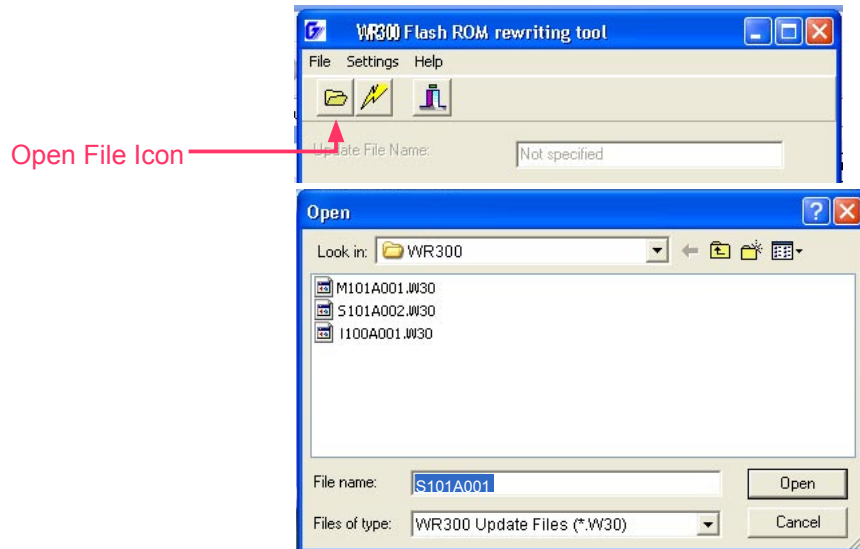


The following message will appear on the WR300 display in yellow characters when the upgrade is complete. Also the beeper will sound for 2 seconds.

"Please Turn Off the Power. I have locked up."

- (10) Turn off the power to the WR300 when the above message is displayed.
- (11) Turn on the power to the WR300 again.

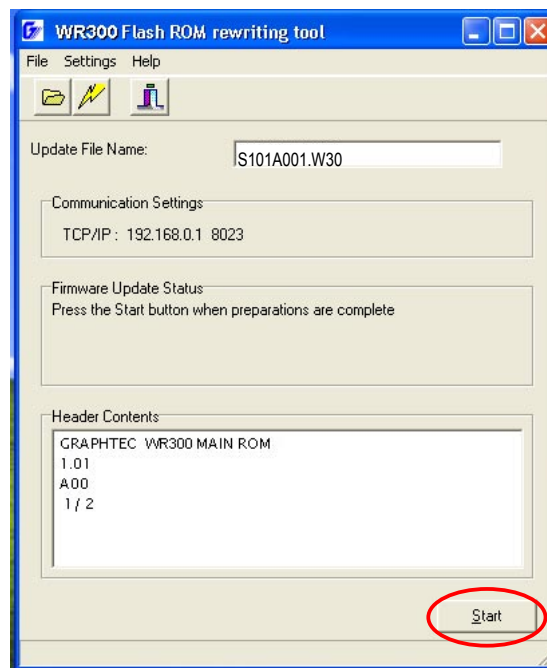
(12) Click the Open File icon to display the following menu.



(13) Select the sub update file "Sxxxa001.W30" to upgrade the printer firmware.

(14) Click the Open Button.

(15) Click the Start button to start upgrading when you are ready to upgrade.

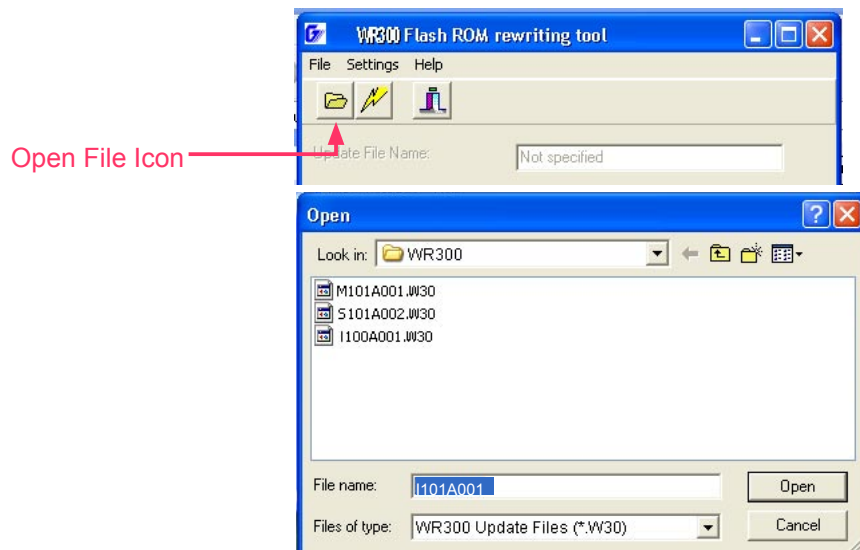


The following message will appear on the WR300 display in yellow characters when the upgrade is complete. Also the beeper will sound for 2 seconds.

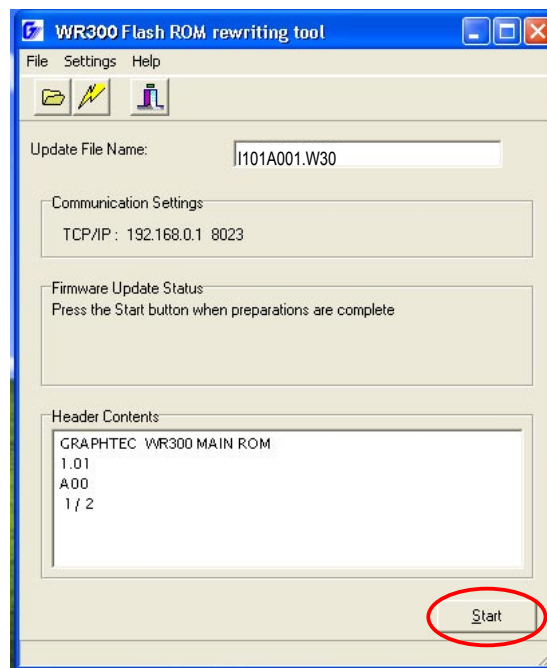
"Please Turn Off the Power. I have locked up."

(16) Turn off the power to the WR300 when the above message is displayed.

- (17) Turn on the power to the WR300 again.
- (18) Click the Open File icon to display the following menu.



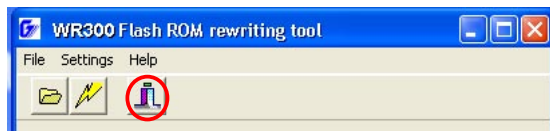
- (19) Select the sub update file "Ixxxa001.W30" to upgrade the IRIG firmware.
- (20) Click the Open Button.
- (21) Click the Start button to start upgrading when you are ready to upgrade.



The following message will appear on the WR300 display in yellow characters when the upgrade is complete. Also the beeper will sound for 2 seconds.
"Please Turn Off the Power. I have locked up."

- (22) Turn off the power to the WR300 when the above message is displayed.

(23) Click the Exit icon to exit this upgrade program.



2. How to Upgrade the WR300 Flash ROM from the PCMCIA Card

Preparations for the upgrade

Firmware :Mxxxa001.W30 ← Main Program file for WR300
 :Sxxxa001.W30 ← Sub Program file for printer
 :lxxxa001.d30 ← Sub Program file for IRIG

- (1) Connect the AC cable for the WR300.
- (2) Copy the main program file to the PCMCIA card from the computer. (Do not copy the sub program and other files to this PCMCIA card.)

How to upgrade

- (1) Insert the PCMCIA card containing the main upgrade program into the WR300's PCMCIA card slot.
- (2) Turn on the WR300 to automatically execute the upgrade program.
- (3) Wait until the display shown below appears.
 The following message will appear on the WR300 display in yellow characters when the upgrade is complete. Also the beeper will sound for 2 seconds.
 "Please Turn Off the Power. I have locked up."
- (4) Turn off the power to the WR300 when the above message is displayed.
- (5) Copy the sub program file for the printer to the PCMCIA card from the computer. (Do not copy the other files to this PCMCIA card.)
- (6) Insert the PCMCIA card containing the sub upgrade program for the printer into the WR300's PCMCIA card slot.
- (6) Turn on the WR300 to automatically execute the upgrade program.
- (7) Wait until the display shown below appears.
 The following message will appear on the WR300 display in yellow characters when the upgrade is complete. Also the beeper will sound for 2 seconds.
 "Please Turn Off the Power. I have locked up."
- (8) Turn off the power to the WR300 when the above message is displayed.
- (9) Copy the sub program file for the IRIG function to the PCMCIA card from the computer. (Do not copy the other files to this PCMCIA card.)
- (10) Insert the PCMCIA card containing the sub upgrade program for the IRIG function into the WR300's PCMCIA card slot.
- (11) Turn on the WR300 to automatically execute the upgrade program.
- (12) Wait until the display shown below appears.
 The following message will appear on the WR300 display in yellow characters when the upgrade is complete. Also the beeper will sound for 2 seconds.
 "Please Turn Off the Power. I have locked up."
- (13) Turn off the power to the WR300 when the above message is displayed.