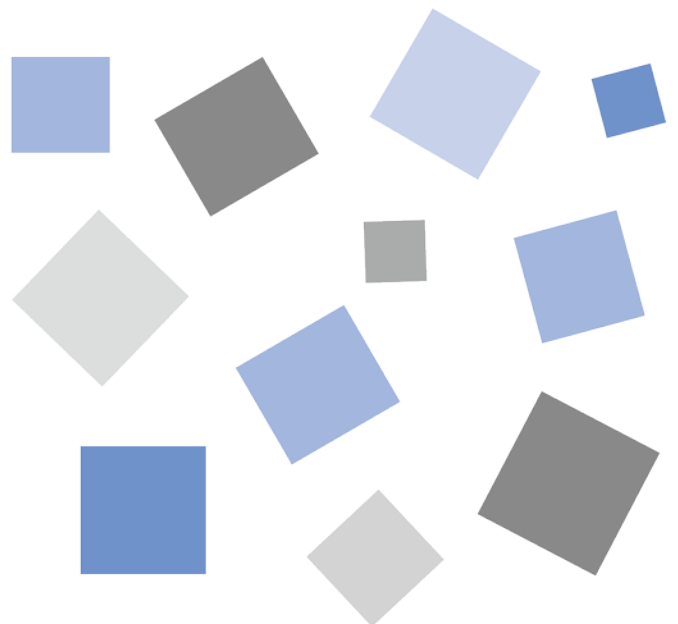


# USB Driver



## Installation manual

MANUAL NO. GL-USB-UM-154



# GRAPHTEC

# USB Driver Installation manual

To connect the GL series or MT100 to a PC with the USB interface, a USB driver must be installed in the PC.  
This manual explains the procedures for installing the USB driver version 2.03.

USB Driver Installation manual.....	2
1. In the case of Windows 10.....	3
1-1. Preparation before Installation.....	3
1-2. Installation Procedures .....	3
1-3. Device Driver Confirmation Procedures.....	5
2. In the case of Windows 8 .....	7
2-1. Preparation before Installation.....	7
2-2. Installation Procedures .....	7
2-3. Device Driver Confirmation Procedures.....	9
3. In the case of Windows 7 .....	11
3-1. Preparation before Installation.....	11
3-2. Installation Procedures .....	11
3-3. Device Driver Confirmation Procedures.....	13
4. In the case of Windows Vista.....	16
4-1. Preparation before Installation.....	16
4-2. Installation Procedures .....	16
4-3. Device Driver Confirmation Procedures.....	18

# 1. In the case of Windows 10

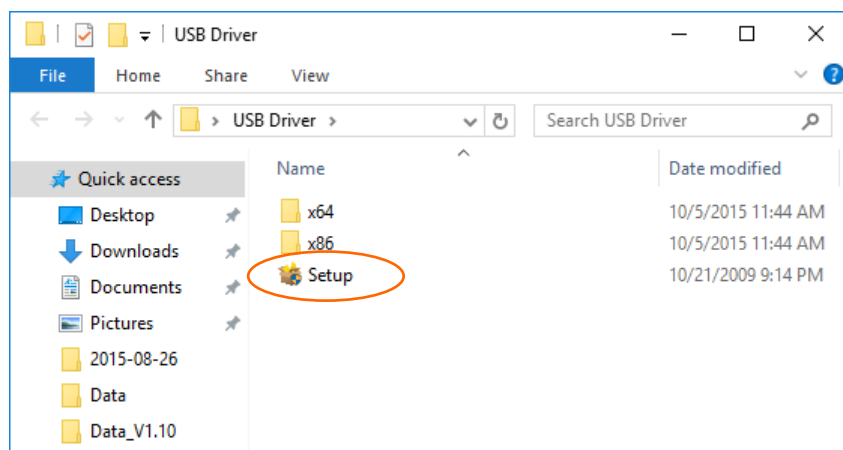
## 1-1. Preparation before Installation

- Confirm GL series or MT100 is not connected to your PC using the USB cable. If it is connected to your PC, disconnect the USB cable.
- Close all the other software.

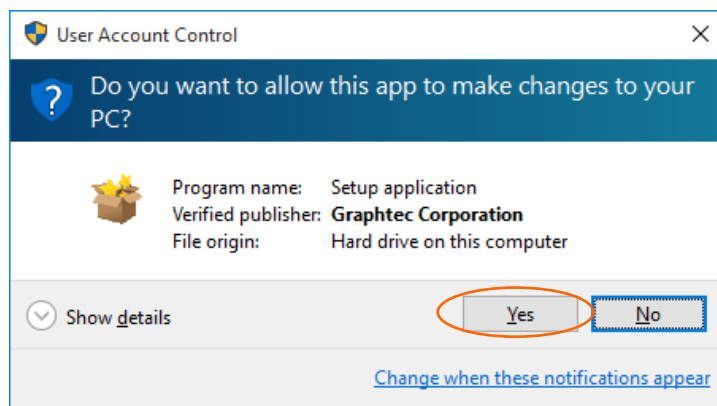
## 1-2. Installation Procedures

(1) Start D:\USB Driver\USB Driver\Setup.exe. (Double click the Setup or Setup.exe.)

Note: D: drive name of CD-ROM. The letter of CD-ROM drive vary it with the CD-ROM drive of your PC.

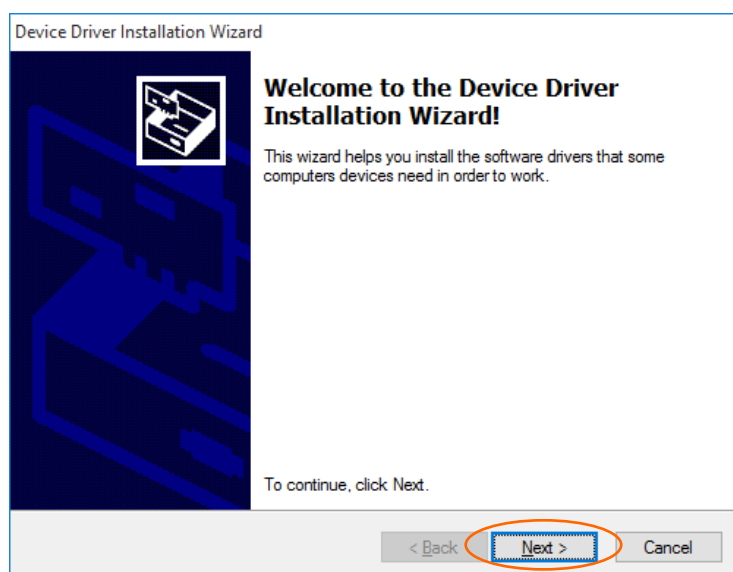


(2) User Account Control dialog may appear.



Press Yes button when the User Account Control dialog appears.

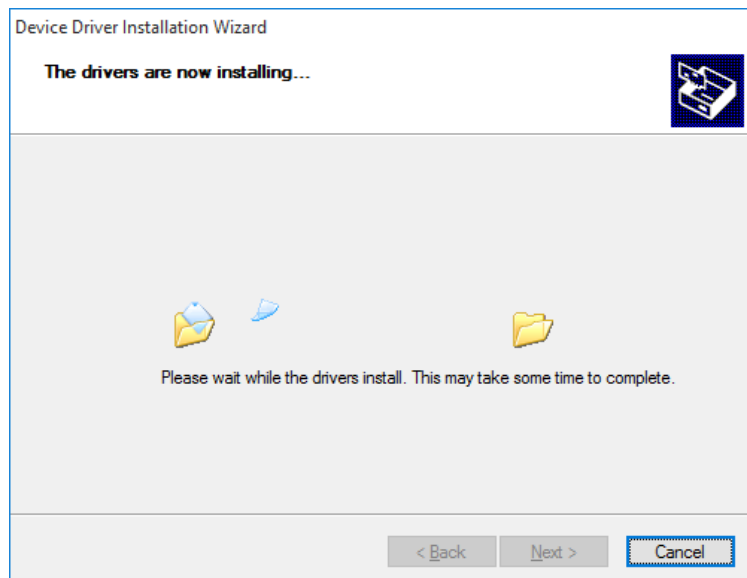
(3) Device Driver Installation Wizard starts.



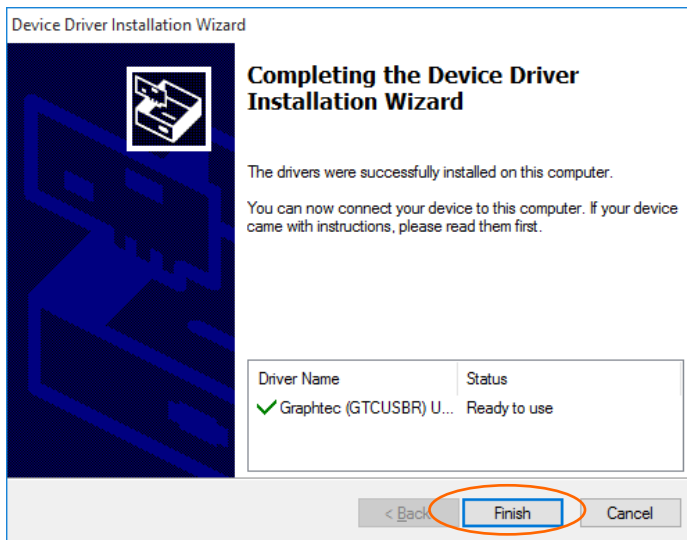
Press the Next button.

(4) Windows Security dialog may opens. Press Install button.

(5) Please wait while wizard installs the driver software.



(6) The installation completes.



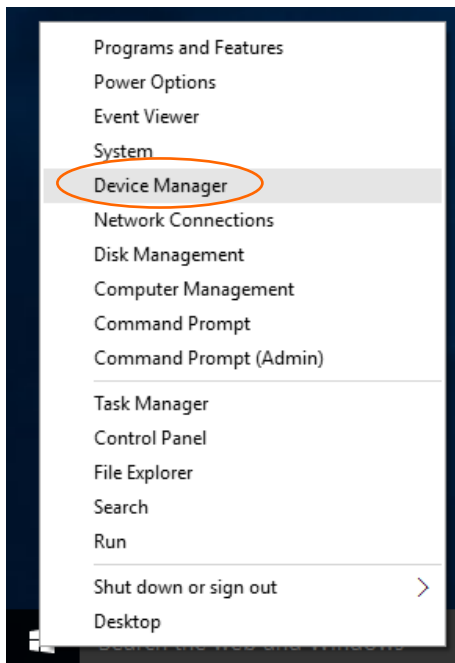
Press Finish button to exit the Setup.

### 1-3. Device Driver Confirmation Procedures

Confirm that the USB driver is correctly installed by the procedures below.

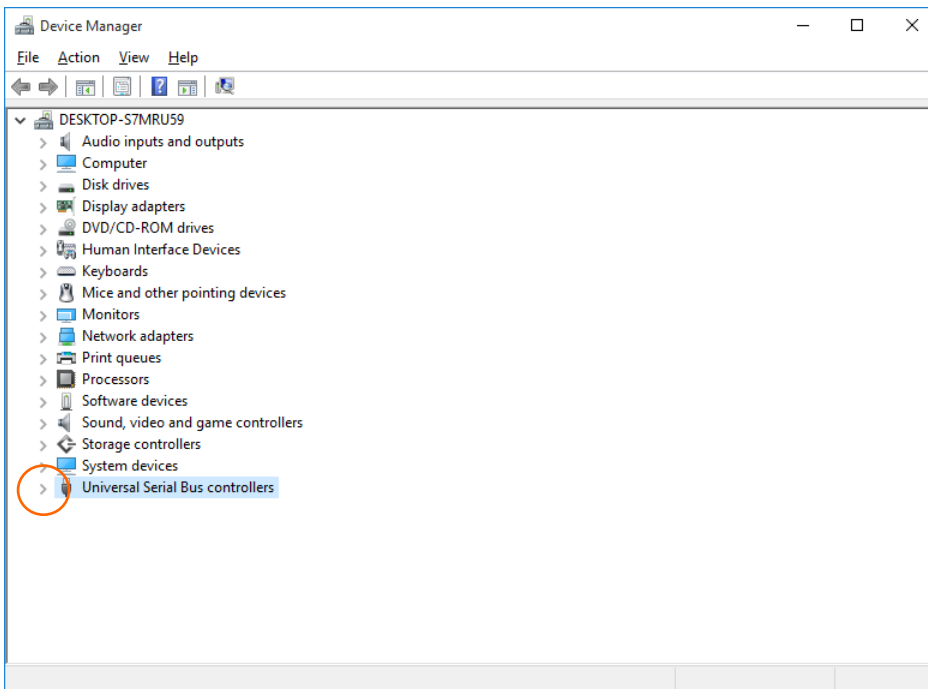
When confirming, turn on GL series or MT100 and connect it to your PC using the USB cable.

(1) Right-click on the Start menu → View Device Manager



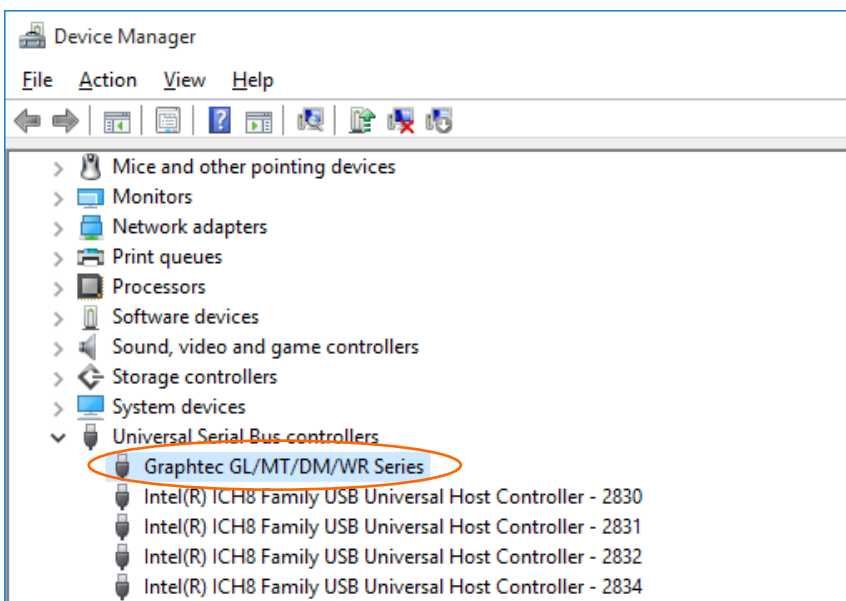
(2) User Account Control dialog may apperas. When the User Account Control dialog is displayed, press Continue button.

(3) Device Manager starts.



Click the white triangle next to the Universal Serial Bus controllers and open the tree structure.

(4) Confirm the driver is recognized correctly.



Confirm that the name of Graphtec GL/MT/DM/WR Series is registered and that there is no X or ! mark beside the name

Now the USB driver installation finishes.

## 2. In the case of Windows 8

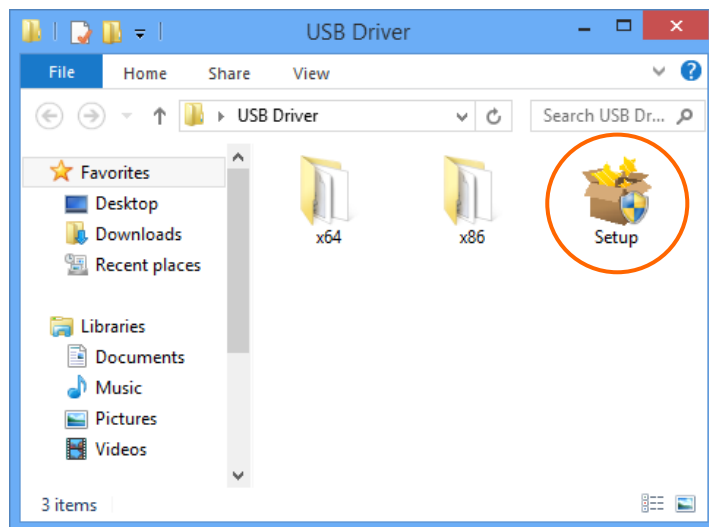
### 2-1. Preparation before Installation

- Confirm GL series or MT100 is not connected to your PC using the USB cable. If it is connected to your PC, disconnect the USB cable.
- Close all the other software.

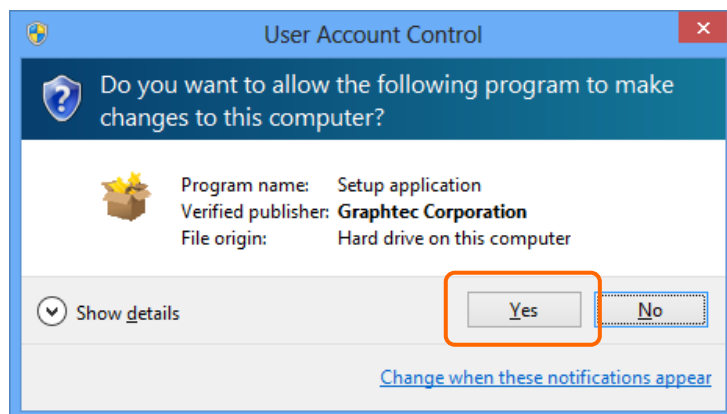
### 2-2. Installation Procedures

(1) Start D:\USB Driver\USB Driver\Setup.exe. (Double click the Setup or Setup.exe.)

Note: D: drive name of CD-ROM. The letter of CD-ROM drive vary it with the CD-ROM drive of your PC.

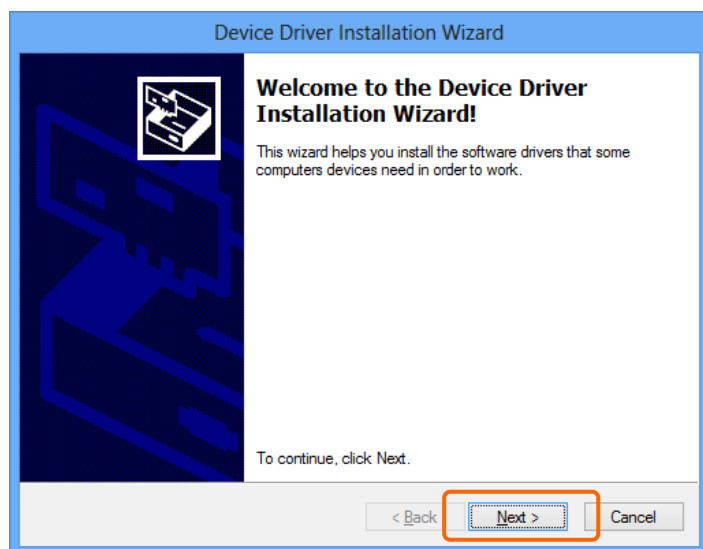


(2) User Account Control dialog may appear.



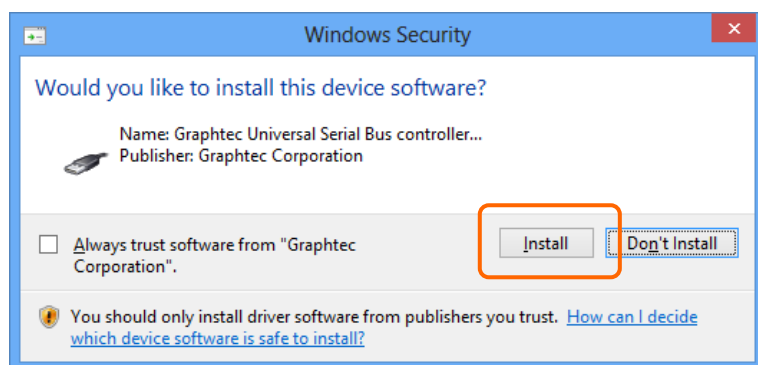
Press Yes button when the User Account Control dialog appears.

(3) Device Driver Installation Wizard starts.



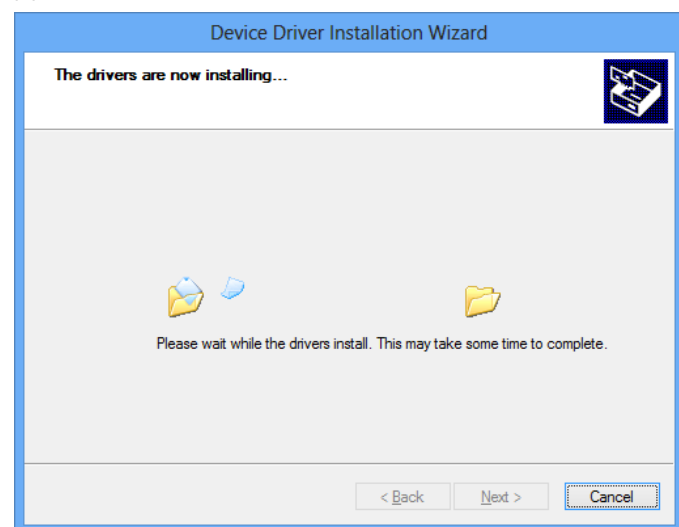
Press the Next button.

(4) Windows Security dialog may opens.



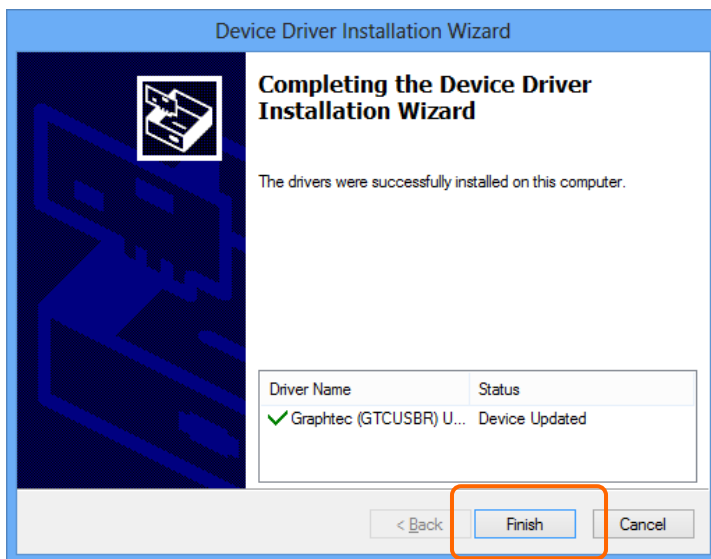
Press Install button.

(5) Please wait while wizard installs the driver software.





(6) The installation completes.



Press Finish button to exit the Setup.

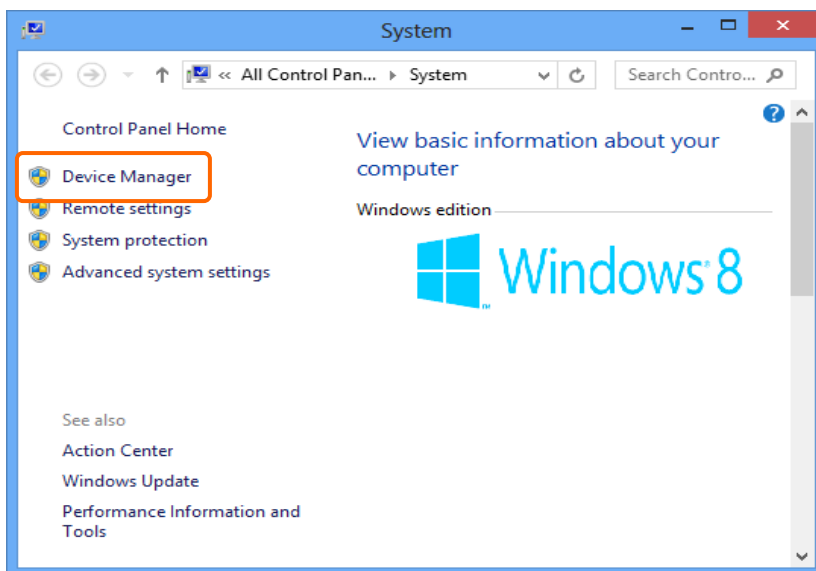
### 2-3. Device Driver Confirmation Procedures

Confirm that the USB driver is correctly installed by the procedures below.

When confirming, turn on GL series or MT100 and connect it to your PC using the USB cable.

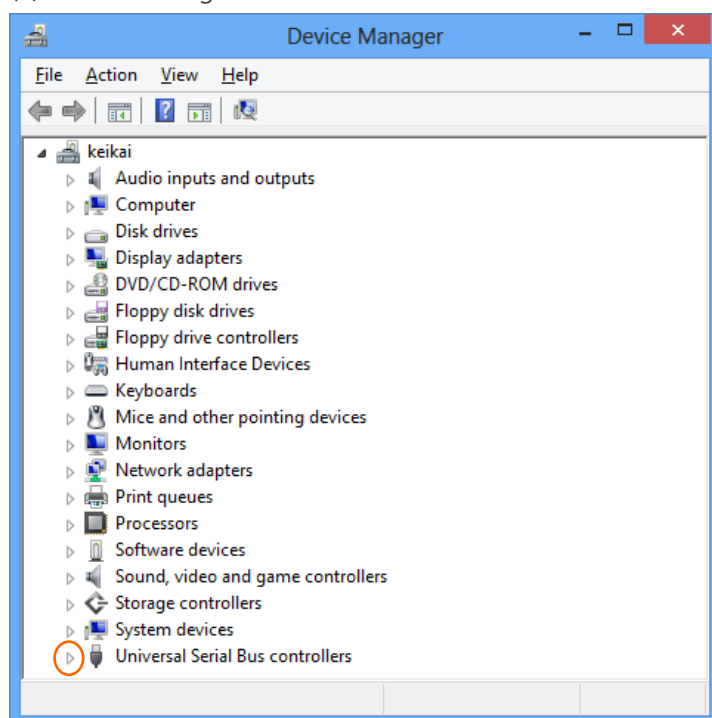
(1) Select Device Manager in the System of the System and Security on the Control pane.

(Control panel → System and Security → System → Device Manager)



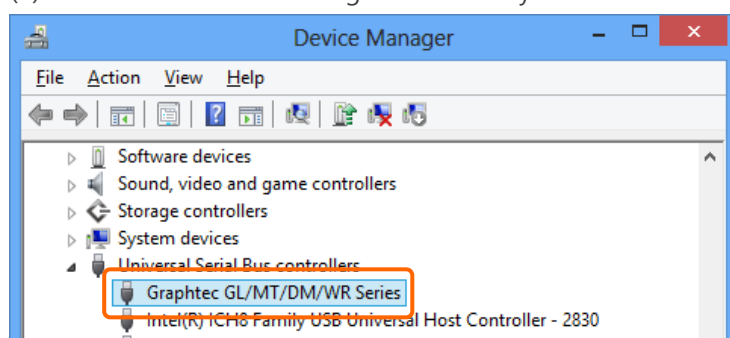
(2) User Account Control dialog may apperas. When the User Account Control dialog is displayed, press Continue button.

(3) Device Manager starts.



Click the white triangle next to the Universal Serial Bus controllers and open the tree structure.

(4) Confirm the driver is recognized correctly.



Confirm that the name of Graphtec GL/MT/DM/WR Series is registered and that there is no X or ! mark beside the name

Now the USB driver installation finishes.

## 3. In the case of Windows 7

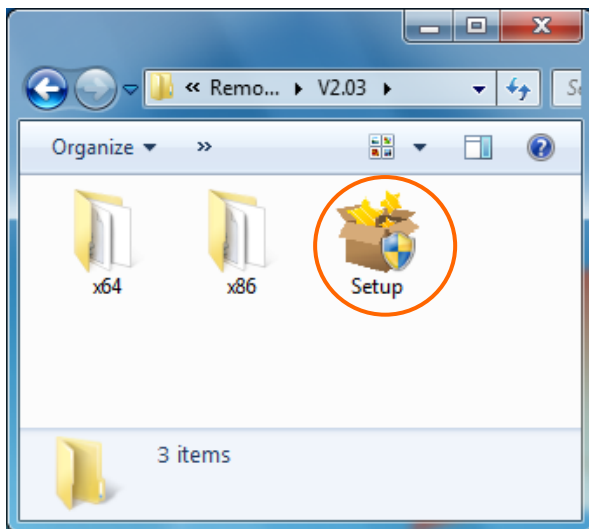
### 3-1. Preparation before Installation

- Confirm GL series or MT100 is not connected to your PC using the USB cable. If it is connected to your PC, disconnect the USB cable.
- Close all the other software.

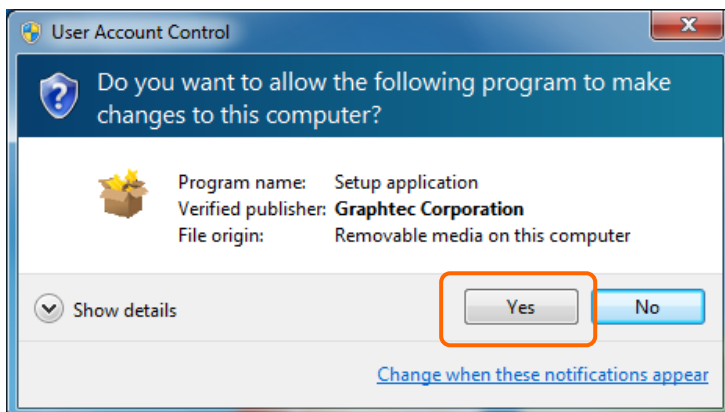
### 3-2. Installation Procedures

(1) Start D:\USB Driver\USB Driver\Setup.exe. (Double click the Setup or Setup.exe.)

Note: D: drive name of CD-ROM. The letter of CD-ROM drive vary it with the CD-ROM drive of your PC.

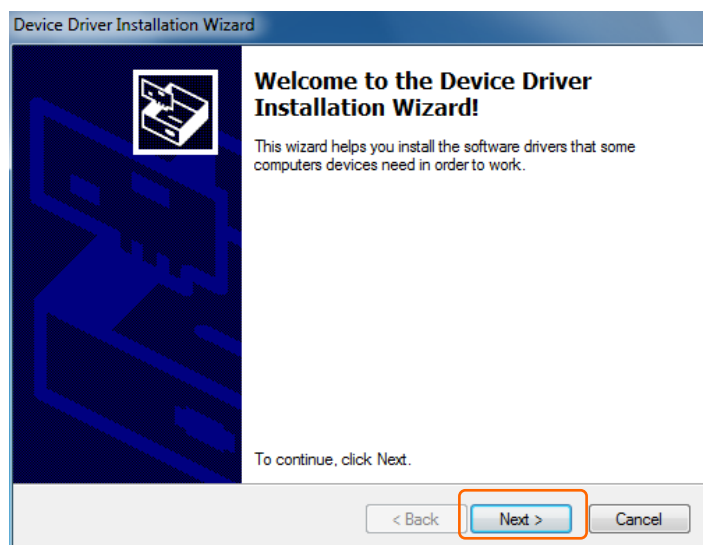


(2) User Account Control dialog may appear.



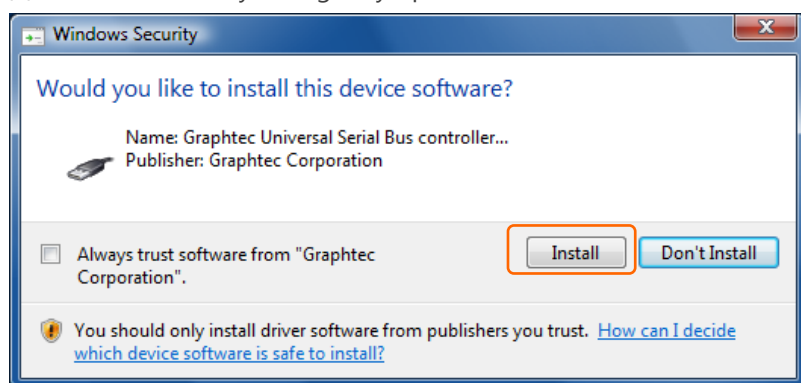
Press Yes button when the User Account Control dialog appears.

(3) Device Driver Installation Wizard starts.



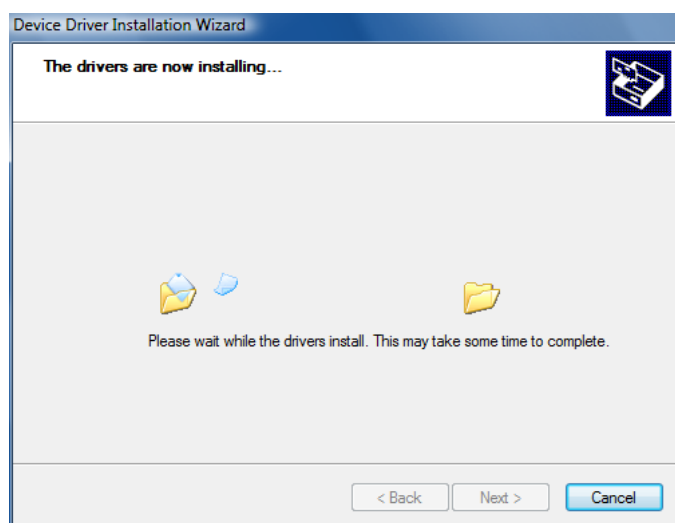
Press the Next button.

(4) Windows Security dialog may opens.

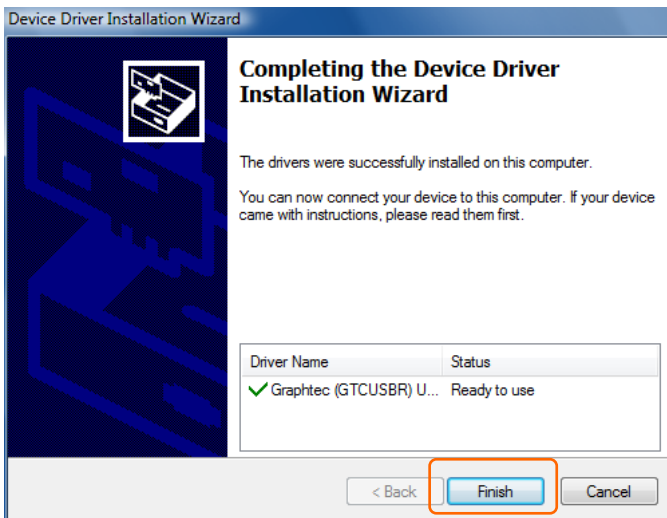


Press Install button.

(5) Please wait while wizard installs the driver software.



(6) The installation completes.

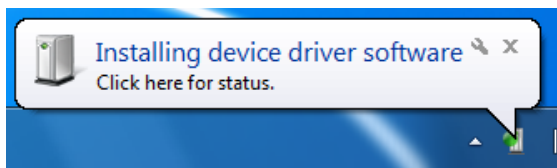


Press Finish button to exit the Setup.

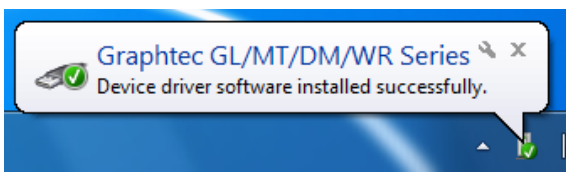
(7) Turn on the GL series or MT100 and wait for a while till the initialization of device is completed.

Connect GL series or MT100 to your PC using the USB cable. When you connect it for the first time, the balloon message "Installing device driver software" appears on the right bottom corner on the display, so please wait for a moment.

(It will never appear again after the next connection of your device to your PC.)



After a while, the balloon message shown below appears. Be sure to wait till the balloon message appears. If the balloon message does not appear after passing more than 10 min., reconnect your USB cable again.



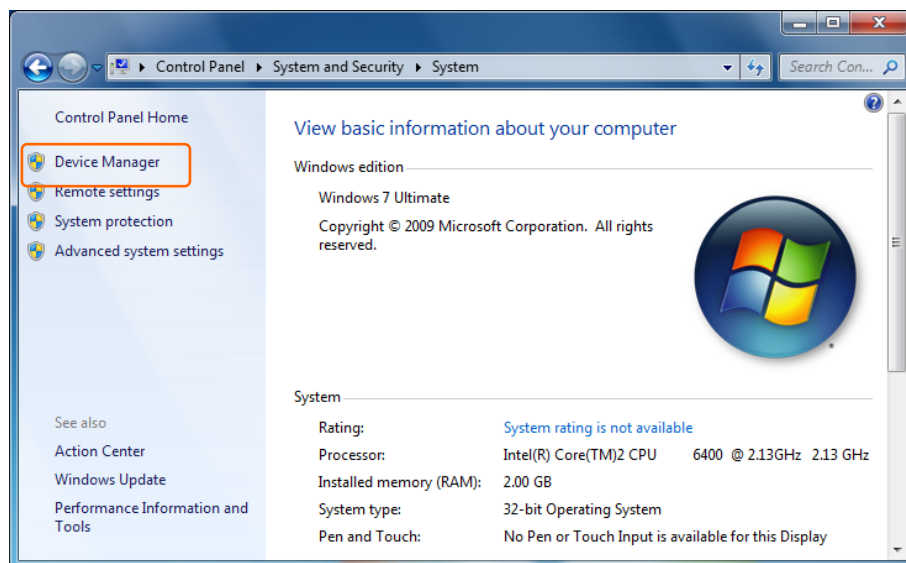
### 3-3. Device Driver Confirmation Procedures

Confirm that the USB driver is correctly installed by the procedures below.

When confirming, turn on GL series or MT100 and connect it to your PC using the USB cable.

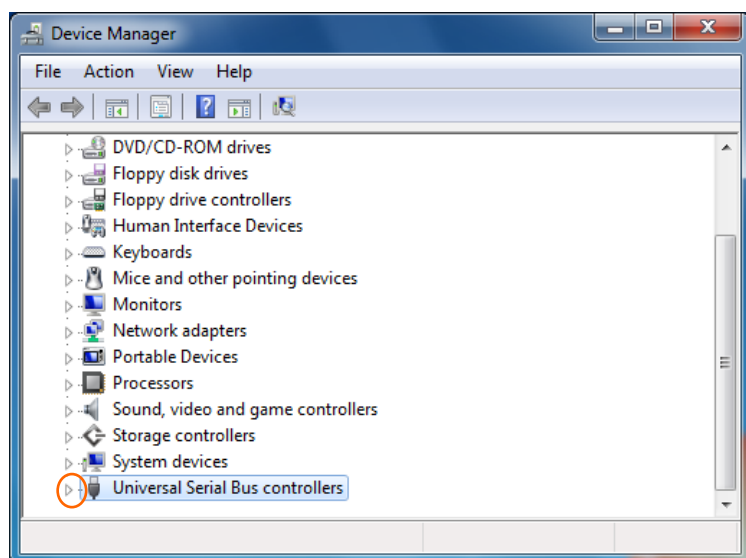
(1) Select Device Manager in the System of the System and Security on the Control pane.

(Control panel → System and Security → System → Device Manager)



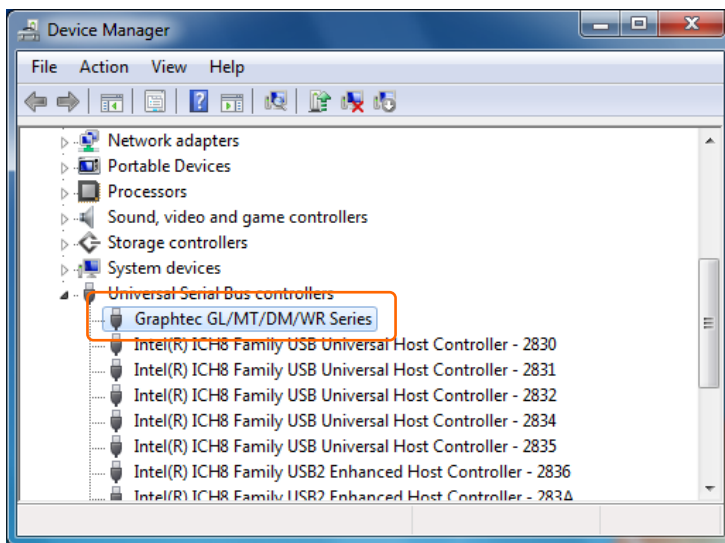
(2) User Account Control dialog may appear. When the User Account Control dialog is displayed, press Continue button.

(3) Device Manager starts.



Click the white triangle next to the Universal Serial Bus controllers and open the tree structure.

(4) Confirm the driver is recognized correctly.



Confirm that the name of Graphtec GL/MT/DM/WR Series is registered and that there is no X or ! mark beside the name

Now the USB driver installation finishes.

## 4. In the case of Windows Vista

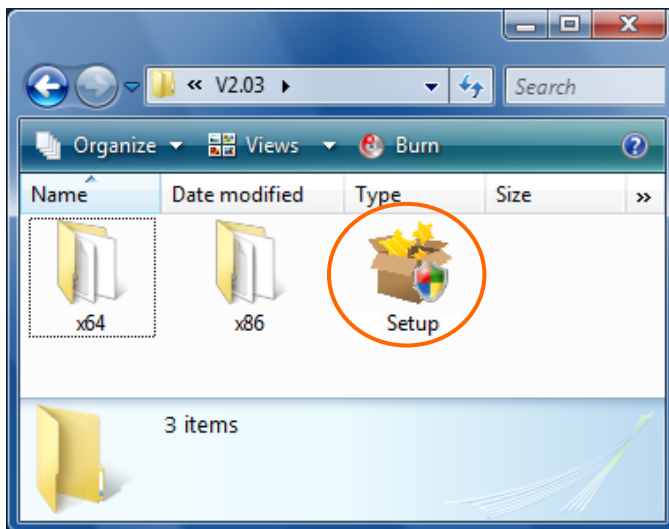
### 4-1. Preparation before Installation

- Confirm GL series or MT100 is not connected to your PC using the USB cable. If it is connected to your PC, disconnect the USB cable.
- Close all the other software.

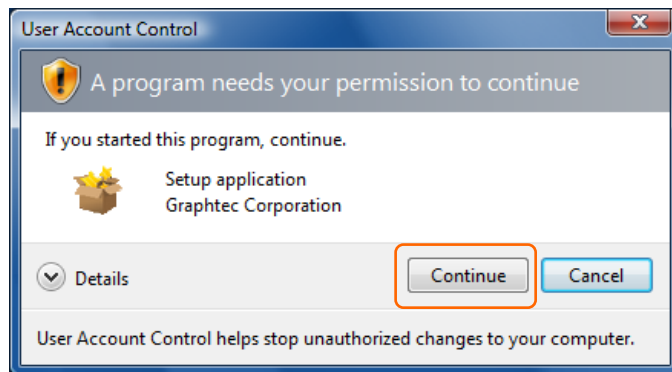
### 4-2. Installation Procedures

(1) Start D:\USB Driver\USB Driver\Setup.exe. (Double click the Setup or Setup.exe.)

Note: D: drive name of CD-ROM. The letter of CD-ROM drive vary it with the CD-ROM drive of your PC.



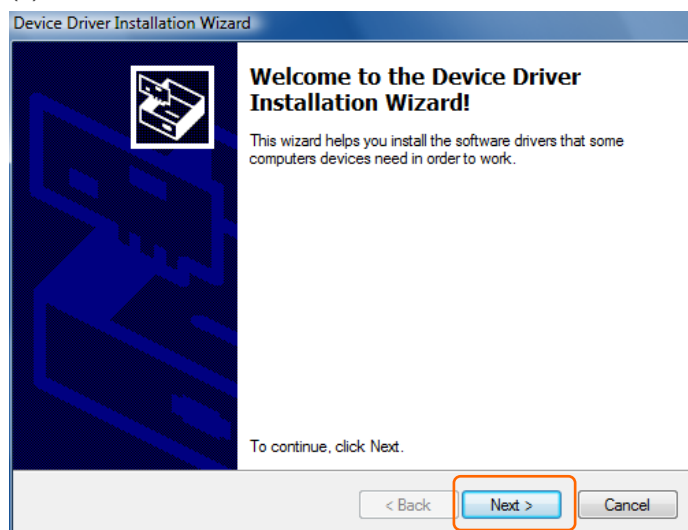
(2) User Account Control dialog may appear.



Press Yes button when the User Account Control dialog appears.

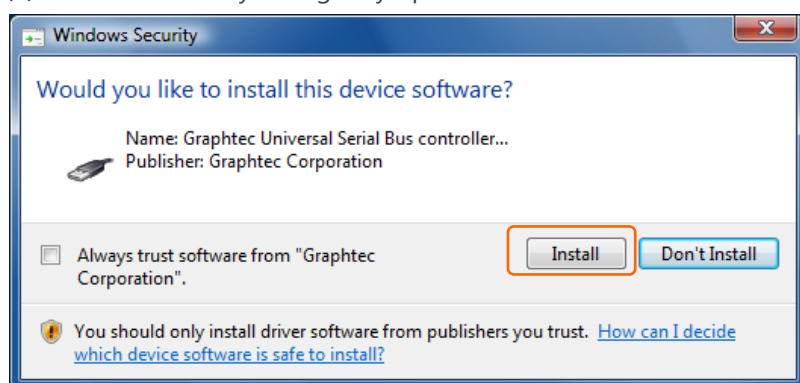


(3) Device Driver Installation Wizard starts.



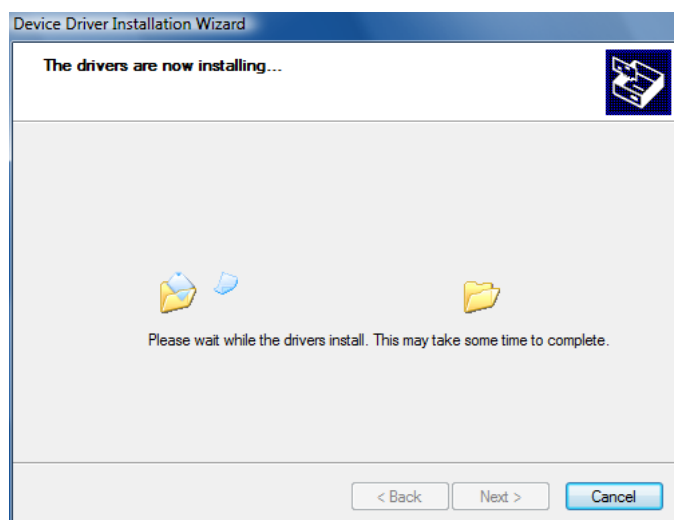
Press the Next button.

(4) Windows Security dialog may opens.

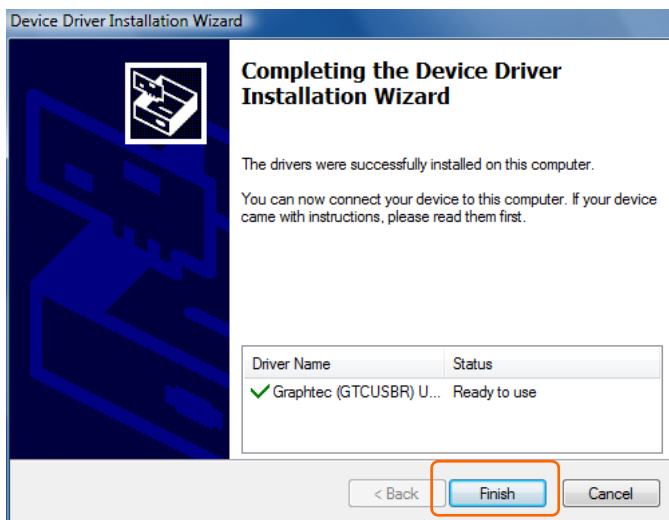


Press Install button.

(5) Please wait while wizard installs the driver software.



(6) The installation completes.



Press Finish button to exit the Setup.

(7) Turn on the GL series or MT100 and wait for a while till the initialization of device is completed.

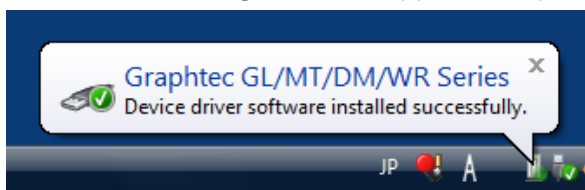
Connect GL series or MT100 to your PC using the USB cable. When you connect it for the first time, the balloon message "Installing device driver software" appears on the right bottom corner on the display, so please wait for a moment.

(It will never appear again after the next connection of your device to your PC.)



After a while, the balloon message shown below appears. Be sure to wait till the balloon message appears.

If the balloon message does not appear after passing more than 10 min., reconnect your USB cable again.



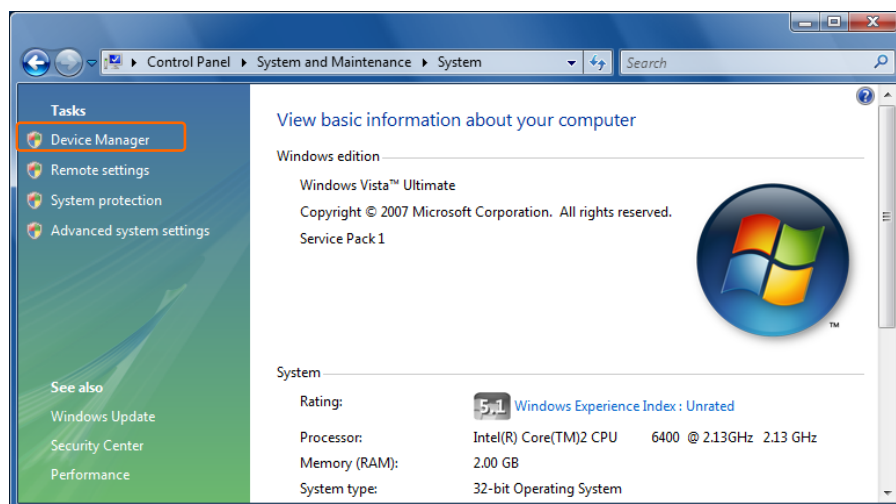
### 4-3. Device Driver Confirmation Procedures

Confirm that the USB driver is correctly installed by the procedures below.

When confirming, turn on GL series or MT100 and connect it to your PC using the USB cable.

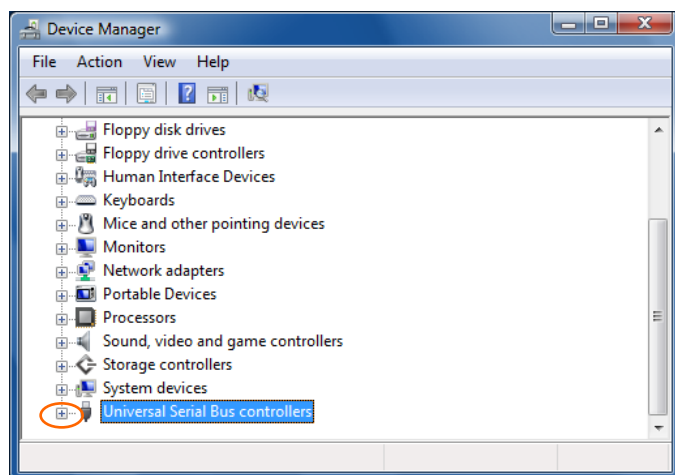
(1) Select Device Manager in the System of the System and Security on the Control pane.

(Control panel → System and Security → System → Device Manager)



(2) User Account Control dialog may apperas. When the User Account Control dialog is displayed, press Continue button.

(3) Device Manager starts.



Click the white triangle next to the Universal Serial Bus controllers and open the tree structure.

## Registered trademark information:

- Microsoft and Windows are registered trademarks of Microsoft Corporation USA in the United States and the other countries.
- The company names and product names written in this manual are registered trademarks or trademarks.



Specifications are subject to change without notice.

USB Driver Installation manual

GL-USB-UM-154

October 1, 2015 4nd edition-01

GRAPHTEC CORPORATION