

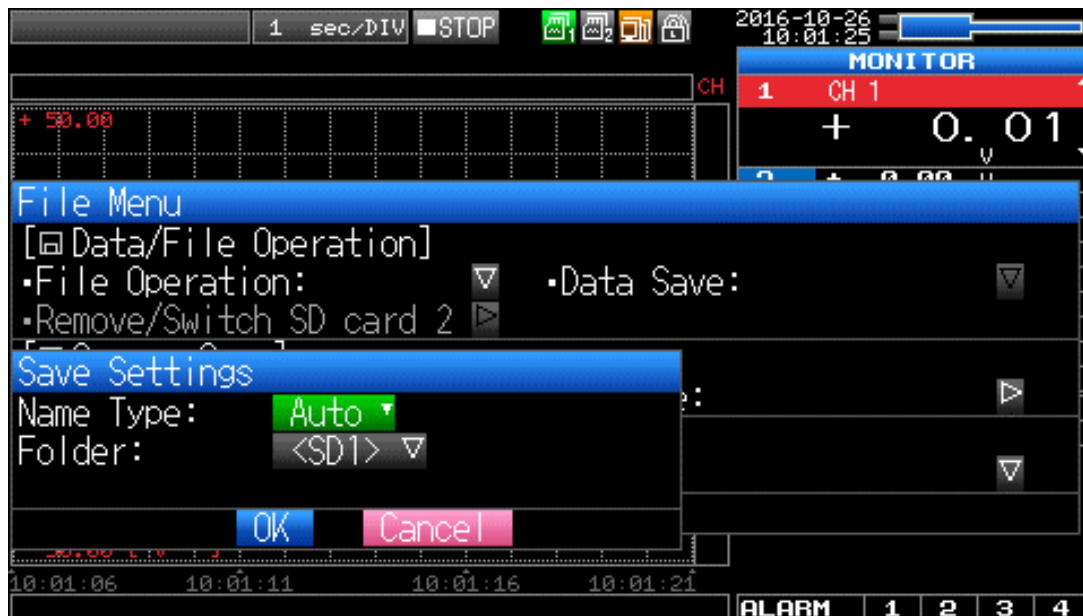
Updating the Firmware

1. Notes of the firmware update

- This manual explains the updating method of firmware on the GL240.
- This firmware is only for using to the GL240. It cannot be used in other models.
- During the update, do not turn off the power absolutely. If the power is cut off along the way, the firmware might be damaged. In this case, the GL240 may be in unrecoverable condition.
- In the upgrade, the SD card is required. The supported SD card is the SD/SDHC to 32GB, a SDXC over 64GB cannot be used.
- When updating the firmware version, the setting conditions will be initialized. It is recommended for saving the setting conditions to a file in advance. For instructions on how to save it, refer to the section of "2. Updating firmware".
- The settings in I/F menu (IP address, etc.) might be changed by the firmware updating. It is recommended to save the setting conditions by write down on paper in advance for re-set it in the menu after firmware is updated.

2. Updating firmware

1. Open the "File Menu" by pressing "FILE/GROUP" key.
2. Select "Save" in "Save/Load current settings". The following screen is displayed.



* The settings in I/F menu (IP address, etc.) is not saved in a file. It is recommended to save the setting conditions by write down on paper.

3. Set "Name Type" and "Folder", and then select "OK".

- Name Type

Automatic: File that has name of the date and time is created.

Optional: File that has assigned any name is created.

Serial number: File that has the serialized number with assigned any name is created.

- Folder

< SD1 >: SD CARD 1, saving in the SD card 1. In some models, it is not replaceable.

< SD2 >: SD CARD 2, saving in the SD card 2.

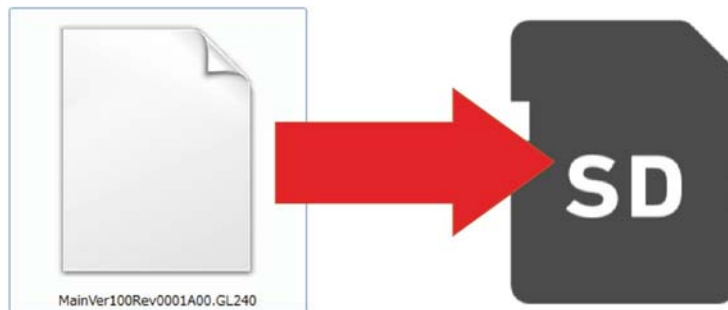
4. Prepare the file. The file of firmware updating is the following.

File name: MainVerxxxRevyyyyAzz.GL240

Version information is shown below.

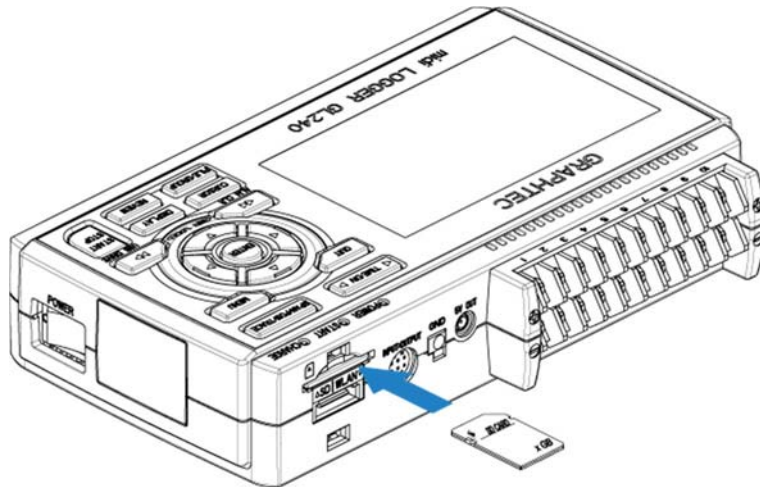
- xxx: Version information
(Ex.) "110" indicates "V1.10".
- yyyy: Revision Information
(Ex.) "0001" indicates "Rev0001".
- zz: Special item number
(Ex.) "00" indicates "standard product".

5. Insert the SD card used for updating into the PC and copy the firmware update file to the root folder in the SD card. (Root folder refers to the top folder of the directory.)

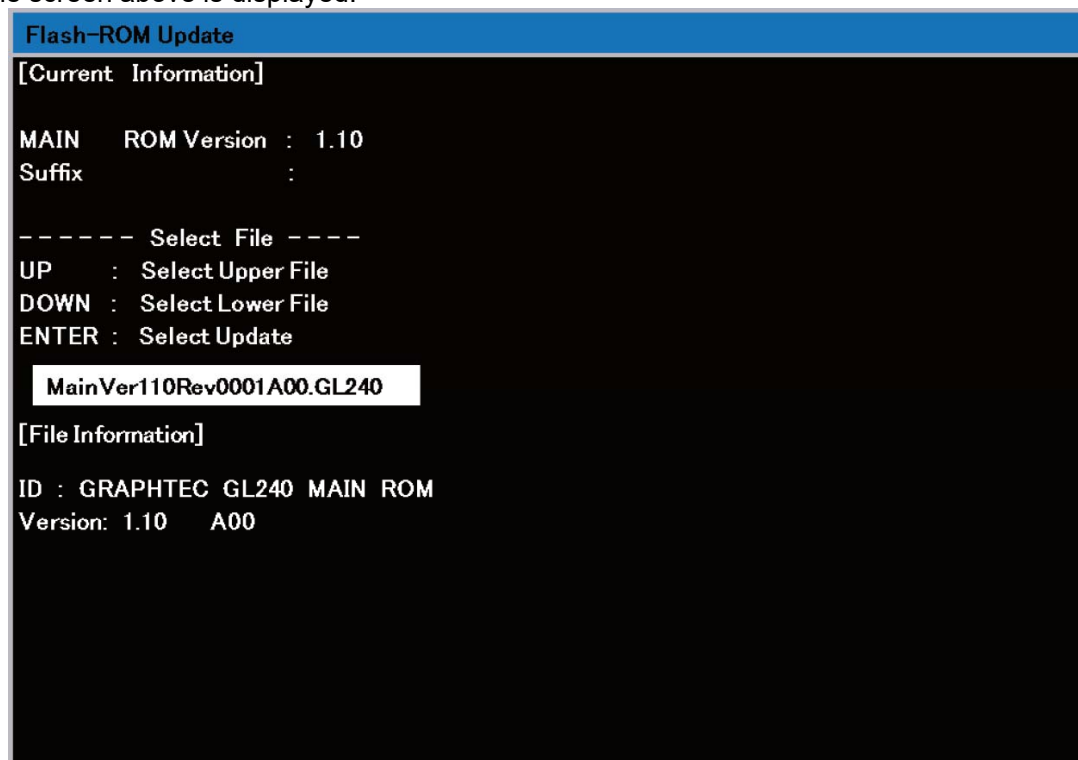


File: MainVer110Rev0001A00.GL240

6. During GL240 power is off, insert the SD card including the firmware update file to SD2 on the GL240.



7. Turn on the power of GL240.
The screen above is displayed.



Select the file by using "UP" or "DOWN" arrow key, the press "ENTER" key. Firmware update is started. Wait until it is finished.
When it is finished, a message is displayed and the beeper sounds.

Should not turn off the power until firmware update process is finished.

8. "Please turn off power. --- I have locked up" message is displayed with yellow characters. Also the beeper will sound for 5 seconds. Then turn off the power.

Do not turn off the power until the firmware update is completed.

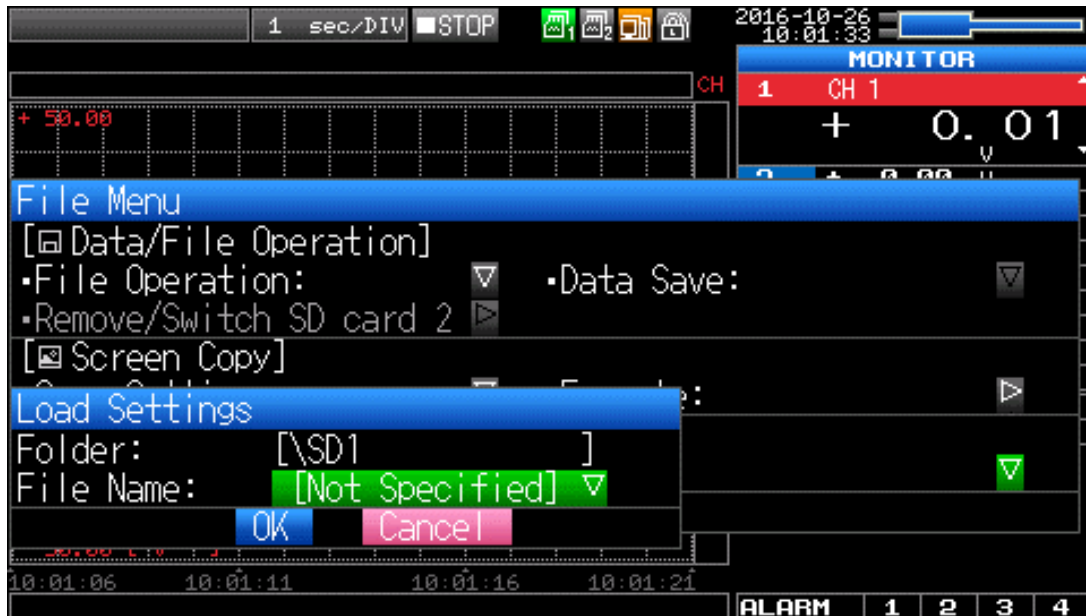
```
Flash-ROM Update
----- Select File -----
UP      : Select Upper File
DOWN    : Select Lower File
ENTER   : Start Update

MainVer110Rev0001A00.GL240
[File Information]
ID : GRAPHTEC GL240 MAIN ROM
Version: 1.10  A00

Reading ROM Data ....
5500KB Complete.
Start ROM Update Sequence.
--- Erase ---
100% Complete.
--- Write ---
100% Complete.
ROM Update ALL Complete! !

Please Turn Off Power. --- I have locked up.
```

9. Remove the SD card, and then turn on the power.
10. Open the "File Menu" by pressing "FILE/GROUP" key.
11. Select "Load" in "Save/Load current settings". The following is displayed.
Select the setting conditions file saved in Step 3, and then select "OK" for applying the settings.



* Confirm the settings of I/F menu. if the settings have been changed, set it again.

12. Delete the firmware update file saved in the SD card.

GL240 firmware update is completed.